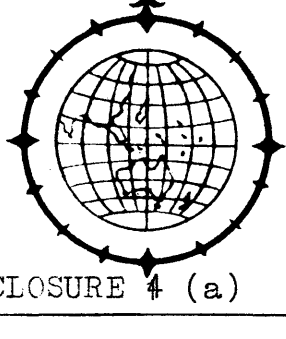


# OIL DRILLING & EXPLORATION LTD.

## Electric Well Log



ENCLOSURE 4 (a)

ENCLOSURE 4 (a)

CUSTOMER A. P. M. DEVELOPMENT PTY. LTD. WELL NO. ROSEDALE NO. 1

LOCATION ROSEDALE STATE VICTORIA COUNTRY AUSTRALIA

ELEVATIONS Ground Level: \_\_\_\_\_ Derrick Floor: \_\_\_\_\_ Kelly Bush: \_\_\_\_\_

HOLE DEPTH Drillers 5836 ft. Electric Log: 5837.5 ft. Depth Datum: Table

HOLE SIZE 8 3/4 ins. CASING Size: 9-5/8 ins. Depth: 2476 ft.

TYPE OF MUD BENTONITE  
 Viscosity: 49 Resistivity: 93 ohms @ 60° F.  
 Density: 73 Water Loss: 6.4  
 ph 9 Comments: \_\_\_\_\_

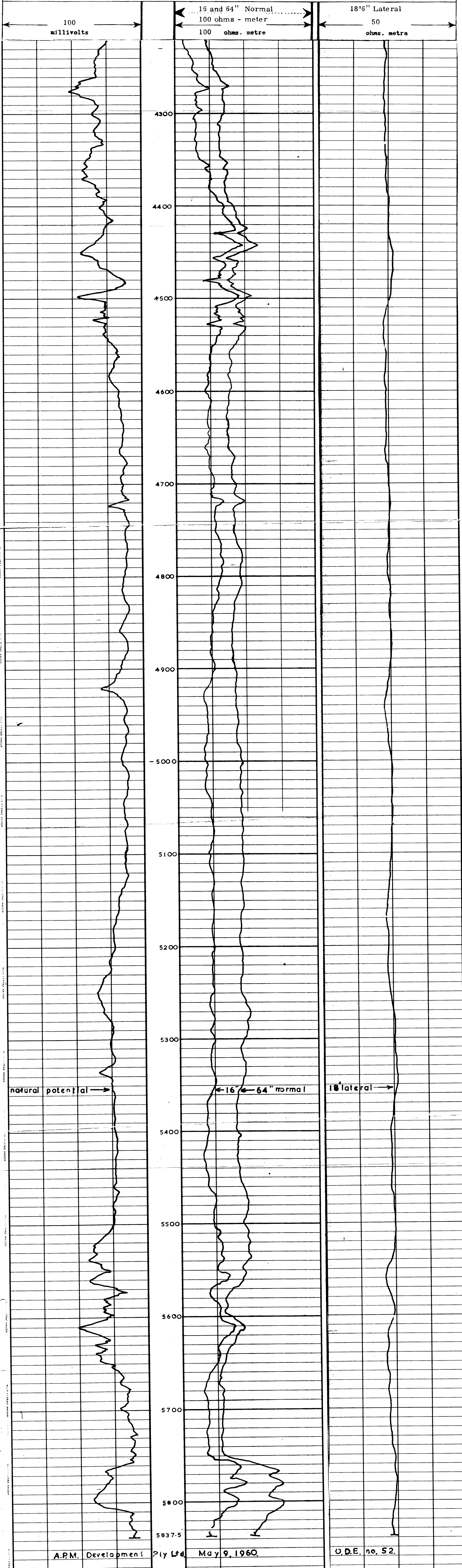
LOGGED BY J. G. ANTLIFF WITNESSED BY J. SMITH

O.D.E. NO. 52 DATE MAY 9, 1960.

NATURAL POTENTIAL

RESISTIVITY

RESISTIVITY



A.P.M. Development Pty Ltd

May 9, 1960.

O.D.E. no. 52.