

COMPENSATED SONIC  
1:500

COMPANY LAKES OIL N.L.	FIELD PETRO-TECH # 1	PROVINCE/COUNTY VICTORIA	PERMIT NUMBER PEP 1355
LOCATION CIPPSLAND BASIN	WELL PETRO-TECH # 1	APPROVALS	OTHER SERVICES
DATE 07-MAR-97	DEPTH-DRILLER ONE	DEPTH-LOGGERS 431.4 M	DEPTH-LOGGING 59.67 M
LOCATION CIPPSLAND BASIN	WELL PETRO-TECH # 1	PROVINCE/COUNTY VICTORIA	PERMIT NUMBER PEP 1355
DATE 07-MAR-97	DEPTH-DRILLER ONE	DEPTH-LOGGERS 431.4 M	DEPTH-LOGGING 59.67 M
LOCATION CIPPSLAND BASIN	WELL PETRO-TECH # 1	PROVINCE/COUNTY VICTORIA	PERMIT NUMBER PEP 1355
DATE 07-MAR-97	DEPTH-DRILLER ONE	DEPTH-LOGGERS 431.4 M	DEPTH-LOGGING 59.67 M

BOREHOLE RECORD		CASING RECORD			
RUN NUMBER	BIT FROM TO	SIZE	WEIGHT	FROM	TO
ONE	156 MM 431.4 M	340 MM	48 LB/FT	59.67 M	SURFACE

EQUIPMENT	RUN 1	RUN 2	RUN 3	RUN 4
DLS	13.27.00			
PNS		99		
CSS			013.021	
RFS				017

REMARKS

SNIC RUN WITH 0.5" STANDOFFS

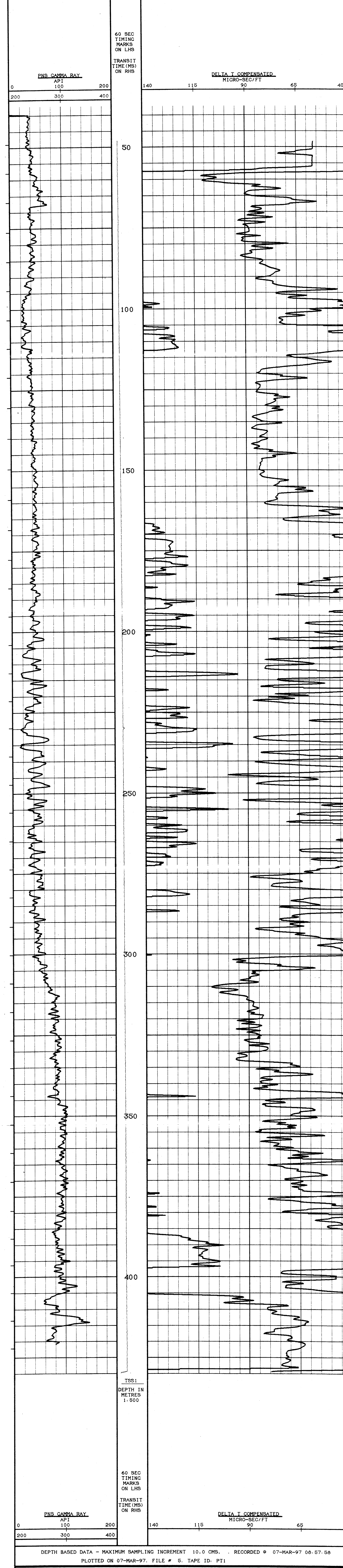
RIG: HENRY BROS. BOURNE 2000R

SYSTEM CONFIGURATION DATES: LOGGED 02.SEP.96 PROCESSED PLOTTED 02.SEP.96

ALL INTERPRETATIONS ARE OPINIONS BASED ON INFERENCE FROM ELECTRICAL OR OTHER MEASUREMENTS AND WE CANNOT AND DO NOT GUARANTEE THE ACCURACY OR CORRECTNESS OF ANY INTERPRETATIONS AND WE SHALL NOT BE LIABLE OR RESPONSIBLE FOR ANY LOSS, COSTS, DAMAGES OR EXPENSES INCURRED OR SUSTAINED BY ANYONE RESULTING FROM ANY INTERPRETATION MADE BY ANY OF OUR OFFICERS, AGENTS OR EMPLOYEES. THESE INTERPRETATIONS ARE ALSO SUBJECT TO OUR GENERAL TERMS AND CONDITIONS AS SET OUT IN OUR CURRENT PRICE SCHEDULE.

MAIN LOG

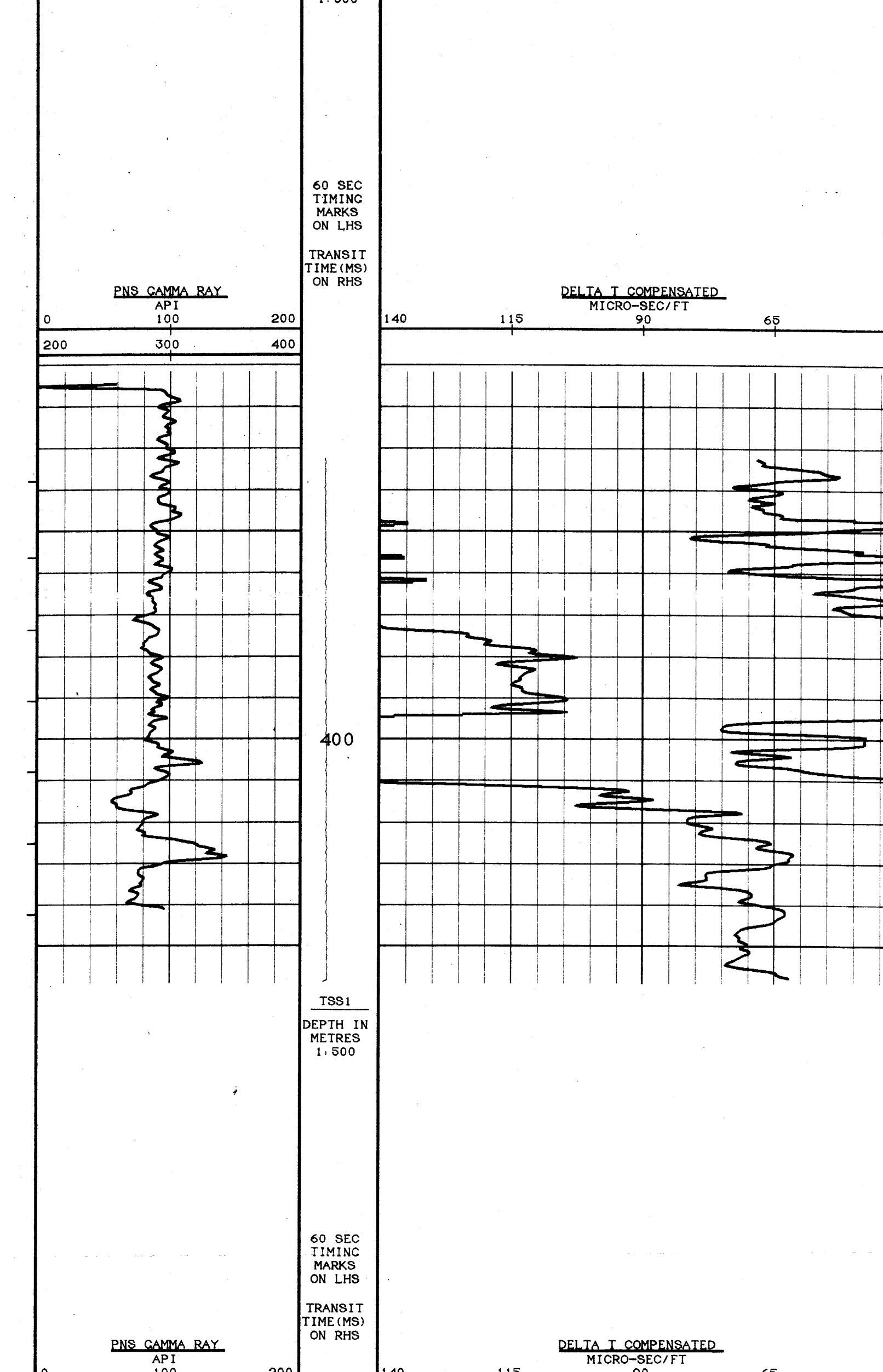
DEPTH BASED DATA - MAXIMUM SAMPLING INCREMENT 10.0 CMS. . . RECORDED @ 07-MAR-97 09.42.55  
PLOTTED ON 07-MAR-97. FILE # 5. TAPE ID. PT1



DEPTH BASED DATA - MAXIMUM SAMPLING INCREMENT 10.0 CMS. . . RECORDED @ 07-MAR-97 08.57.58  
PLOTTED ON 07-MAR-97. FILE # 5. TAPE ID. PT1

REPEAT SECTION

DEPTH BASED DATA - MAXIMUM SAMPLING INCREMENT 10.0 CMS. . . RECORDED @ 07-MAR-97 09.42.55  
PLOTTED ON 07-MAR-97. FILE # 4. TAPE ID. PT1



DEPTH BASED DATA - MAXIMUM SAMPLING INCREMENT 10.0 CMS. . . RECORDED @ 07-MAR-97 08.43.42  
PLOTTED ON 07-MAR-97. FILE # 4. TAPE ID. PT1

COMPANY	LAKES OIL N.L.
WELL	PETRO-TECH # 1
FIELD	APPRAISAL
PROVINCE/COUNTY	VICTORIA
COUNTRY/STATE	AUSTRALIA