

Schlumberger
PERTH
COMPUTING
CENTRE



GEOGRAM*

(Synthetic Seismogram)

A Part of Schlumberger

Company: AMPOL EXPLORATION LIMITED
Well: FAIRHOPE #1
Field: WILDCAT
Country: AUSTRALIA
Reference No: F40382
Date Logged: 28/08/85
Date Processed: 16/08/85
Location: 037 54' 49" S
Elevations: KR 429 M DE 423 M GL: 390 M
Permanent Datum: NSL
Depth Units: METRES

LOG INFORMATION

FIELD RECORDING: Engineer: J.A. ELIAS Location: GFA Program Version: 2d & 6d/02/85
COMPUTATION: Analyst: R. BLUNT Course: ASJ Baseline: 13.4
ELEVATION ABOVE MEAN SEA LEVEL: 429 M
Sonic Reference Datum: NSL
Ground Level: 390 M
Sonic Calibration by Check Shots: YES Sonic Edited by Analyst: YES

Two-Way Time Sample Interval: 2 ms Environment: onshore

True Vertical Depth Corrections Applied: NO
Source of True Vertical Depth Data: Maximum Hole Deviation:

Run	Date	Tool	RI SHV	Casing SHV	Top	Bottom
			8 1/2" @ 668 M	8 8/8" @ 128 M	1283 M	6610 M
1	28/08/85	SHC	8 1/2" @ 668 M	8 8/8" @ 128 M	1283 M	6610 M
1	28/08/85	LOT	8 1/2" @ 668 M	8 8/8" @ 128 M	1283 M	6610 M

GEOGRAM MODEL ASSUMPTIONS

Equal time slice model of horizontal plane layers.
Plane acoustic waves at normal incidence.
No intrinsic attenuation.

POLARITY

An upgoing wave, reflected by an increase in acoustic impedance with depth, is displayed as a white trough under normal polarity.

SIGNATURES

All signatures displayed in the Geogram results correspond to a wavelet convolved with a reflection coefficient of -0.5 (a decrease in acoustic impedance with depth).

REFERENCES

Sonic log interval 127.5 - 561 metres below KB
Density log interval 127.5 - 561 metres below KB
Time Scale = 10 m/sec

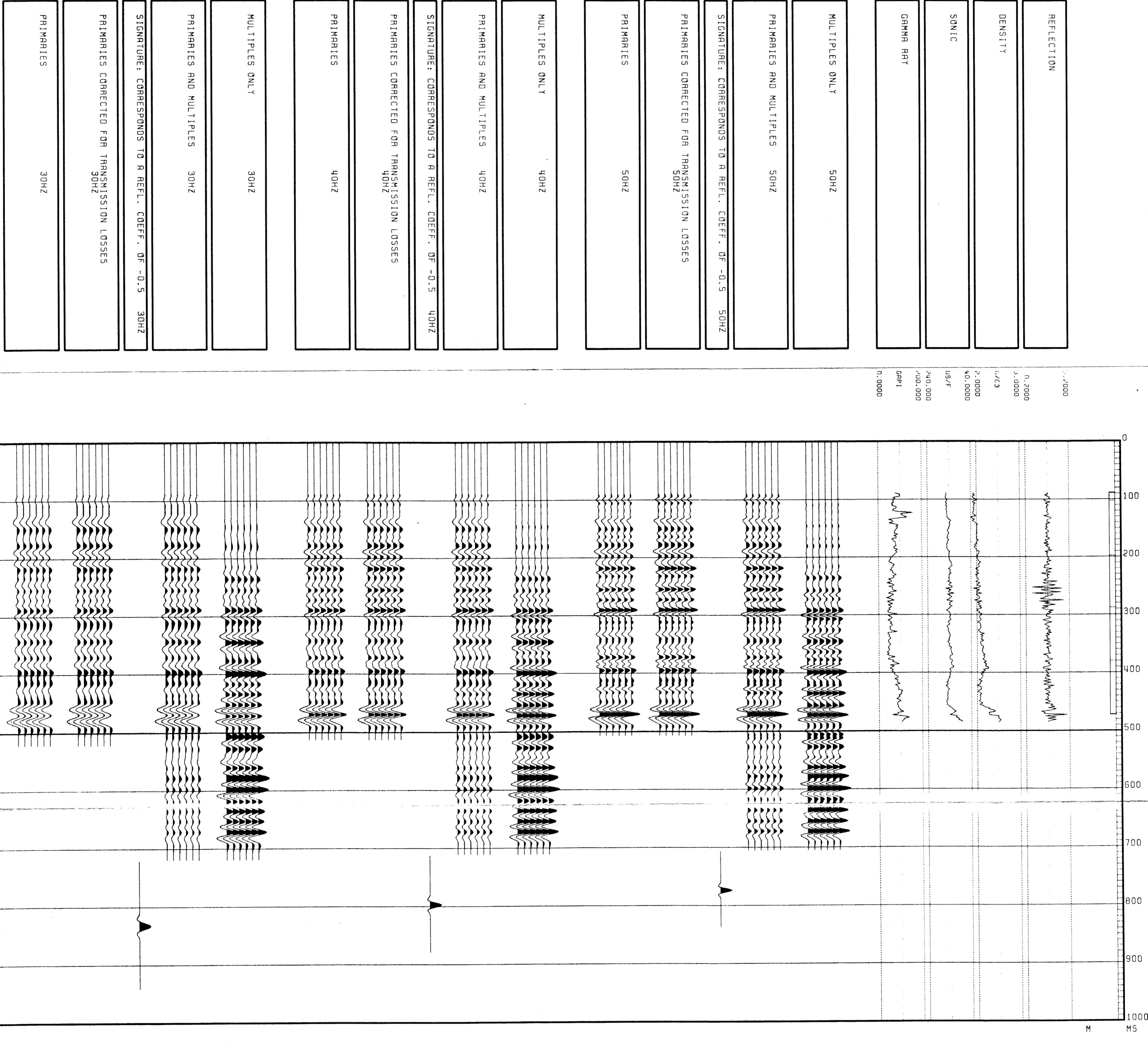
The well name, location and borehole reference data were furnished by the customer.
All interpretations are opinions based on inferences from electrical or other measurements and we cannot, and do not, guarantee the accuracy or correctness of any interpretations, and we shall not, except in the case of gross or willful negligence on our part, be liable or responsible for any loss, costs, damages or expenses incurred or sustained by anyone resulting from any interpretations made by any of our officers, agents or employees. These interpretations are also subject to Clause 4 of our General Terms and Conditions as set out in our current Price Schedule.

CLIENT : AMPOL EXPLORATION LIMITED
FIELD : WILDCAT
WELL : FAIRHOPE #1

SREF.GEO.001* SPM.GEO.001* SKUL.GEO.001* SMUD.GEO.001* SREF.GEO.002* SPM.GEO.002* SKUL.GEO.002* SMUD.GEO.002* SREF.GEO.003* SPM.GEO.003* SKUL.GEO.003* SMUD.GEO.003* GR* DTTM* RHOT* REFL*

GEOGRAM AFTER SONIC CALIBRATION RICKER WAVELETS ZERO PHASE NORMAL POLARITY

FAIRHOPE #1

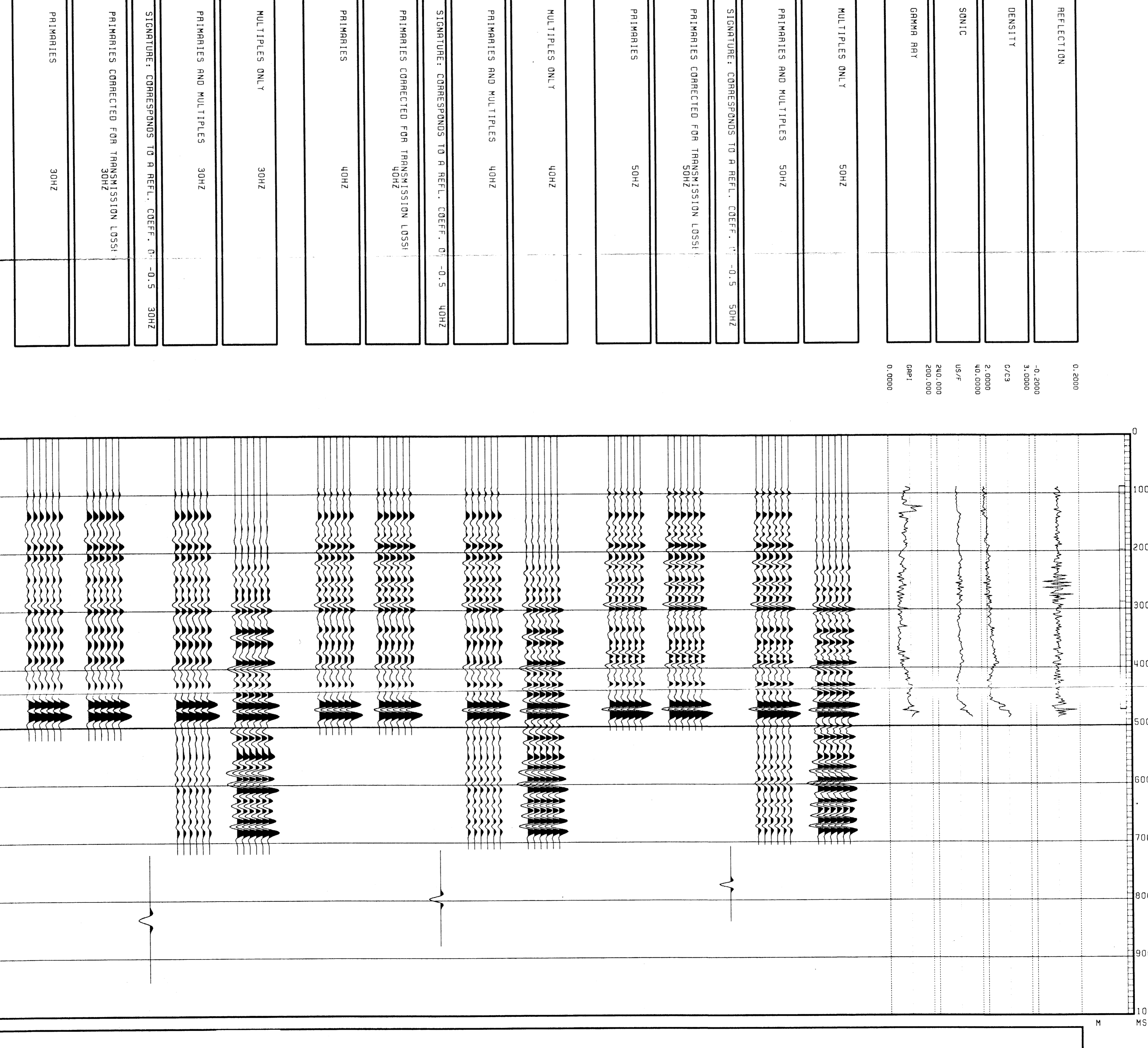


CLIENT : AMPOL EXPLORATION LIMITED
FIELD : WILDCAT
WELL : FAIRHOPE #1

SREF.GEO.001* SPM.GEO.001* SKUL.GEO.001* SMUD.GEO.001* SREF.GEO.002* SPM.GEO.002* SKUL.GEO.002* SMUD.GEO.002* SREF.GEO.003* SPM.GEO.003* SKUL.GEO.003* SMUD.GEO.003* GR* DTTM* RHOT* REFL*

GEOGRAM AFTER SONIC CALIBRATION RICKER WAVELETS ZERO PHASE REVERSE POLARITY

FAIRHOPE #1



COMPANY AMPOL EXPLORATION LIMITED
FIELD WILDCAT
WELL FAIRHOPE #1
COUNTRY AUSTRALIA

