

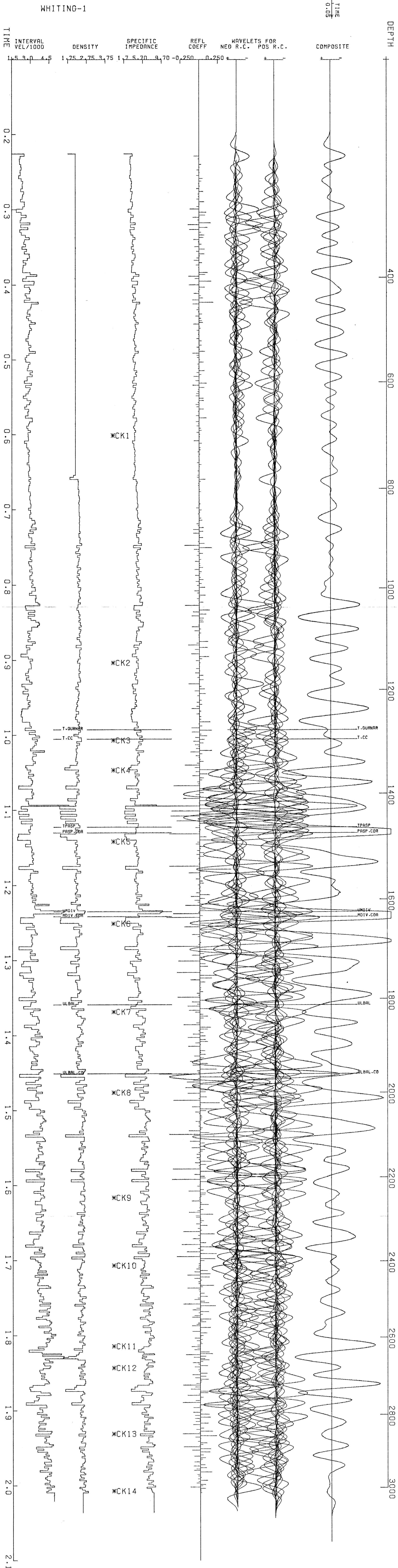
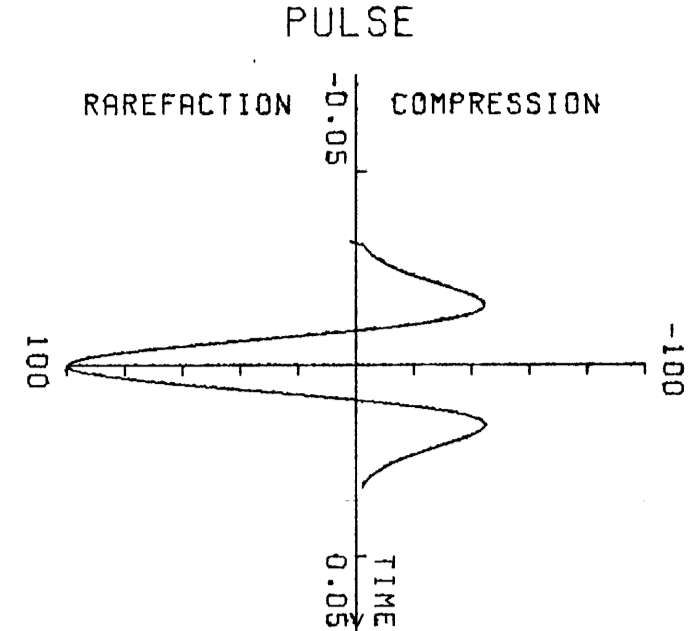
ESSO AUSTRALIA LIMITED
 WHIT1.GP
 FOR REX
 STARTING BLOCK NUMBER 1
 ENDING BLOCK NUMBER 999
 PEN NUMBER 1
 SCALE FACTOR 1.000
 PLOT PRIORITY 1
 PULSE NO 1 TYPE=2 FREQ=25.00 CYCLE BREADTH=31.19

WHITING-1 W.C.R. Vol 2.
SYNTHETIC SEISMOGRAM

DETAILED PLOT

LINEAR TIME PLOT UNITS=METRIC FEB. 10, 1984 10:51 AM

LOG DATUM ELEV. = 21 (DEPTH REF.)
 AREA DATUM ELEV. = 0
 CHECK SHOT DATUM ELEV.= 0
 VELOCITY FROM CHECK SHOT TO AREA DATUM = 300



WHITING-1

PULSE NO 1 TYPE=2 FREQ=25.00 CYCLE BREADTH=31.19

TIME OVERLAY

FEB. 10, 1984 10:53 AM

