

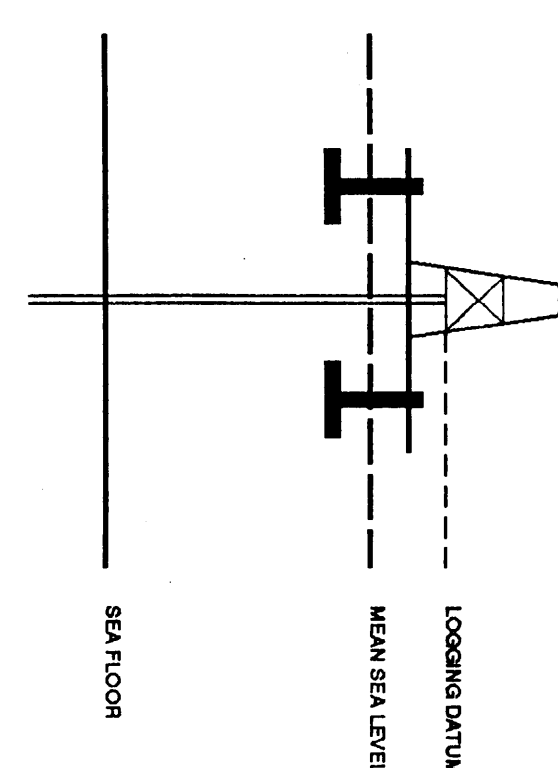
SEISMIC CALIBRATION LOG

(Adjusted Continuous Velocity Log)



Company: ESSO AUSTRALIA LTD
Well: WHALESARK 1
Field: WILDCAT
Country: AUSTRALIA
Reference No.: 560821
Interval: 2847.00 to 1492.00
Date Logged: 17-08-92
Date Processed: 27-8-92
Location: 38 23 45.8" S
Elevation: KB: 22.00 DF: 21.70 GL: -716.9989
Permanent Datum: MSL
Depth Units: METRES
FIELD RECORDS: Engineer: RUMWIRA Location: Program Version: 32.4
COMPUTATION: Analyst: T. BOWMAN Centre: SYD Baseline: 20.0
ELEVATION ABOVE MEAN SEA LEVEL

Logging Datum: 22.00
Seismic Reference Datum: 0.00



Total Number of Levels: 17

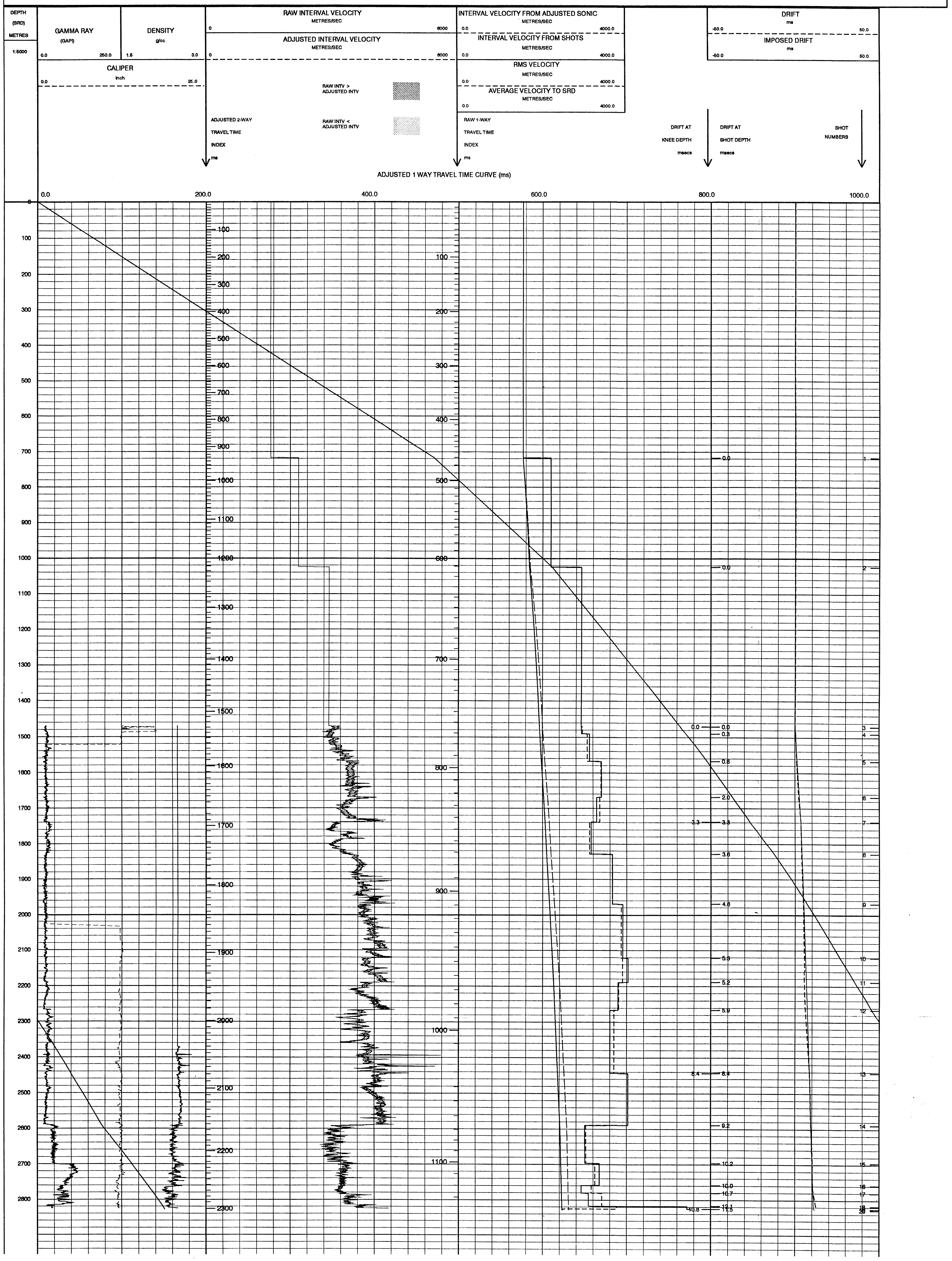
Depth Reference	SRD
17-08-92	SRD

Run	Date	Tool Type	Bit Size	Depth	Casing Size	Top Depth	Bottom Depth
1	17-08-92	SPT				2847 M	773 M
2	18-08-92						

FOLD HERE

The well name, location and borehole reference data were furnished by the customer.

All interpretations are opinions based on inferences from electrical or other measurements and we cannot, and do not guarantee the accuracy or correctness of any interpretations, and we shall not, except in the case of gross or willful negligence on our part, be liable or responsible for any loss, costs, damages or expenses incurred or sustained by anyone resulting from any interpretations made by any of our officers, agents or employees. These interpretations are also subject to Clause 4 of our General Terms and Conditions as set out in our current Price Schedule.



COMPANY ESSO AUSTRALIA LTD
FIELD WILDCAT
WELL WHALESARK 1
COUNTRY AUSTRALIA

