

Schlumberger

MELBOURNE LOG
INTERPRETATION
CENTRE



SEISMIC CALIBRATION LOG

(Adjusted Continuous Velocity Log)

Company: ESSO AUSTRALIA LTD

Well: TURRUM 4

Field: OUTPOST

Country: AUSTRALIA

Reference No: 590827

Date Logged: 10-09-92

Location: 38 27' 8" S 148 29' 2" E

Elevations: KB: 23.00 DF: 22.70 Q.L: -63.00

Permanent Datum: MSL

Depth Units: METRES

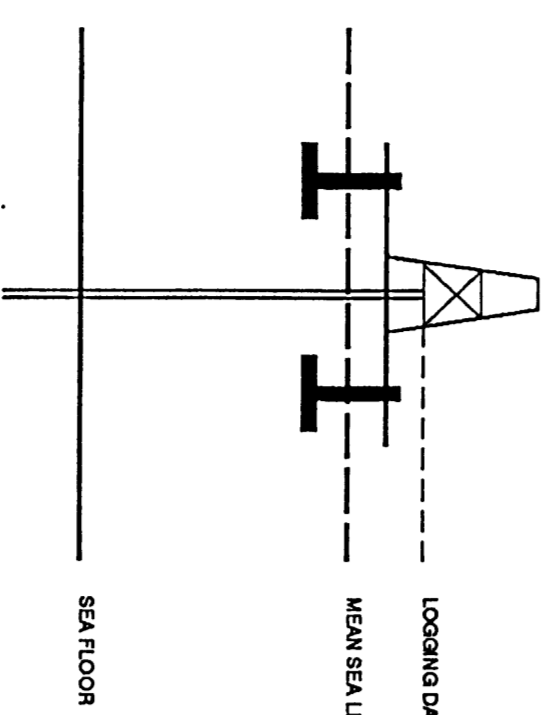
FIELD RECORDING: Engineer: M. HILLING

COMPUTATION: Analyst: T. BOWMAN

Logging Datum: 23.00

Seismic Reference Datum: 0.00

ELEVATION ABOVE MEAN SEA LEVEL



Total Number of Levels: 21

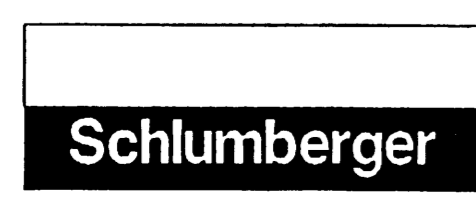
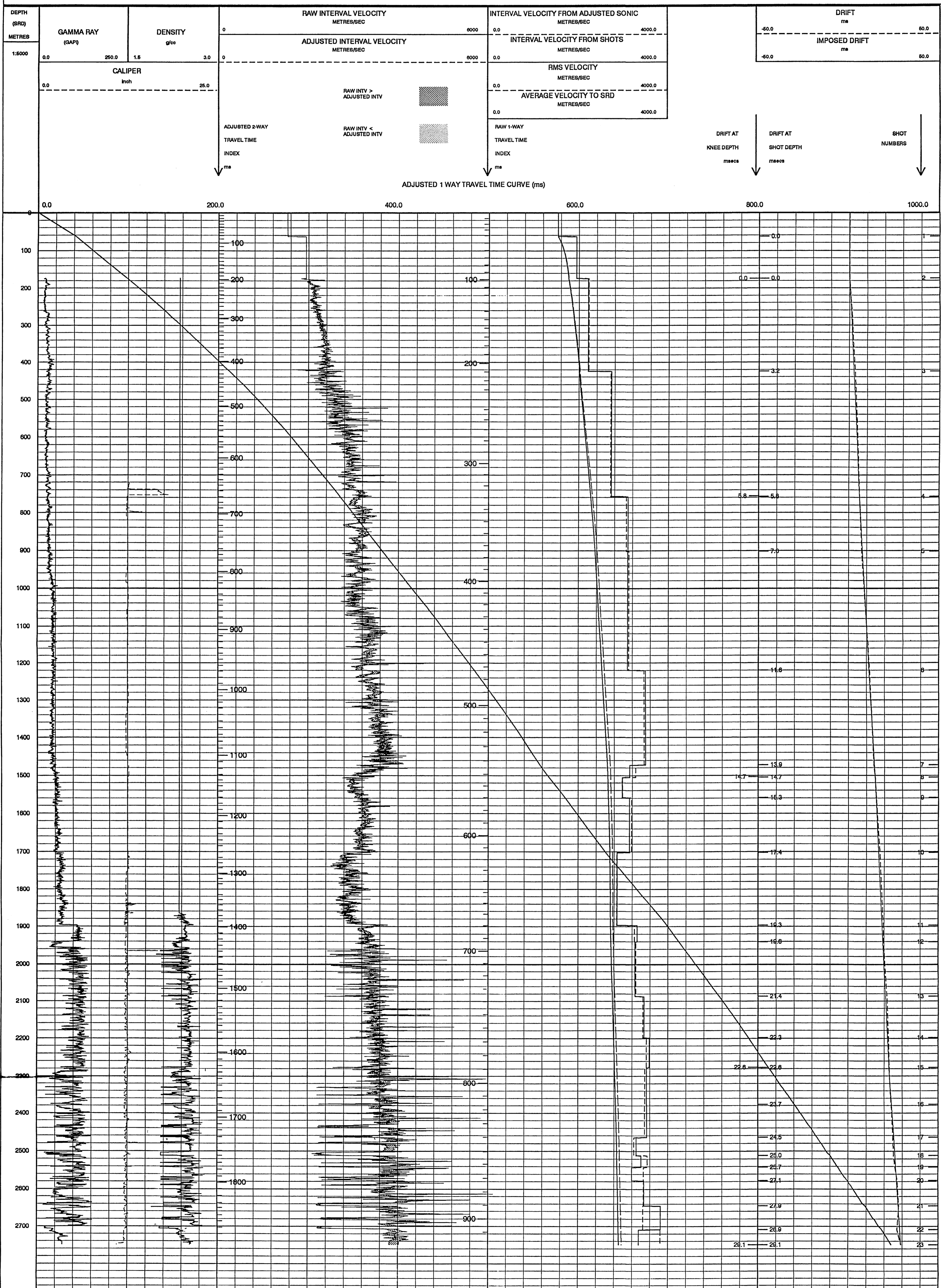
Depth Reference: SRD

Run	Date	Tool Type	SRD	SRD	SRD	Top Depth (SRD)	Bottom Depth (SRD)
1	31-08-92	SLB				778 M	182 M
2	10-09-92	SLB				2778 M	759 M
VSP	Date	Gun	Hydro	Gun	Hydro	Gun	Hydro
1	10-08-92	OHM	OHM	OHM	OHM	10 M BELOW SRL	17 M BELOW SRL
2							

REMARKS

The well name, location and borehole reference data were furnished by the customer.

All interpretations are opinions based on inferences from electrical or other measurements and we cannot, and do not guarantee the accuracy or correctness of any interpretations, and we shall not, except in the case of gross or willful negligence on our part, be liable or responsible for any loss, costs, damages or expenses incurred or sustained by anyone resulting from any interpretations made by any of our officers, agents or employees. These interpretations are also subject to Clause 4 of our General Terms and Conditions as set out in our current Price Schedule.



COMPANY ESSO AUSTRALIA LTD
FIELD OUTPOST
WELL TURRUM 4
COUNTRY AUSTRALIA