

DEPT. NAT. RES & ENV
PE906403

V I C T O R I A

TASMANIA - SOUTH COAST

TO GABO ISLAND

INCLUDING TASMANIA

DEPTH IN FATHOMS
Scale 1:1,000,000 at Lat. 27 15'S

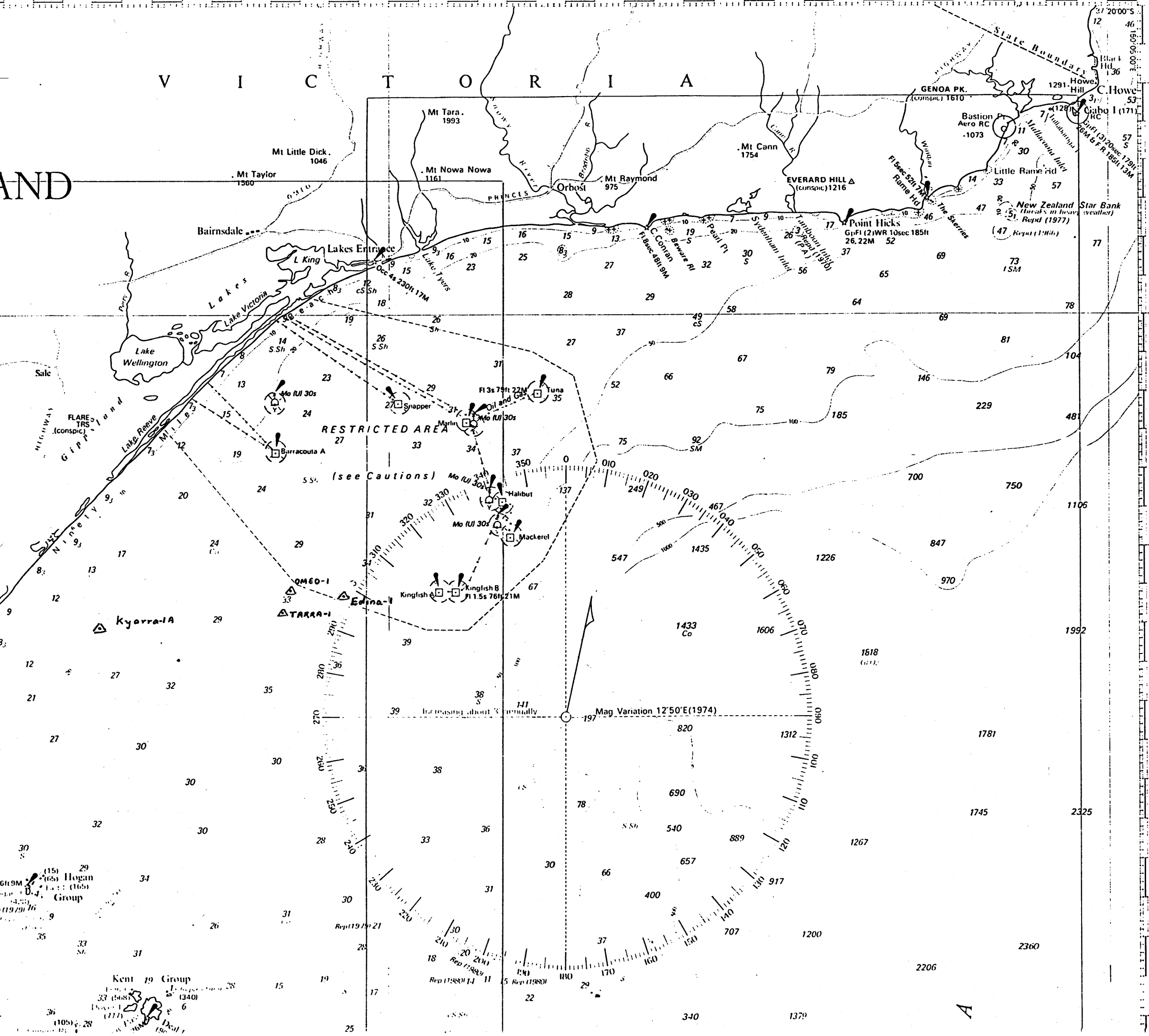
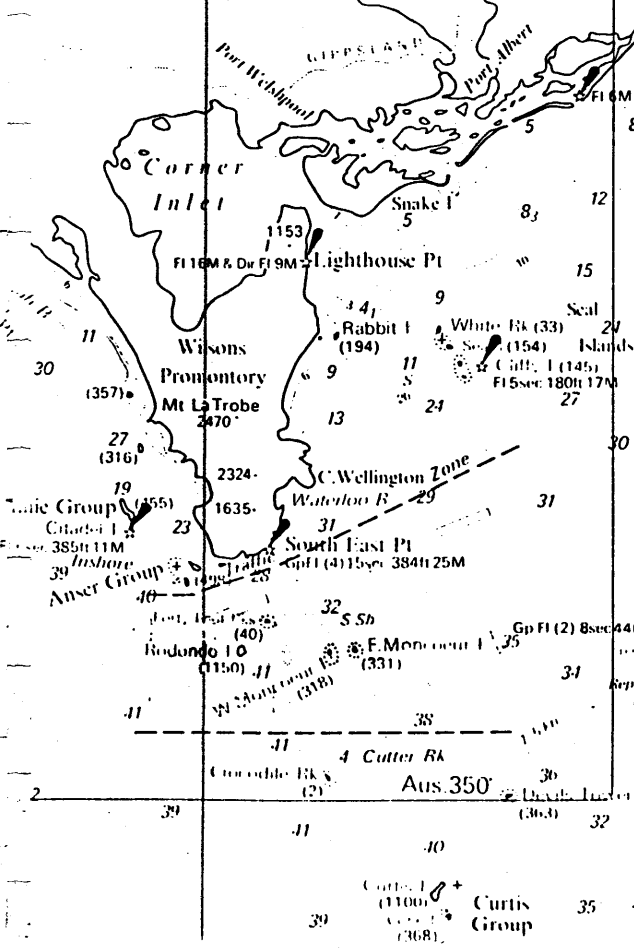
Depths in fathoms (under eleven in fathoms and feet) are related to Indian Spring Low Water. Depths in feet are related to Mean Higher High Water. Positions are related to the Australian Antarctic Datum. Surveys to 1970. Admiralty surveys, seismic and passage soundings to 1970.

FIELDS

Temporarily abandoned wells may have wellhead gear projecting up to about 26 feet (8 metres) from the sea bed.
Submerged production wells are marked by light-buoys.
CAUTION - OMISSIONS In the areas covered by larger scale charts these must be consulted for buoys, lights, beacons and wrecks as on this chart only the principal aids to navigation are shown.
Breach Hill 1877

WELLHEADS

Temporarily abandoned wells may have wellhead gear projecting up to about 26 feet (8 metres) from the sea bed.
Submerged production wells are marked by light-buoys.
CAUTION - OMISSIONS In the areas covered by larger scale charts these must be consulted for buoys, lights, beacons and wrecks as on this chart only the principal aids to navigation are shown.
Breach Hill 1877



Adjoining Chart Aus 423

A