

PLATE 11: 2820 m

Reflected Light

This plate shows a dinoflagellate occurring with liptodetrinite in a siltstone.

Field Dimensions 0.26 mm x 0.18 mm

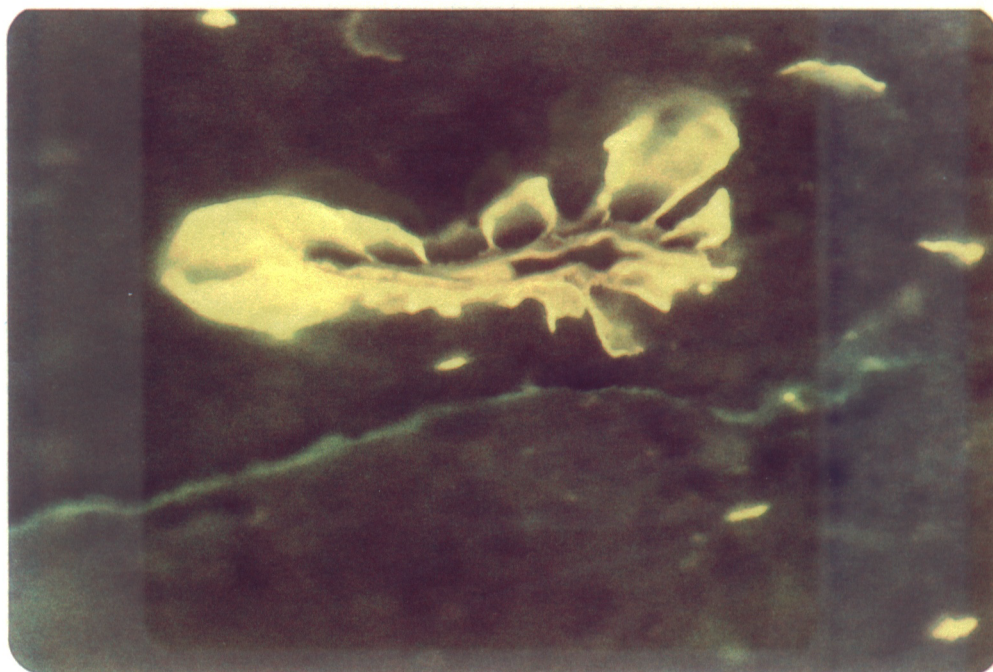


PLATE 12: 2820 m

DEPT. NAT. RES & ENV



PE906394

Fluorescence Mode

Same field as Plate 11. The fluorescence colour and intensity of the liptodetrinite are very similar to those of the dinoflagellate. This indicates that the liptodetrinite is probably fragmented phytoplankton.