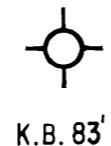


A
NW

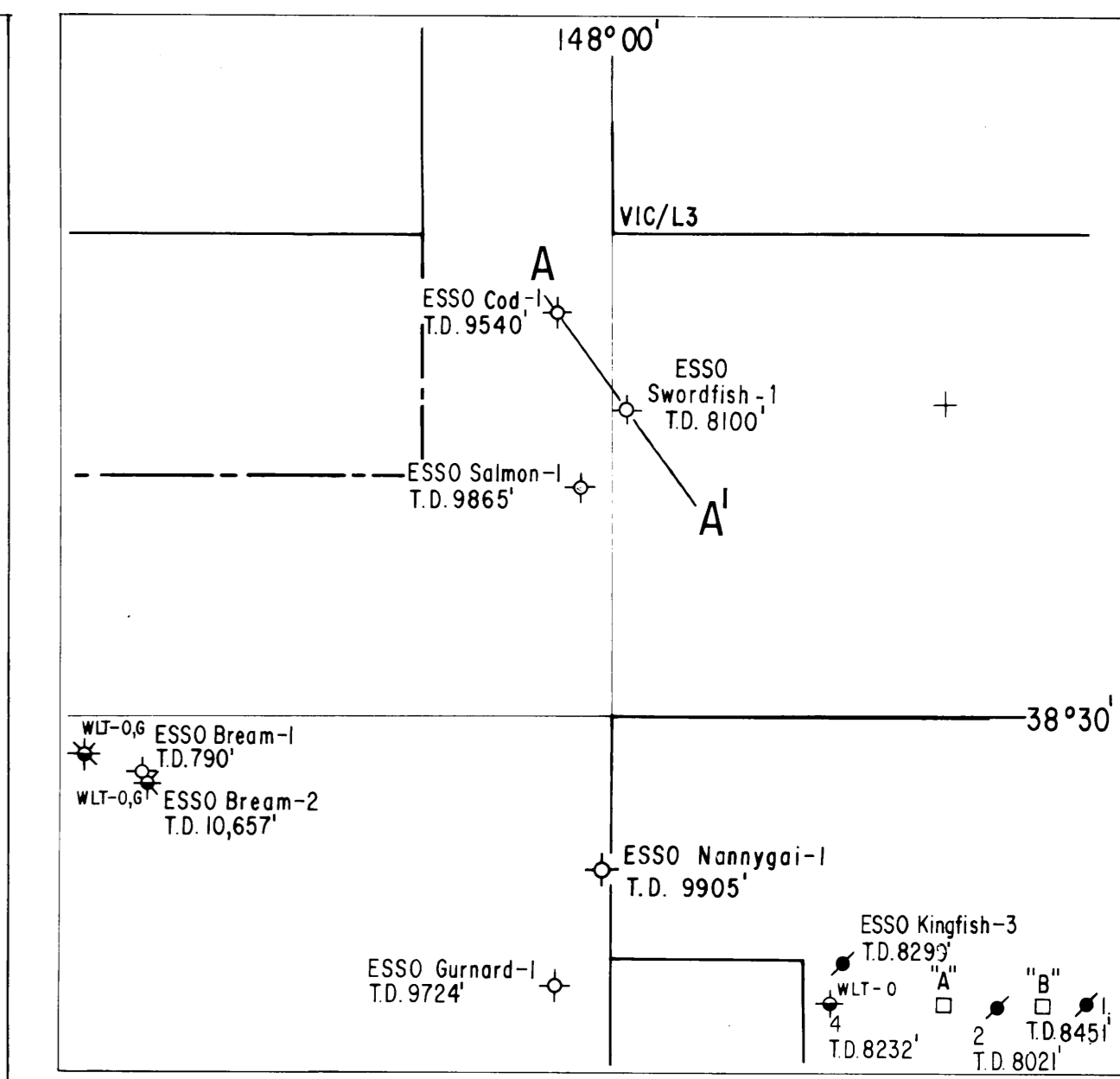
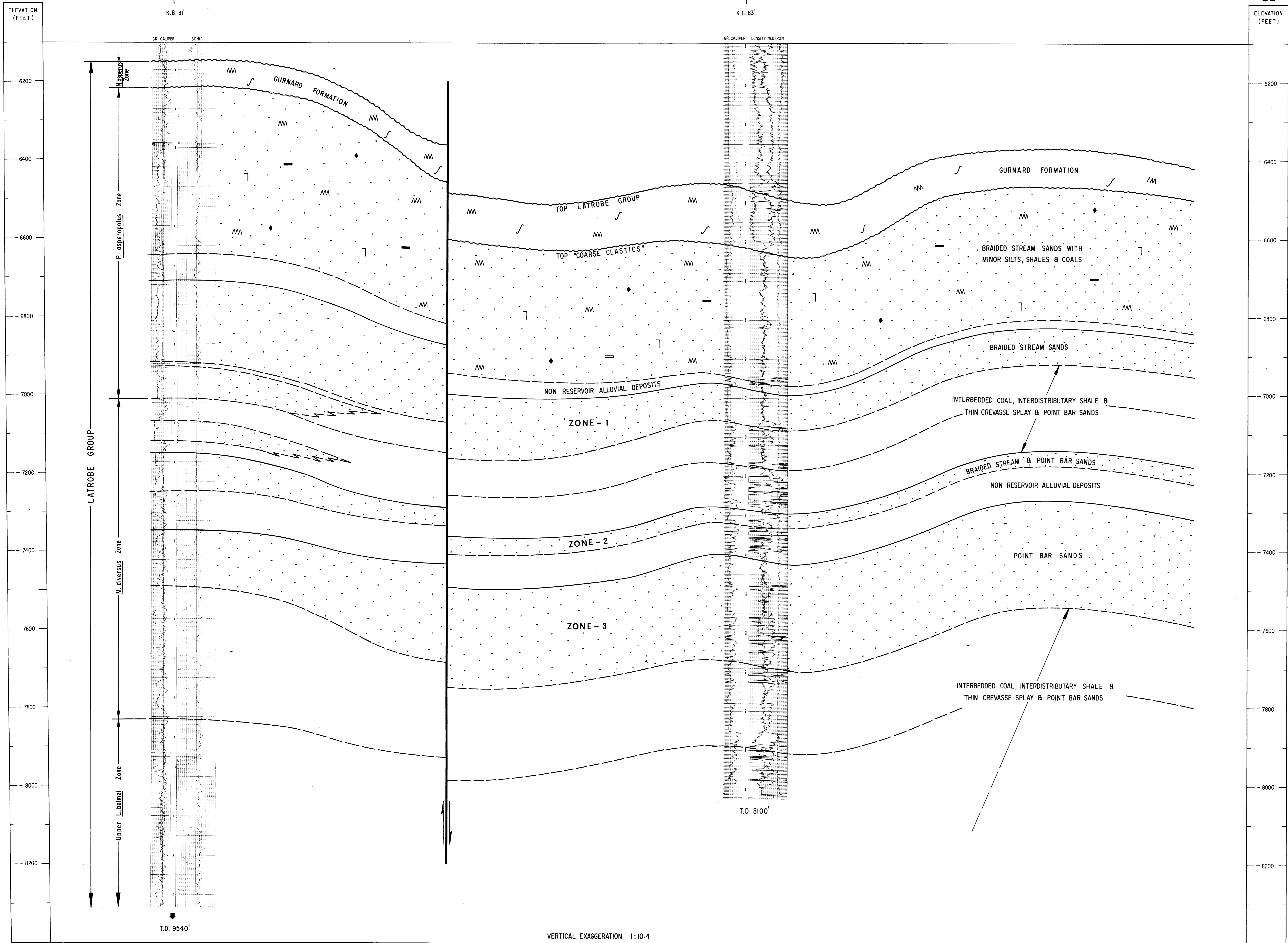
Cod - 1



Swordfish - 1

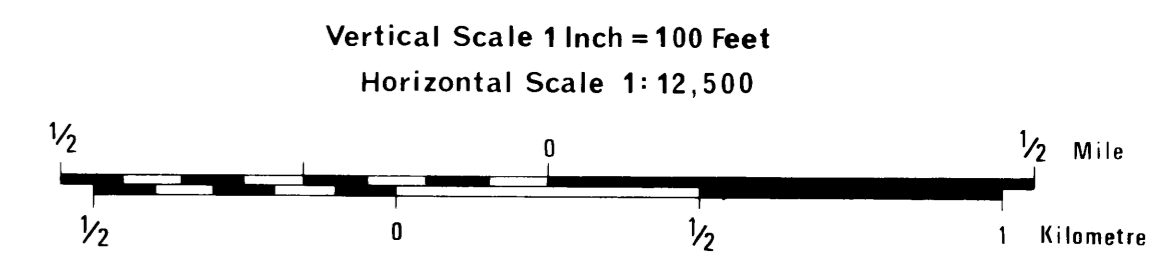


A'
SE



LOCALITY MAP
Scale - 1:250,000

ESSO EXPLORATION AND PRODUCTION AUSTRALIA INC.
GIPPSLAND BASIN
 VICTORIA
 SWORDFISH PROSPECT
GEOLOGICAL CROSS SECTION A-A'
 (POST SWORDFISH - 1)



AUTHOR : R.G. BELLIS
 TO ACOMP : SWORDFISH - 1
 WELL COMPLETION REPORT

DRAFTED BY : K. ANDREWS
 DATE : MAY 1977

Swordfish R