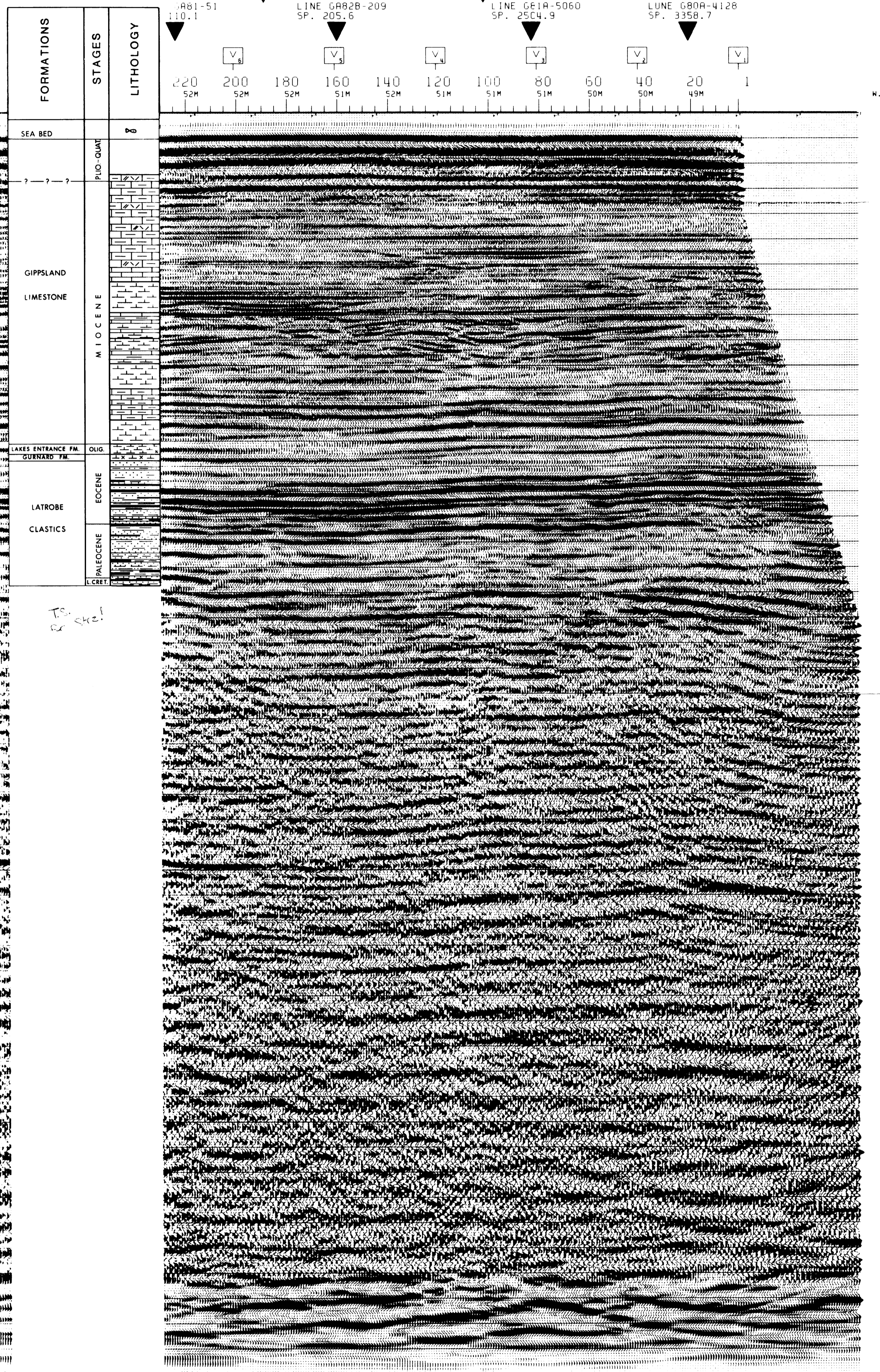


LINE GA82B-211A
S.P. 1-452

SP 441.00	SP 401.00	SP 361.00	SP 321.00	SP 281.00	SP 241.00	SP 201.00	SP 161.00	SP 121.00	SP 81.00	SP 41.00	SP 1.00
TIME RMS VEL	TIME RMS VEL	TIME RMS VEL	TIME RMS VEL	TIME RMS VEL	TIME RMS VEL	TIME RMS VEL	TIME RMS VEL	TIME RMS VEL	TIME RMS VEL	TIME RMS VEL	TIME RMS VEL
0.00 1500	0.00 1500	0.00 1500	0.00 1500	0.00 1500	0.00 1500	0.00 1500	0.00 1500	0.00 1500	0.00 1500	0.00 1500	0.00 1500
0.13 1500	0.13 1520	0.13 1500	0.14 1520	0.13 1500	0.13 1500	0.13 1500	0.13 1500	0.13 1500	0.13 1500	0.13 1500	0.09 1500
0.57 2280	0.40 1950	0.49 2000	0.73 2250	0.66 2400	0.32 2000	0.35 1840	0.80 2500	0.45 2140	0.48 2120	0.28 1860	0.32 2090
0.95 2730	0.70 2410	0.67 2320	0.95 2650	0.89 2600	0.76 2440	0.49 2130	0.96 2650	0.89 2630	0.80 2570	0.83 2540	0.83 2300
1.06 2800	1.00 2710	0.91 2700	1.12 2800	1.17 2810	1.08 2750	0.73 2380	1.15 2810	1.24 2890	1.12 2810	1.15 2890	0.95 2700
1.36 2840	1.41 3000	1.17 2830	1.37 2900	1.44 2920	1.26 2860	1.44 2950	1.56 2940	1.53 2950	1.24 2900	1.50 2900	1.23 2850
1.59 2840	1.92 3110	1.37 3000	1.59 3000	1.66 2990	1.54 2980	1.15 2780	1.98 2940	2.13 3080	1.46 2940	1.91 3070	1.45 2900
1.78 3090	2.26 3300	1.58 3000	1.78 3000	1.98 3010	1.98 2980	1.54 2990	2.18 3180	2.52 3290	1.62 2960	3.20 4000	1.75 2980
1.97 3250	3.20 4000	2.00 3070	2.50 3500	2.32 3310	2.20 3360	1.91 2990	2.54 3600	4.01 4500	1.91 3000	4.00 4500	1.85 3160
3.20 4010	4.00 4500	3.35 3900	3.20 4000	3.20 4000	3.20 4000	2.70 3640	5.20 4000	5.03 4800	2.20 3050	5.00 4800	2.59 3610
4.00 4500	5.00 4800	4.00 4500	4.00 4500	4.00 4500	4.00 4500	4.00 4500	4.00 4500	4.00 4500	4.00 4500	4.00 4500	4.00 4500
5.00 4800		5.00 4800	5.00 4800	5.00 4800	5.00 4800	5.00 4800	5.00 4800	5.00 4800	5.00 4800	5.00 4800	5.00 4800

SPEKE - 1
S.P. 230

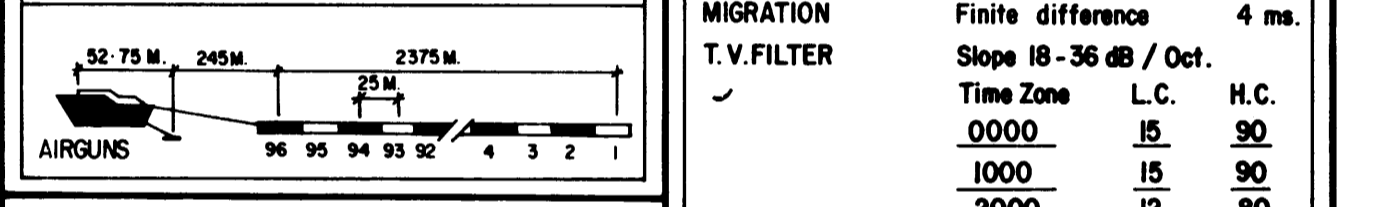


MIGRATED SECTION LINE: GA82B-211A
S.P. 1 to S.P. 452
AIR GUN
LEGEND
NORTH
SHOT DIRECTION = 195.1 DEGREES
SCALE
1 KM

4800% TIME SECTION (STK, MIG, TVF, AGC)
AUSTRALIAN AQUITAINE PETROLEUM
GA82B SEISMIC SURVEY
AREA: VIC/P17

WESTERN GEOPHYSICAL
DIVISION OF LITTON INDUSTRIES
SINGAPORE DIGITAL CENTRE
RECORDED JUNE 1982
PROCESSED SEPTEMBER 1982
FINAL REEL NO. 313375

RECORDING DATA		PROCESSING SEQUENCE PARAMETERS	
BOAT	M/V McDermott Party 2931(GS) Navigation Sytidis Map Locations CDP Position	EDIT	Demultiplex to trace sequential Geophone amplitude ft. pt. Sample rate 4 ms
SOURCE	Air Guns 2000 psi Gun Depth 6 m S.P. Interval 25 m Pop Interval 25 m Shooting Rate 40 Pops / km. Pops / S.P. 1	ATS	Summing 2 adjacent traces 4 ms
INSTRUMENTS	System OPS II Filter 8 Hz -128 Hz Record Length 6 sec. Gun Delay 51-2 ms Sample Rate 2 ms. Format Seg-B Polarity Normal	PRE-PROCESSOR	Data arranged into common depth families
CABLE	Streamer 2400 m Groups 96 Group Interval 25 m Lead In 245 m Cable Depth 11 m average	D.B.S.	Geometric spreading compensation Conversion to fixed point format D.B.S. type -least squares Minimum phase inverse filter 2 equal windows Auto corr. length 204 ms. Min. prediction lag 8 ms. Operator length 200 ms. Sample rate 4 ms.
		VELOCITY ANALYSIS	Every 40 cdfs 2 cdfs / analysis
		N.M.O.-STACK	4800% N.M.O. correction Sample rate 4 ms.
		RESIDUAL	Q.C. of stacking velocities Restack if necessary
		MIGRATION	Finite difference 4 ms. Slope 18-36 dB / Oct.
		T.V.FILTER	Time Zone L.C. H.C. 0000 15 90 1000 15 90 2000 12 80 3000 8 70 5000 8 60
		GAIN	Sample rate 2 ms. A.G.C. gain 600ms. window
		PLAYBACK	Scale -Horizontal... 10 tr./cm Vertical... 10 cm./sec Sample rate 2 ms. Geospace gain 13 dB.



CORRECTION APPLIED	
GUN DEPTH	+ 004 ms.
CABLE DEPTH	+ 007 ms.
TOTAL CORR.	+ 011 ms.

POLARITY NORMAL
COMPRESSION PULSE REPRESENTED BY NEGATIVE NUMBER (TROUGH)

