

AUSTRALIAN LOG INTERPRETATION CENTRE

SEISMIC CALIBRATION LOG  
ADJUSTED CONTINUOUS VELOCITY LOG

SCHLUMBERGER

COMPANY AUSTRALIAN AQUITAINE  
WELL SPEKE #1  
FIELD WILDCAT  
COUNTRY AUSTRALIA

LOCATION COORDINATES:  
LATITUDE 38 30 34.62 S  
LONGITUDE 147 37 11.79 E

COMPUTER CENTER RSJ  
ANALYST R. BUNT  
JOB REFERENCE 540285  
DATE 3-JUN-85

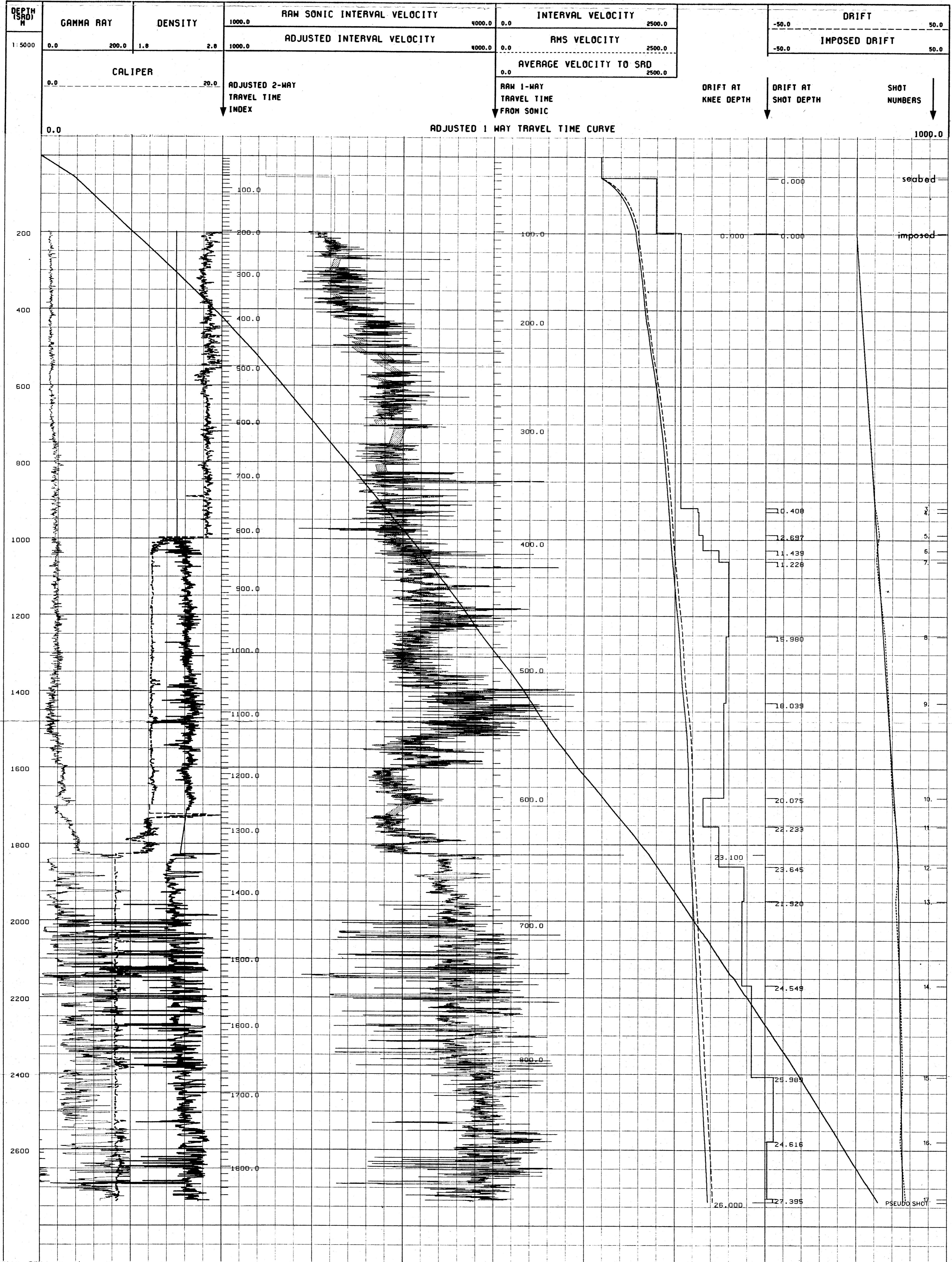
SEISMIC REFERENCE DATUM NSL

ELEVATIONS:  
KB 22.0 M  
DF 21.5 M  
GL -55.0 M

UNITS: METRES  
PERMANENT DATUM: NSL  
LOGS MEASURED FROM: KB  
DRILLING MEASURED FROM: KB  
VELOCITY LOG DEPTHS REFERRED TO: NSL  
DATES OF SONIC RUNS: 20.25-30-JUN-84, 6-JUL-84  
DATES OF CHECK SHOTS RUNS: 7-JUL-84  
WELL TOTAL DEPTH: 2772 M  
TOTAL NUMBER OF CHECK SHOTS LEVELS: 16  
WELL DEVIATION: NIL

SONIC RUN DATE LOGGED GUN ELEVATION ACCEL. ELEVATION  
4 6-JUL-84 -4M NSL -4M NSL  
BIT SIZE/DEPTH CHSNG SIZE/DEPTH GUN OFFSET HYDRO OFFSET  
8 1/2"/2772 M 9 5/8"/1704 M 0M 0M  
BOT INTERVAL TOP INTERVAL SONDE TYPE  
2760 M 220 M NSC-R

REMARKS



COMPANY AUSTRALIAN AQUITAINE PETROLEUM  
FIELD WILDCAT  
WELL SPEKE #1  
COUNTRY AUSTRALIA

SCHLUMBERGER