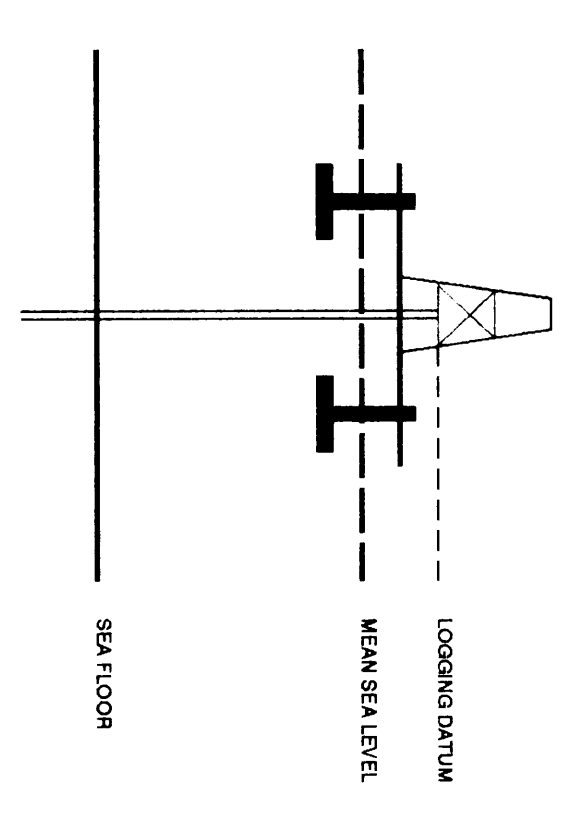


VERTICAL SEISMIC PROFILE

ZERO OFFSET VSP **PLOT 5**
WAVESHAPING & CORRIDOR STACK

Company: ESSO AUSTRALIA LTD.
Well: SMILER-1
Field: WILDCAT
Country: AUSTRALIA
Reference No: SVJ561191/561132 Interval: 2614.00 to 182.00
Date Logged: 13-JULY-1995 Date Processed: 21-JULY-1995
Location: 038 28 55.18' S 148 23 17.09' E
Elevations: KB: 25.00 DF: 24.70 GL: -122.00
Permanent Datum: MSL Depth Units: METRES
FIELD RECORDS: Engineer: R. JOHNSONS/ROCKWATERMAN VSA Program Version: 700-87
COMPILED BY: Analyst: A. WASSONG Centre: SVJ Barrow: 26.5

ELEVATION ABOVE MEAN SEA LEVEL



Logging Datum: 25.00
Seismic Reference Datum: 0.00

Time Reference		SHD		Casing Steel		Top		Bottom	
Date	Total Type	RI Start Depth	RI End Depth	Depth	Depth	Depth	Depth	Depth	Depth
ONE	04-07-1995	AS-LD	17.8 M			170 M	175 M	757 M	757 M
TWO	15-07-1995	DL-LD-A4	12.8 M			742 M	742 M	2865 M	2865 M
VSP	Date	Gun	Hydro	Gun	Hydro	Gun	Hydro	Gun	Hydro
ONE	13-07-1995	50 M	50 M	5 M BELOW MSL	19 M BELOW MSL	69 DEG	69 DEG	69 DEG	69 DEG

The well name, location and borehole reference data were furnished by the customer.

All interpretations are opinions based on inferences from electrical or other measurements and we cannot, and do not guarantee the accuracy or correctness of any interpretations, and we shall not, except in the case of gross or willful negligence on our part, be liable or responsible for any loss, costs, damages or expense incurred or sustained by anyone resulting from any interpretations made by any of our officers, agents or employees. These interpretations are also subject to Clause 4 of our General Terms and Conditions as set out in our current Price Schedule.

*** CORRIDOR STACK + AGC ***
AGC WINDOW : 200 MS
POLARITY (S.E.G.) : REVERSE

*** CORRIDOR STACK ***
CORRIDOR WINDOW : 150 MS
POLARITY (S.E.G.) : REVERSE

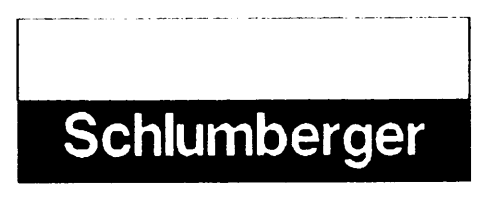
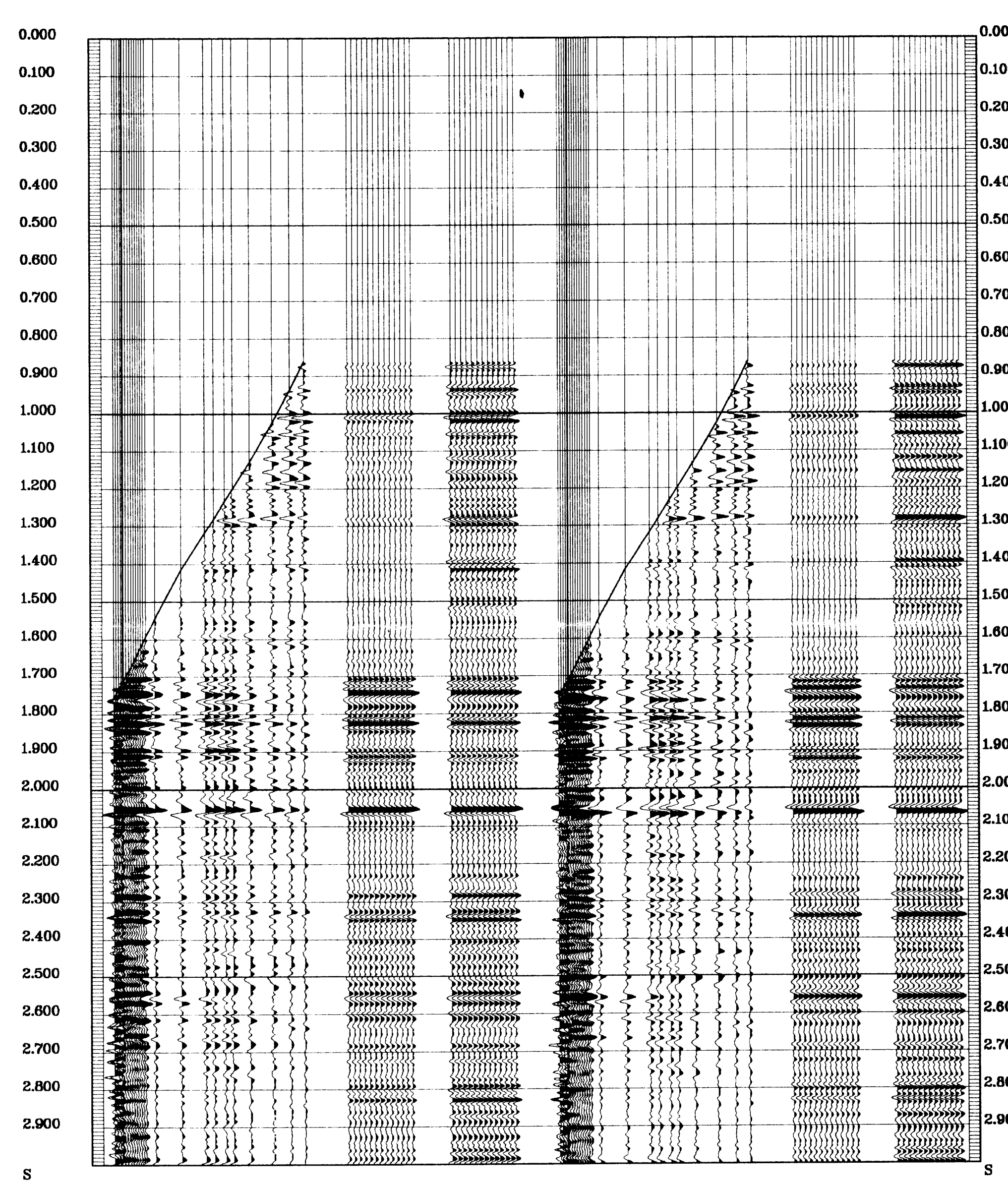
**** WAVESHAPING ****
WAVESHAPING DECONVOLUTION
ZERO PHASE
ENHANCED UPDIPING WAVEFIELD
PROCESSING SEQUENCE:
MEDIAN STACK APPLIED

*** CORRIDOR STACK + AGC ***
AGC WINDOW : 200 MS
POLARITY (S.E.G.) : NORMAL

*** CORRIDOR STACK ***
CORRIDOR WINDOW : 150 MS
POLARITY (S.E.G.) : NORMAL

**** WAVESHAPING ****
WAVESHAPING DECONVOLUTION
ZERO PHASE
ENHANCED UPDIPING WAVEFIELD
PROCESSING SEQUENCE:
MEDIAN STACK APPLIED

RAW DEPTH	TRUE VERTICAL DEPTH MSL	TRANSIT TIME	LEVEL NO
0.0	0.0	6100	0
0.0	0.0	6000	0
0.0	0.0	5900	0
0.0	0.0	5800	0
0.0	0.0	5700	0
0.0	0.0	5600	0
0.0	0.0	5500	0
2000.0	2000.0	6811	15
0.0	0.0	6100	0
0.0	0.0	6000	0
0.0	0.0	5900	0
0.0	0.0	5800	0
0.0	0.0	5700	0
0.0	0.0	5600	0
0.0	0.0	5500	0
2000.0	2000.0	6811	15
1096.0	1096.0	6100	0
1414.0	1144.0	6100	0
1294.0	1298.0	6100	0
1472.0	1447.0	6100	0
1865.0	1838.0	6100	0
1844.0	1793.0	6100	0
1844.0	1793.0	6100	0
2091.0	2090.0	6798	19
2242.0	2239.0	6779	18
2442.0	2439.0	6779	18
2442.0	2439.0	6779	18
2500.0	2500.0	6779	18



COMPANY ESSO AUSTRALIA LTD.
FIELD WILDCAT
WELL SMILER-1
COUNTRY AUSTRALIA