

28 JUL 1982

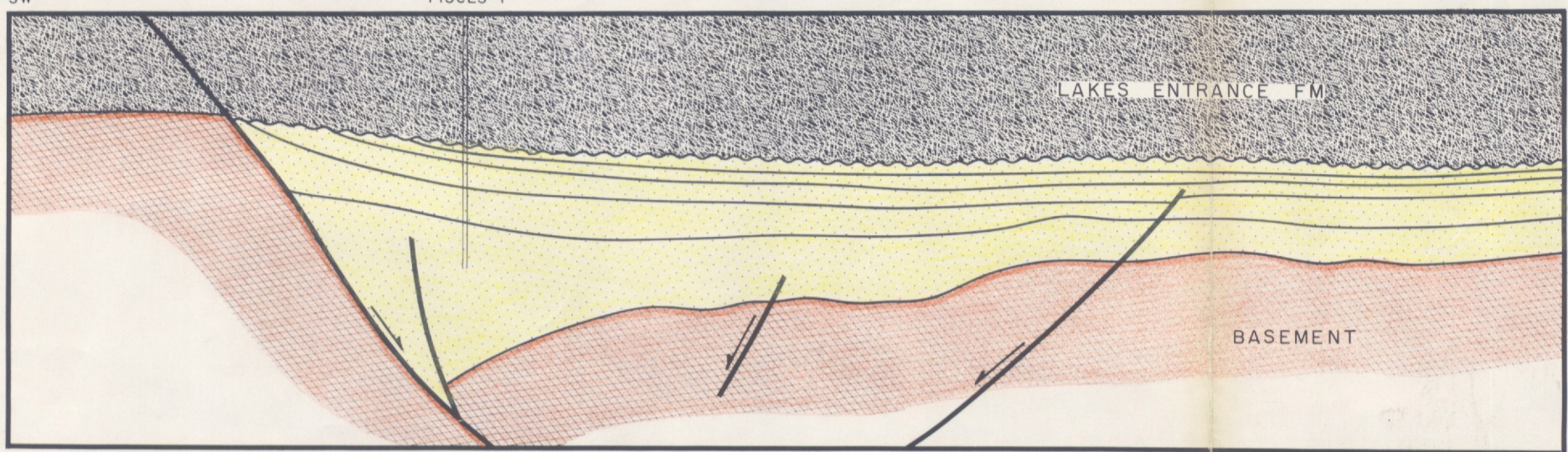
Geological Evaluation Report PISCES-1

FIGURE 7: THE SIGNIFICANCE OF THE GEOMETRY OF THE GURNARD FORMATION

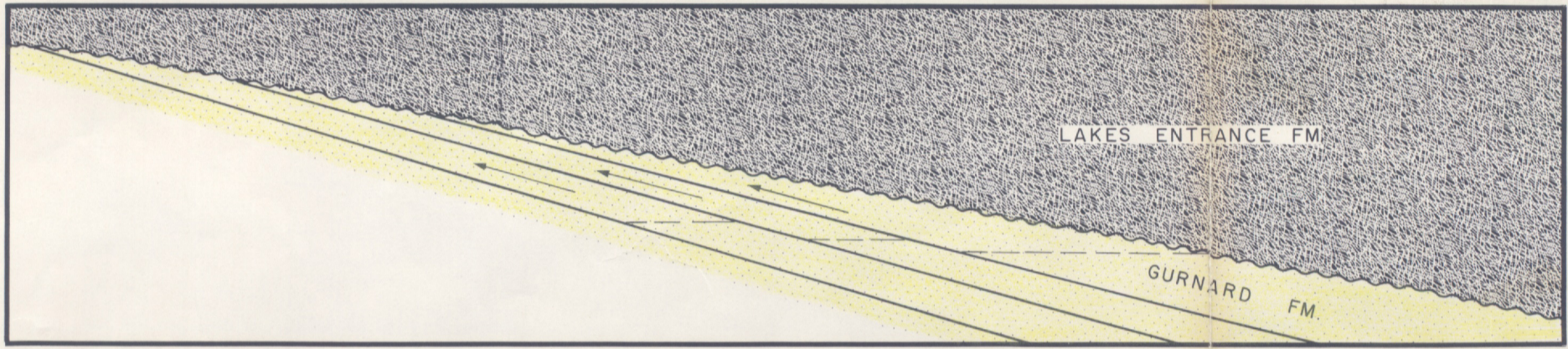
DEPT. NAT. RES & ENV
PE906261

PISCES GAS DIVISION

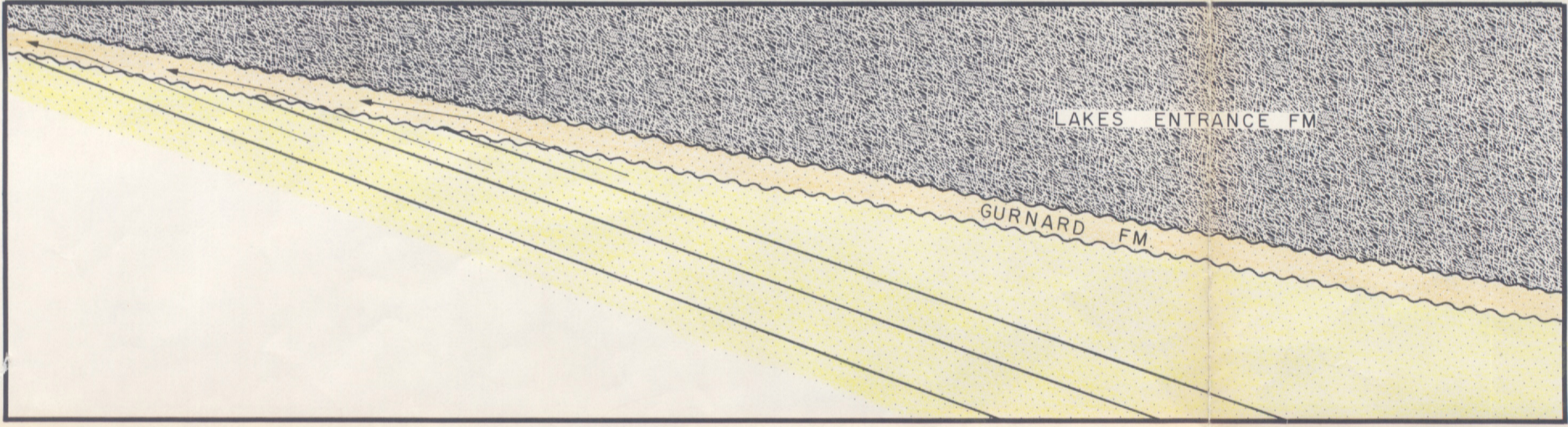
(1) ORIGINAL CONCEPT OF THE PISCES PROSPECT



(2) ASSERTION : THAT THE GURNARD FM. IS THE YOUNGEST PART OF THE LATROBE GP.



(3) REALISATION : THAT THE GURNARD FM. (AND LAKES ENTRANCE GREENSAND) ARE UNCONFORMABLE SHEET SANDS ABOVE THE LATROBE GROUP



(4) SIGNIFICANCE : SHEET SANDS OF THE GURNARD FM. (AND LAKES ENTRANCE GREENSAND) WILL ACT AS AN "OIL SUMP" TO STRATIGRAPHIC PLAYS BUT WILL ENHANCE RESERVOIR CAPACITY IN STRUCTURAL PLAYS

