



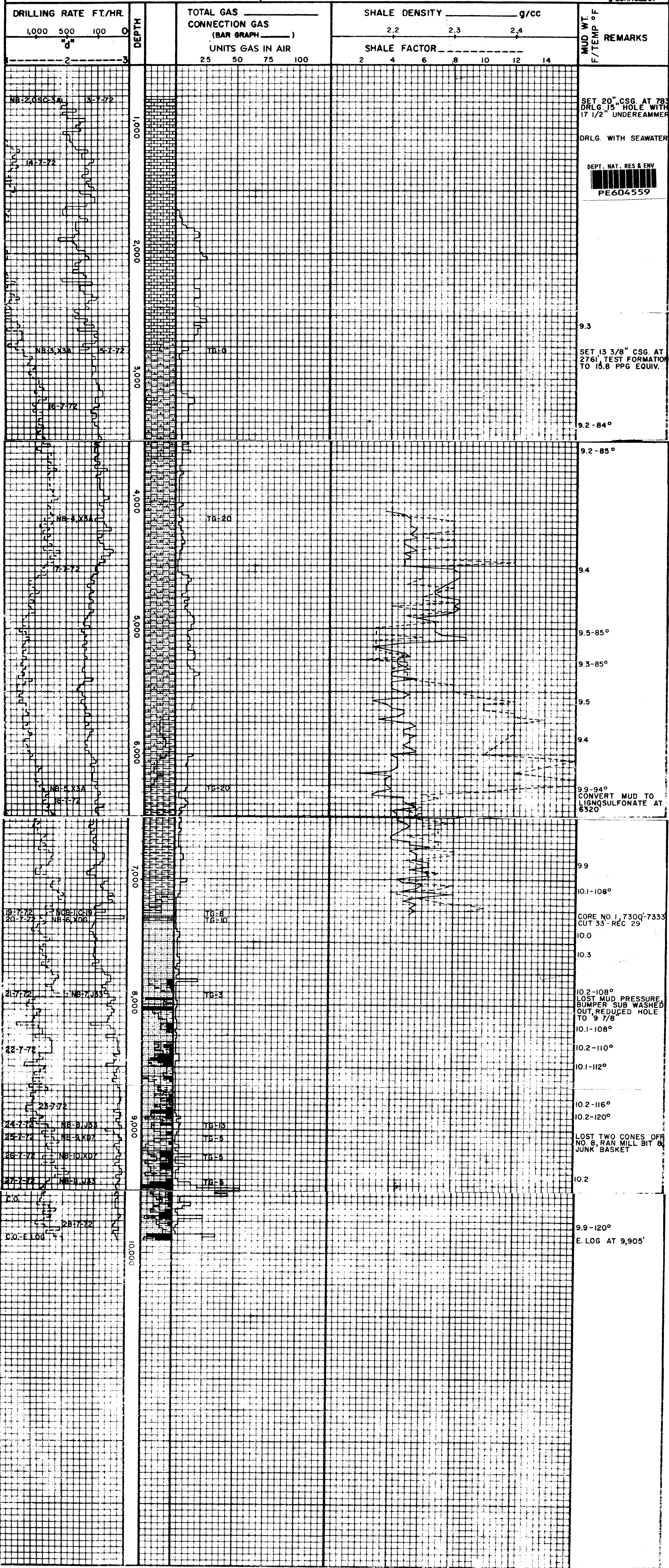
WELL NANNYGAJ NO. 1
 COMPANY ESSO AUSTRALIA LTD.
 COUNTY GIPPSLAND BASIN
 STATE VICTORIA

DEPTH CORRESPONDS TO DRILL
 PIPE MEASUREMENTS
 NB NEW BIT
 NCB NEW CORE BIT
 DST DRILL STEM TEST

LEGEND

TS TRIP GAS
 NR NO RETURNS
 E LOG ELECTRIC LOG
 CO CIRCULATE OUT RETURNS
 CFX CHECK FOR FLOW
 MARL-SLST
 BAND
 SHALE

APPLIED
 DRILLING
 TECHNOLOGY



SET 20" CSG AT 783
 DRLG. 15" HOLE WITH
 17 1/2" UNDERREAMER
 DRLG. WITH SEAWATER

DEPT. NAT. RES & ENV

 PE604559

9.3
 SET 13 3/8" CSG AT
 2761, TEST FORMATION
 TO 15.8 PPG EQUIV.

9.2-84°

9.2-85°

9.4

9.5-85°

9.3-85°

9.5

9.4

9.9-94°
 CONVERT MUD TO
 LIGNOSULFONATE AT
 6320

9.9

10.1-108°

CORE NO. 1, 7300-7333
 CUT 33- REC 29

10.0

10.3

10.2-108°
 LOST MUD PRESSURE
 BUMPER SUB WASHED
 OUT, REDUCED HOLE
 TO 9 7/8"

10.1-108°

10.2-110°

10.1-112°

10.2-116°

10.2-120°

LOST TWO CONES OFF
 NO. 8, RAN MILL BIT &
 JUNK BASKET

10.2

9.9-120°

E. LOG AT 9,905'