



WELL NAME: MACKRELL NO. 2  
 COMPANY: ESSO  
 COUNTY: GIPPSLAND BASIN  
 STATE: VICTORIA

DEPTH CORRESPONDENCE TO DRILL  
 PIPE MEASUREMENTS  
 NS NEW BIT  
 NCB NEW CORE BIT  
 OST DRILL STOP TEST AT 100'  
 RW NO RETURNS  
 TC TRIP GAS  
 CC CALCULATE COST RETURNS

SSKS GRANITE WASH LIME STONE  
 SHALE GYP ANHYDRITE DOLOMITE  
 CHERT  
 LIQUITY

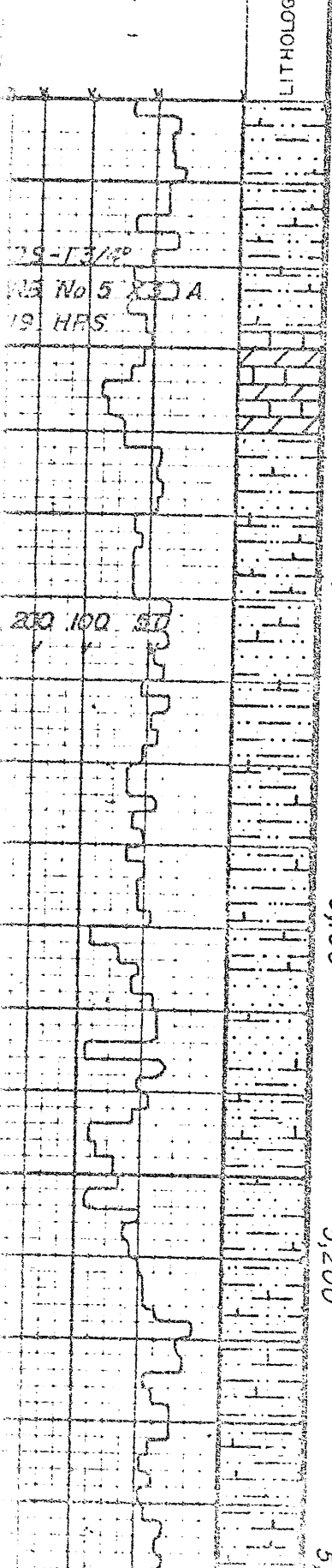
DRILLING RATE  
 FEET PER HOUR  
 FEET PER MINUTE

LITHOLOGY

DEPTH

DOTM HYDROCARBONS IN MUD (MHOCC) (ppm)

REMARKS



DEPTH	C <sub>1</sub>	C <sub>2</sub>	C <sub>3</sub>	C <sub>4</sub>	C <sub>5+</sub>
50	10M 10M 20M	2M	2M	2M	5M
4,900	300 ppm				
	TG = 60 TCL = 17,000				
	CARB LAG 4 cz = 80 units				
	1075 cpm up 2 pumps				
5,000	300 ppm				
	10M 10M 20M	2M	2M	2M	5M
	50 100 150				
5,100	400 ppm				
5,200	400 ppm				

10 of 18

F / TEMP  
 102° F

LS-M/DK  
 BRN VF GR  
 DNS HD  
 DOLO.

WT 9.5  
 CL  
 NO H<sub>2</sub>S  
 GAS

MARL-LT  
 GY V SLTY  
 SDY SFT  
 CALC TR  
 CLR QTZ  
 PEB &  
 FORAMS

DEPT. NAT. RES & ENV  

 PE603308