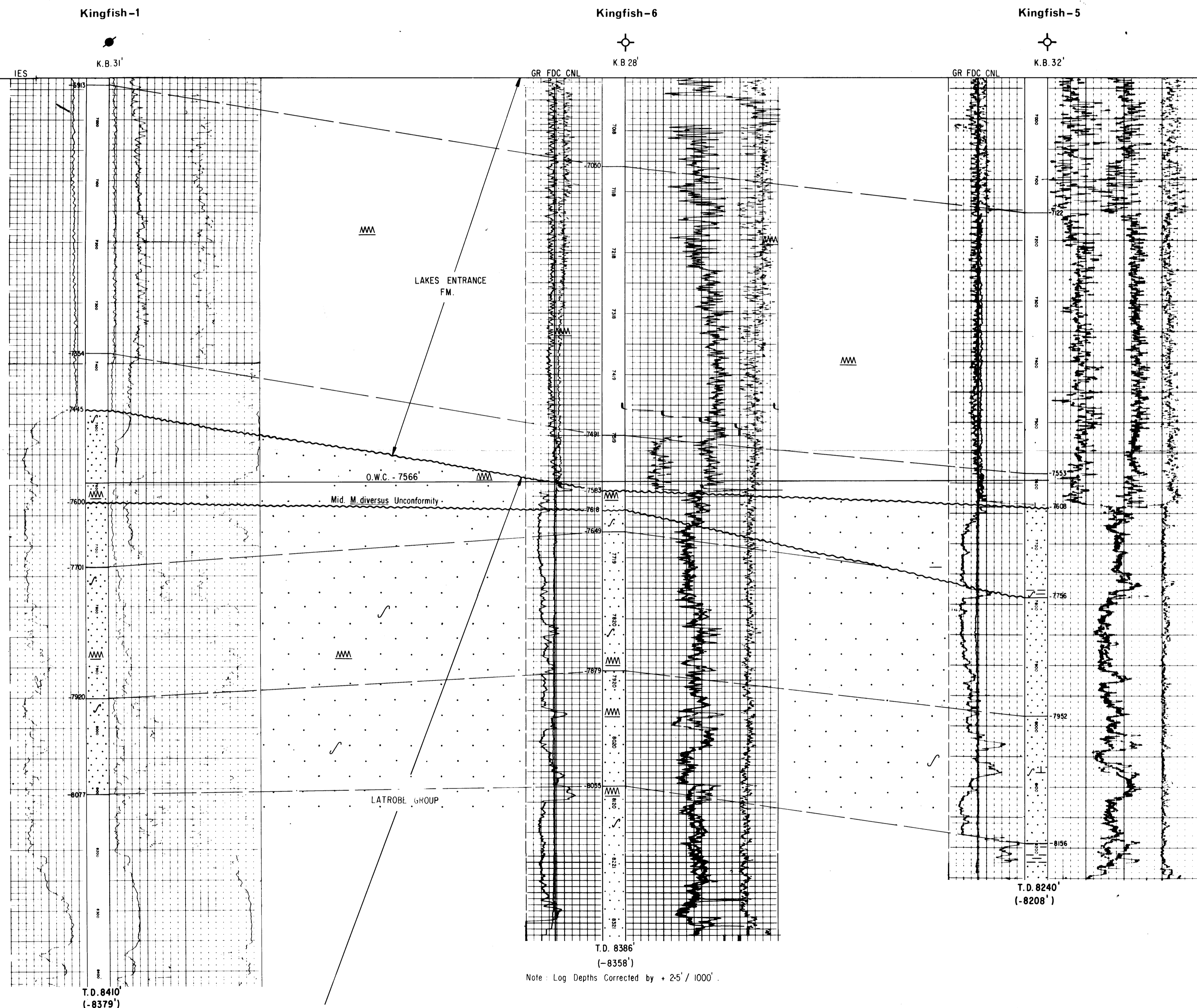


A
SOUTHWEST
ELEVATION
(FEET)

-6900
-7000
-7100
-7200
-7300
-7400
-7500
-7600
-7700
-7800
-7900
-8000
-8100
-8200
-8300
-8400

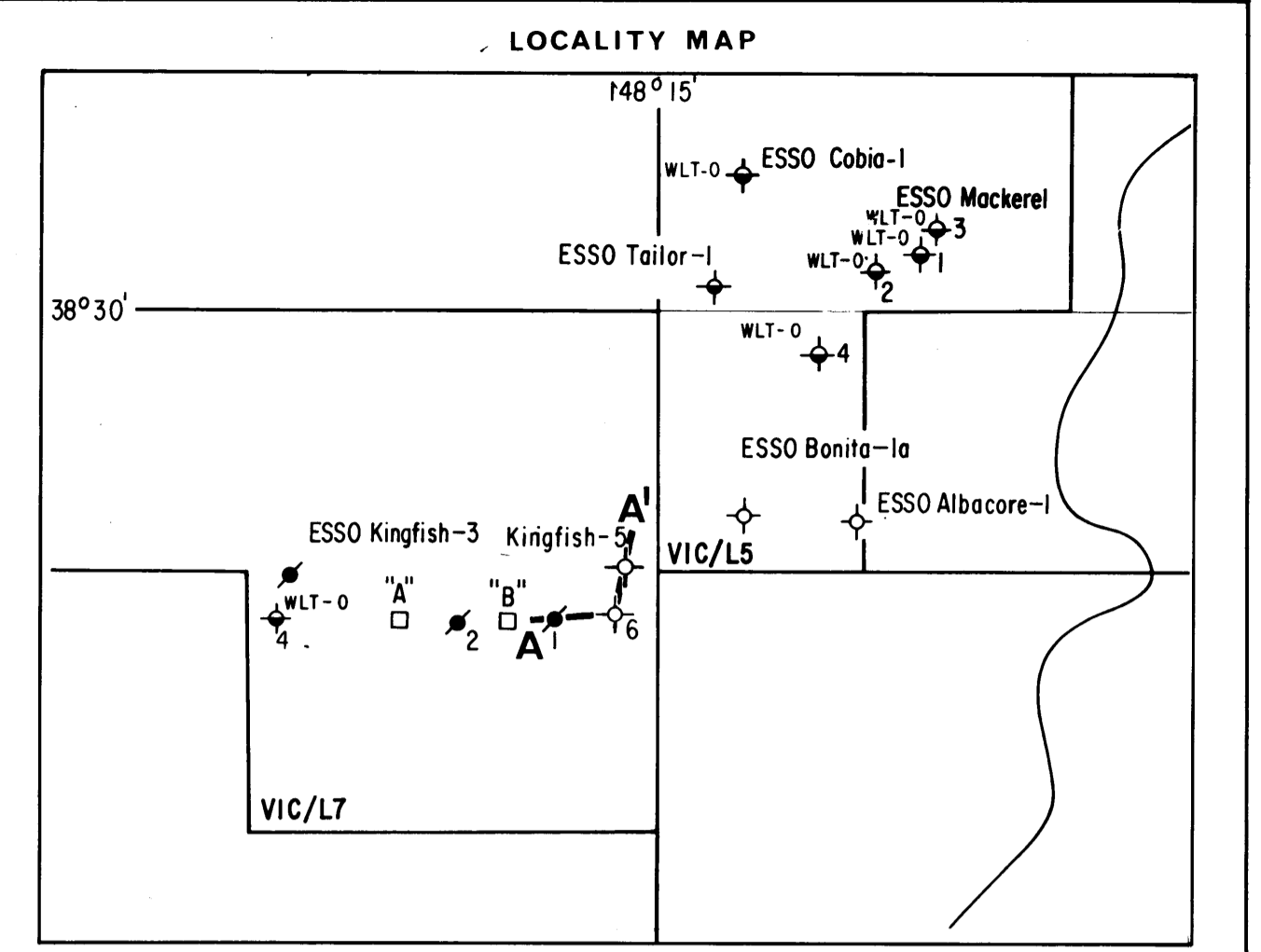


Note: Log Depths Corrected by + 2.5' / 1000'

VERTICAL EXAGGERATION 8-3 : 1

A'
NORTHEAST
ELEVATION
(FEET)

-6900
-7000
-7100
-7200
-7300
-7400
-7500
-7600
-7700
-7800
-7900
-8000
-8100
-8200
-8300
-8400



INTERPRETATIVE

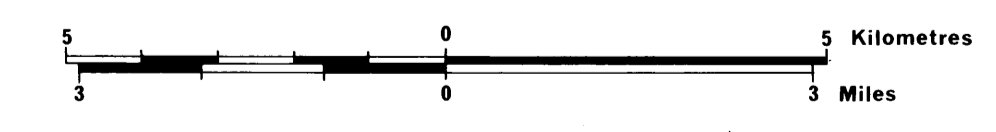


ESSO EXPLORATION AND PRODUCTION AUSTRALIA INC.
THE GIPPSLAND BASIN
VICTORIA
EAST KINGFISH FIELD EXTENSION
POST KINGFISH-6

GEOLOGICAL CROSS SECTION A-A'

(LOG DEPTHS CORRECTED BY + 2.5' / 1000' FOR KINGFISH-6)

VERTICAL SCALE 1" = 100' DATUM: SEA LEVEL
Scale 1 : 10,000



AUTHOR : J. BEIN, W.W. HALLSTEIN
DRAFTED BY : M. SPACK
TO ACCOMPANY : WELL COMPLETION REPORT
KINGFISH-6
DATE : FEBRUARY, 1975

PLATE II