



WELL KINGFISH NO. 6
 COMPANY ESSO
 COUNTY GIPPSLAND BASIN
 STATE VICTORIA

LEGEND
 DEPTH CORRESPONDS TO DRILL PIPE MEASUREMENTS.
 NB NEW BIT
 NCB NEW CORE BIT
 DST DRILL STEM TEST
 NR NO RETURNS
 TG TRIP GAS
 CO CIRCULATE OUT RETURNS

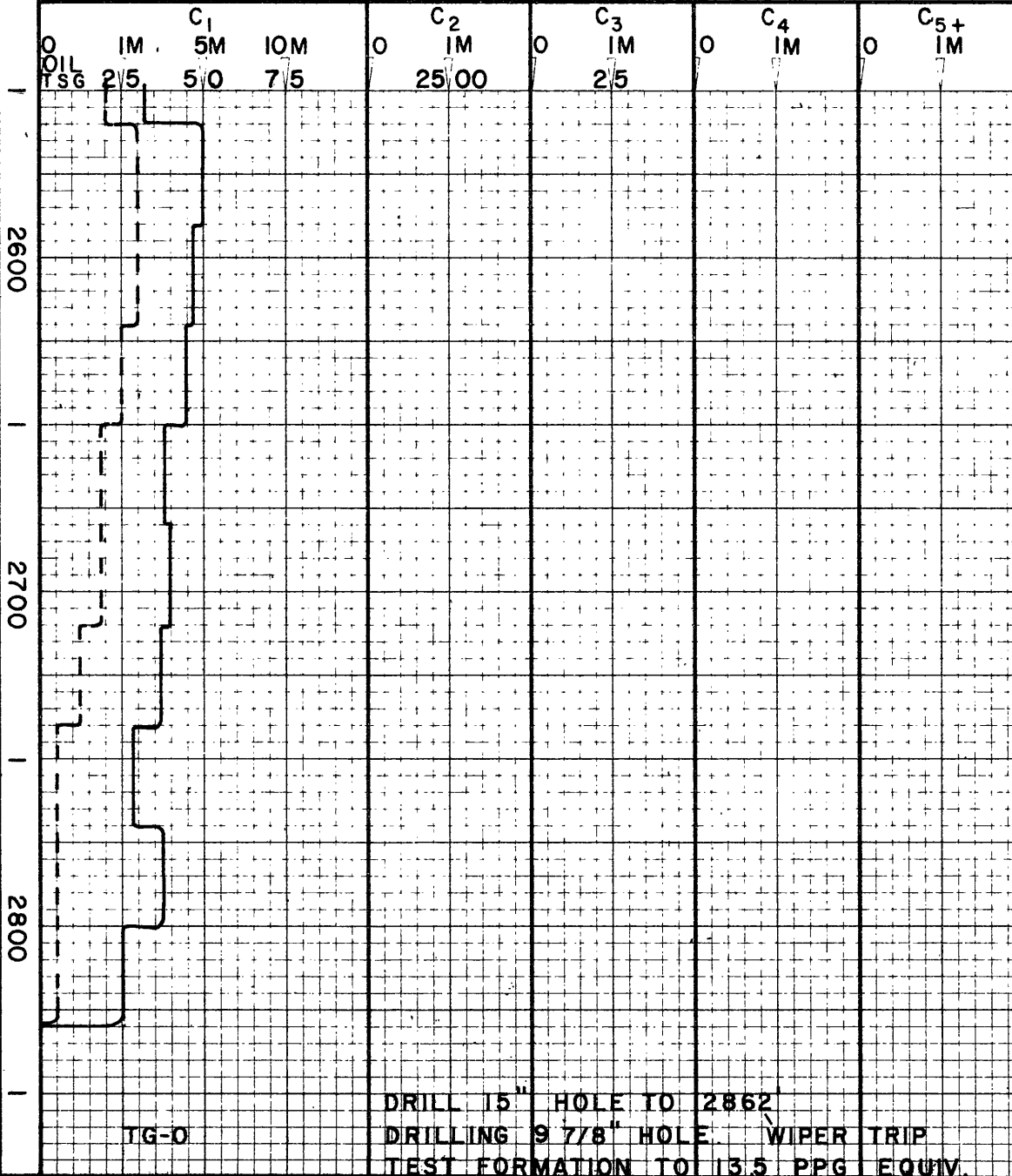
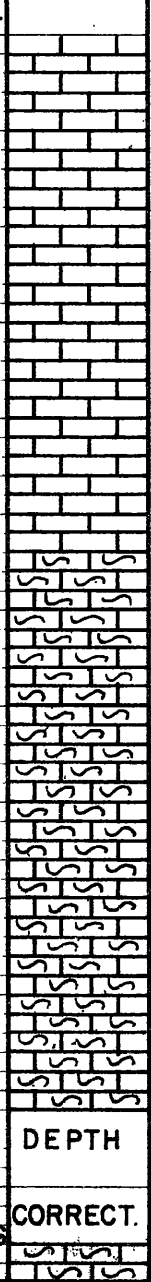
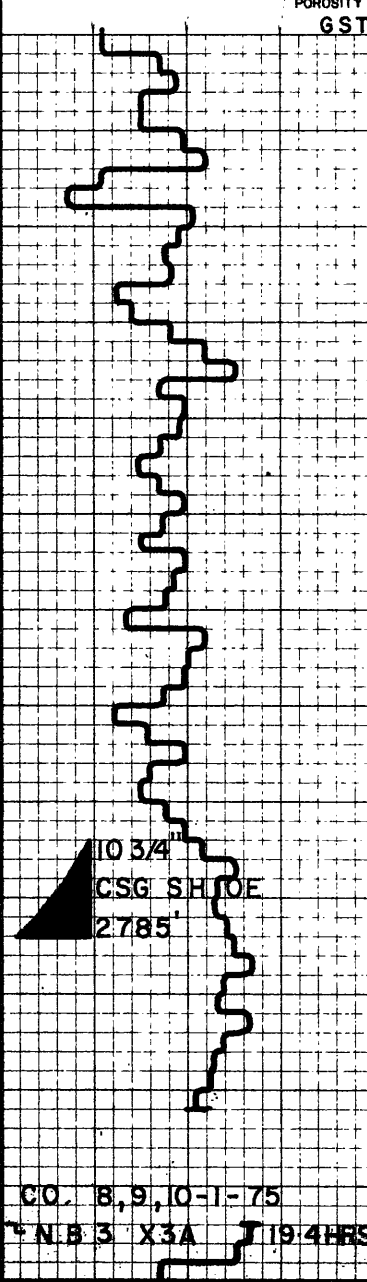
LITHOLOGY
 SAND
 GRANITE WASH
 LIME STONE
 CHERT
 SHALE
 GYP. ANHYDRITE
 DOLOMITE
 LIGNITE

CUTTINGS ANALYSIS
 TOTAL GAS _____
 METHANE _____
 LIQUID HYDROCARBONS (C₆₊) _____

DRILLING RATE
 FT. PER HR. MIN. PER FT.
 300 200 100
 VISUAL POROSITY GST

LITHOLOGY

ppm HYDROCARBONS IN MUD M=1000



CUTTINGS ANALYSIS
 OIL TSG
 CALC. MUDSTONE LIQ. V. SFT GUMMY
 DEPT. NAT. RES & ENV
 PE603512
 RUN E-LOGS.

CO. 8, 9, 10-1-75
 N.B 3 X3A 19.4 HRS
 CORRECT.

DRILL 15" HOLE TO 2862
 DRILLING 9 7/8" HOLE WIPER TRIP
 TEST FORMATION TO 13.5 PPG EQUIV.