



WELL KINGFISH NO 5  
 COMPANY ESSO  
 COUNTY GIPPSLAND BASIN  
 STATE VICTORIA

**LEGEND**  
 DEPTH CORRESPONDS TO DRILL  
 PIPE MEASUREMENTS.  
 NB NEW BIT  
 NCB NEW CORE BIT  
 DST DRILL STEM TEST  
 NR NO RETURNS  
 TG TRIP GAS  
 CO CIRCULATE OUT RETURNS

**LITHOLOGY**  
 SAND  
 GRANITE WASH  
 LIME STONE  
 SHALE  
 GYP ANHYDRITE  
 DOLOMITE

CHERT  
 LIGNITE

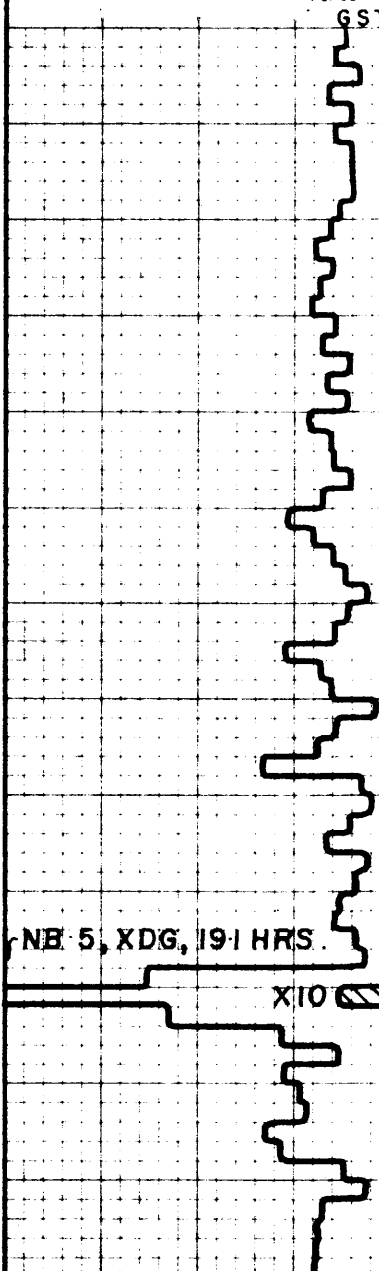
13  
 25

**CUTTINGS ANALYSIS**

TOTAL GAS \_\_\_\_\_  
 METHANE \_\_\_\_\_  
 LIQUID HYDROCARBONS (C<sub>6+</sub>) \_\_\_\_\_ 6+ \_\_\_\_\_

**DRILLING RATE**  
 FT PER HR  MIN PER FT  
 300 200 100

LITHOLOGY



**ppm HYDROCARBONS IN MUD M=1000**

DEPTH (ft)	C <sub>1</sub>			C <sub>2</sub>		C <sub>3</sub>		C <sub>4</sub>		C <sub>5+</sub>	
	0	1M	5M	10M	0	1M	0	1M	0	1M	
4200	0	2.5	5.0	7.5	0	25.00	0	2.5	0	0	0
4300	NO GAS					NO H <sub>2</sub> S					
4400	NO TG										

OIL TSG

MARL: LT GY, V SOFT.  
 SILTST: GY, MOD HD. CALC, CARB. TR: FOSS.

SILTST: GY, SOFT, CALC. FRIABLE.  
 MARL: LT GY, SOFT.

DEPT. NAT. RES & ENV  
  
 PE603493