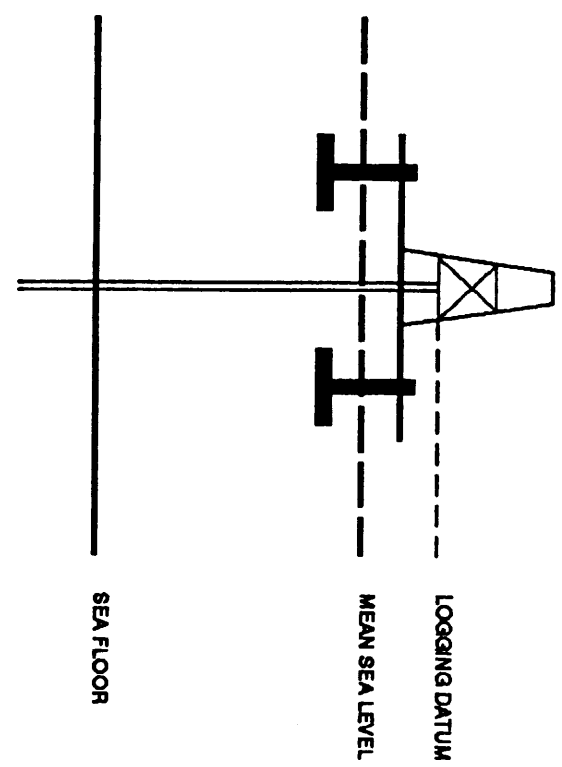




SEISMIC CALIBRATION LOG

(Adjusted Continuous Velocity Log)

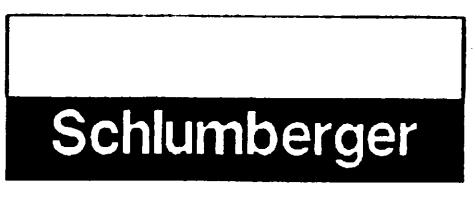
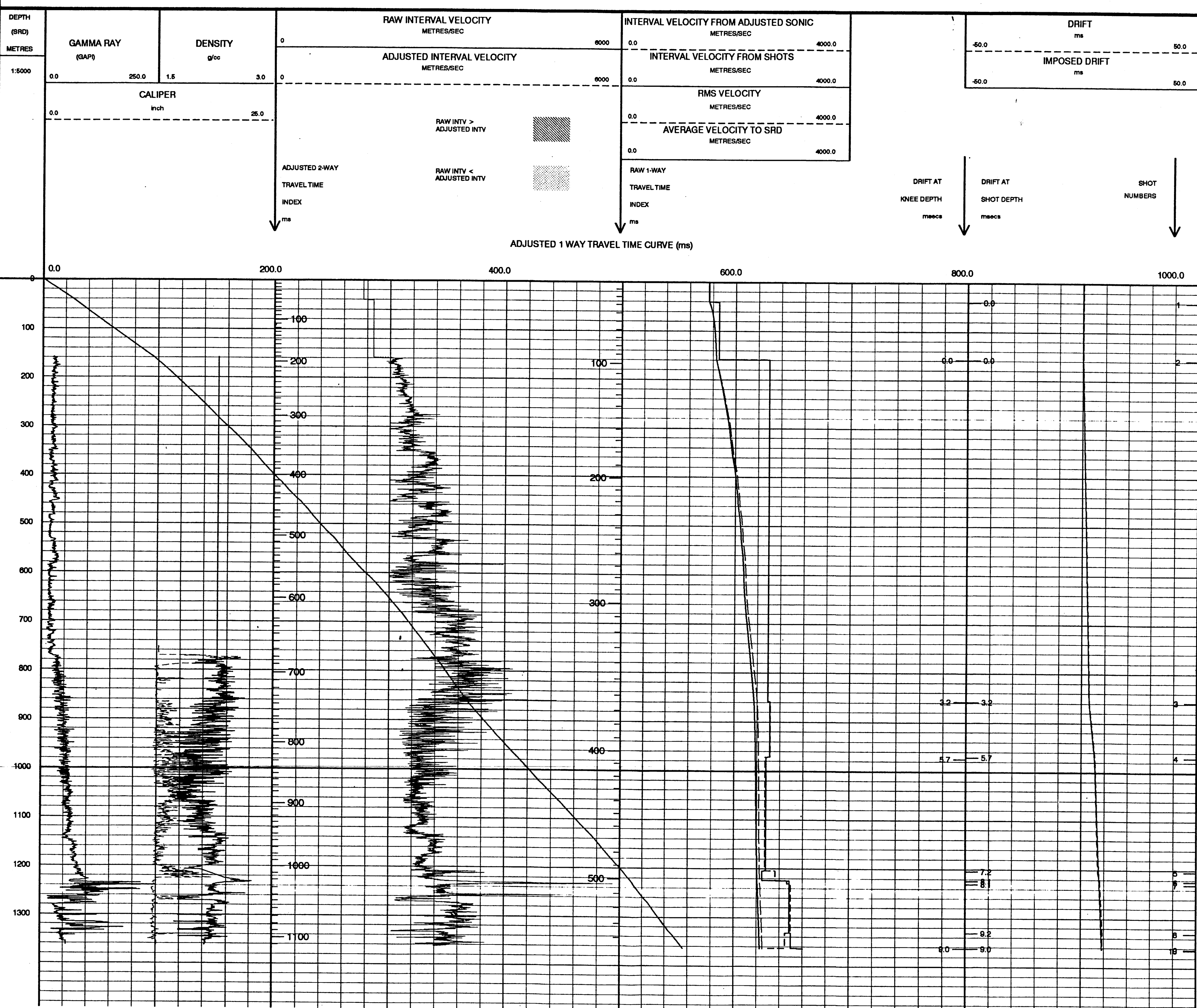
Company: ESSO AUSTRALIA LTD
Well: BLENNY 1
Field: WILDCAT
Country: AUSTRALIA
Reference No: 560798
Date Logged: 7-05-92
Location: 38 47' 3" S
Elevations: KB: 22.00 DF: 21.70 GL: -40.00
Permanent Datum: MSL
Date Processed: 21-5-92
Interval: 1385.00 to 180.00
Logging Datum: 22.00
Sea Level Reference Datum: 0.00
ELEVATION ABOVE MEAN SEA LEVEL
FIELD RECORDING: Engineer: D BUTCH Location: Program Version: 32.4
COMPUTATION: Analyst: T. BOWMAN Centre: STJ Base Unit: 20.0



Total Number of Levels: 7
Depth Reference: SRD
Time Reference: SRD

Run	Date	Tool Type	Bit Size/Depth	Casing Size/Depth	Top Gun Depth	Bottom Gun Depth
1	4-06-82	AS			810 M	167 M
2	7-04-92	AS			1403	762
1	8-06-82	60 M	10 M BELOW MSL	15 M BELOW MSL	143	143
2						

All interpretations are opinions based on inferences from electrical or other measurements and we cannot, and do not guarantee the accuracy or correctness of any interpretations, and we shall not, except in the case of gross or willful negligence on our part, be liable or responsible for any loss, costs, damages or expenses incurred or sustained by anyone resulting from any interpretations made by any of our officers, agents or employees. These interpretations are also subject to Clause 4 of our General Terms and Conditions as set out in our current Price Schedule.



COMPANY ESSO AUSTRALIA LTD
FIELD WILDCAT
WELL BLENNY 1
COUNTRY AUSTRALIA