



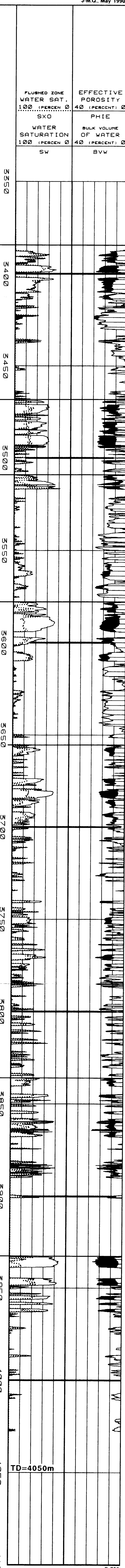
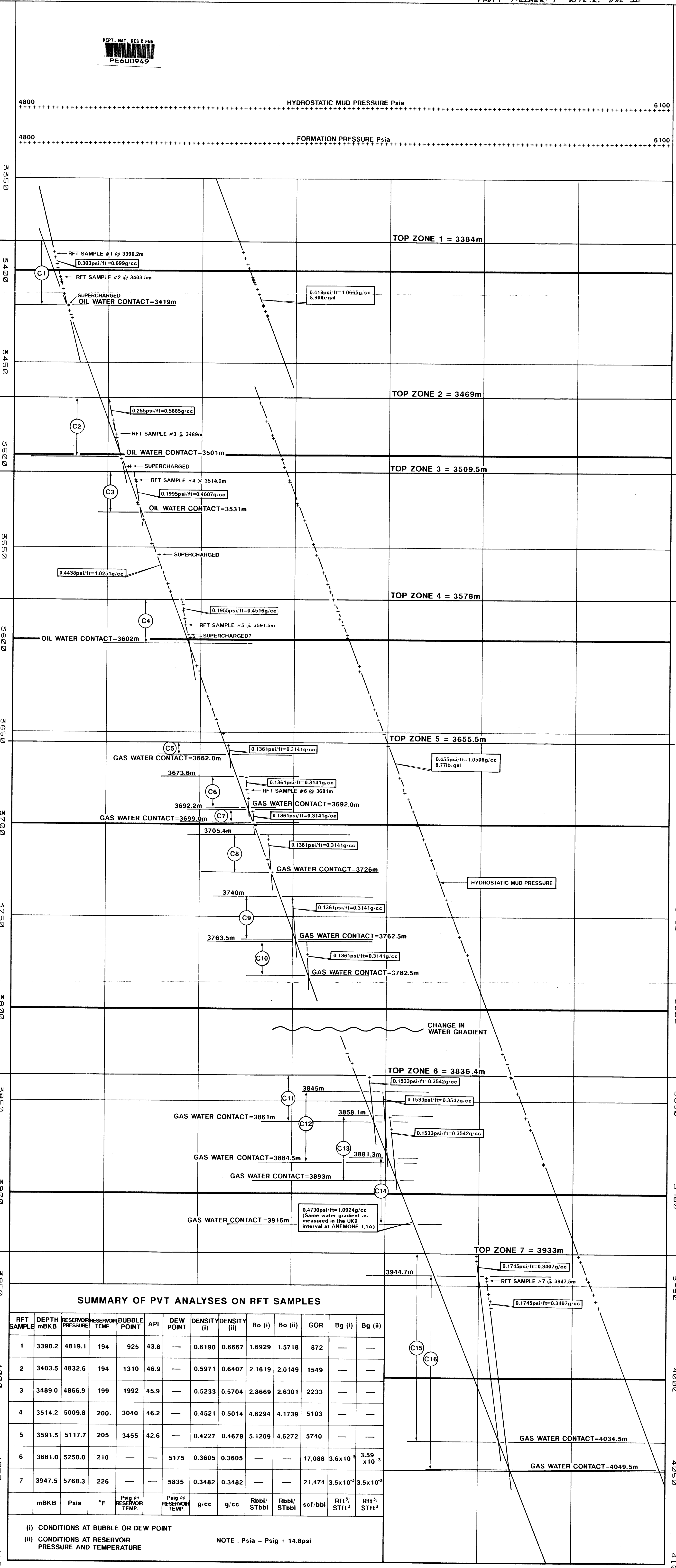
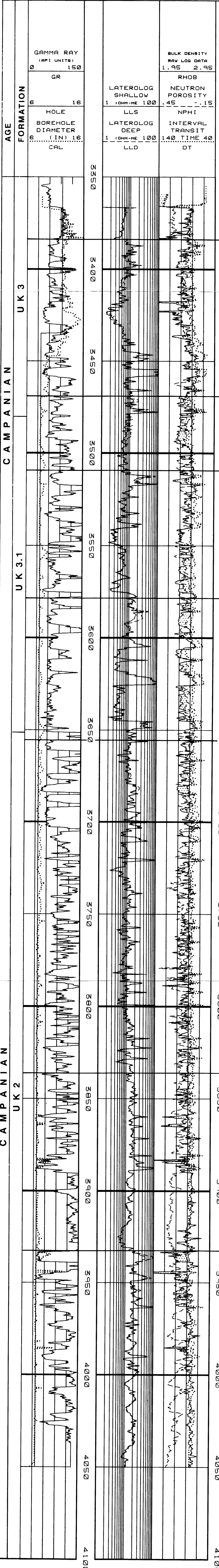
ARCHER-1, RFT RESULTS

Scale 1 : 1000

From Archer-1 W.C.L. Vol II

ENCLOSURE 1

J.M.O. May 1990



SUMMARY OF PVT ANALYSES ON RFT SAMPLES

RFT SAMPLE	DEPTH mKBK	RESERVOIR PRESSURE Psia	RESERVOIR TEMP. °F	BUBBLE POINT Psig @ RESERVOIR TEMP.	API	DEW POINT Psig @ RESERVOIR TEMP.	DENSITY (i) g/cc	DENSITY (ii) g/cc	Bo (i)	Bo (ii)	GOR	Bg (i)	Bg (ii)
1	3390.2	4819.1	194	925	43.8	—	0.6190	0.6667	1.6929	1.5718	872	—	—
2	3403.5	4832.6	194	1310	46.9	—	0.5971	0.6407	2.1619	2.0149	1549	—	—
3	3489.0	4866.9	199	1992	45.9	—	0.5233	0.5704	2.8669	2.6301	2233	—	—
4	3514.2	5009.8	200	3040	46.2	—	0.4521	0.5014	4.6294	4.1739	5103	—	—
5	3591.5	5117.7	205	3455	42.6	—	0.4227	0.4678	5.1209	4.6272	5740	—	—
6	3681.0	5250.0	210	—	—	5175	0.3605	0.3605	—	—	17,088	3.6 x 10 ⁻⁵	3.59 x 10 ⁻³
7	3947.5	5768.3	226	—	—	5835	0.3482	0.3482	—	—	21,474	3.5 x 10 ⁻³	3.5 x 10 ⁻³
	mKBK	Psia	°F	Psig @ RESERVOIR TEMP.		Psig @ RESERVOIR TEMP.	g/cc	g/cc	Rbbl/STbbl	Rbbl/STbbl	scf/bbl	Rft ³ /STft ³	Rft ³ /STft ³

(i) CONDITIONS AT BUBBLE OR DEW POINT
(ii) CONDITIONS AT RESERVOIR PRESSURE AND TEMPERATURE

NOTE : Psia = Psig + 14.8psi