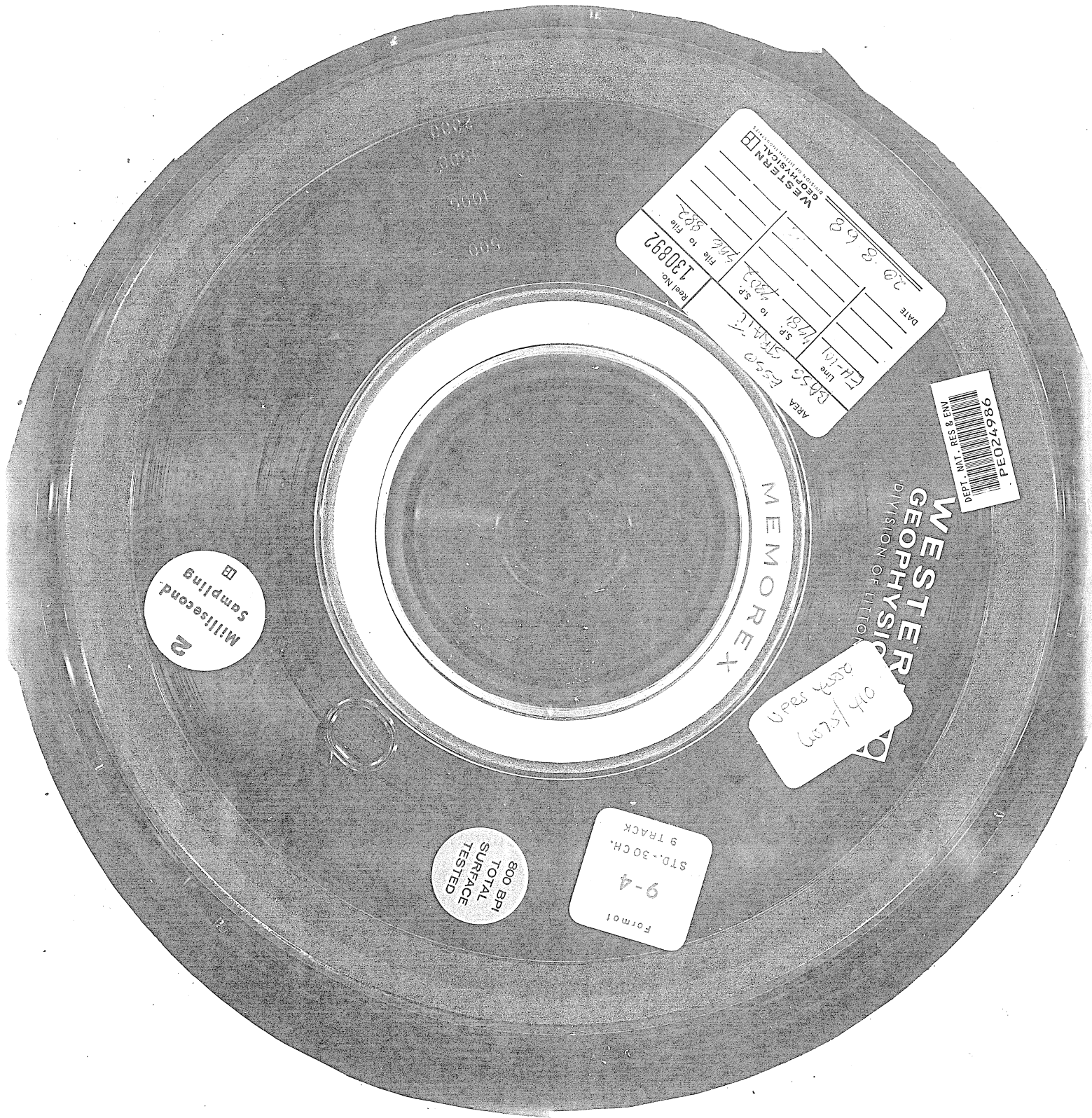


566096



WESTERN GEOPHYSICAL DIVISION OF LITTON	
DATE	30. 8. 62
Line	ET-111
AREA	BS56
S.P. to S.P.	1781 to 1782
S.P. to File	1782 to 130892
Keep No.	130892

DEPT. NAT. RES. & ENV.
PE024986

WESTERN GEOPHYSICAL
DIVISION OF LITTON

Handwritten note: 015/5670
2003 887

Millisecond Sampling
2

800 BPI
TOTAL
SURFACE
TESTED

Formel
9-4
STD.-30CH.
9 TRACK