

565457

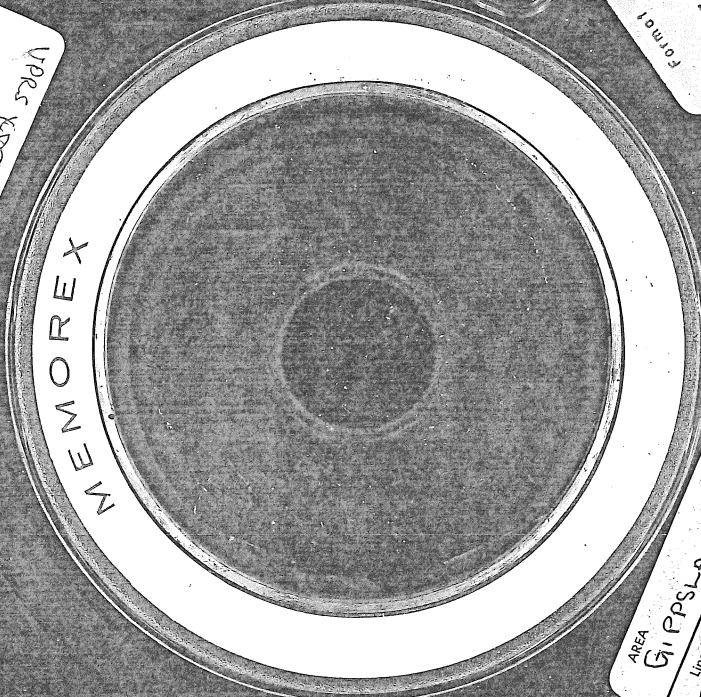
800 BPI
TOTAL
SURFACE
TESTED

Form 1
9-4
STD-30 CH
9 TRACK

VPES K202
6/25/68

DEPT. NAT. RES & ENV
PE024594

WESTERN
GEOPHYSICAL
DIVISION OF LITTON INDUSTRIES



MEMOREX

AREA GIPPSLAND	Reel No. 130197	File No. 740 887
Line 84	to S.P. 101	to File
DATE 2 MAY 68	WESTERN GEOPHYSICAL DIVISION OF LITTON INDUSTRIES	