

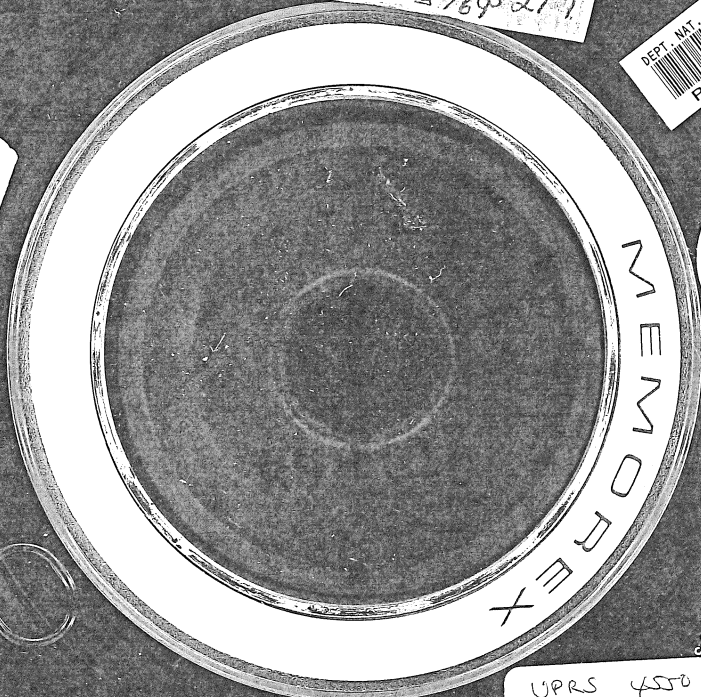
569101

ESSO GIFFSLAND  
REEL #8853  
LINE 9A-281  
FILZ 498 TO ~~822~~ 1020  
S. P. 2.61-TO 8277  
DATE 5/3/89

DEPT. MNT. RES. & ENV.  
PE027422

M13

2  
Millisecond  
Sampling



WESTERN  
GEOPHYSICAL  
DIVISION OF LITTON INDUS.

UPRS 450  
6081/295

800 BPI  
TOTAL  
SURFACE  
TESTED