



GEOGRAM*

(Synthetic Seismogram)

* A Mark of Schlumberger

Company: ESSO AUSTRALIA LTD
Well: SWEETLIPS - 1
Field: WILDCAT
Country: AUSTRALIA
Reference No: 56472 Interval: 185000 to 80000
Date Logged: 10/8/89 Date Processed: 14/9/89
Location: 038 05'47.30" S 148 02'08.66" E
Elevations: KB: 2100 DF: 20.70 GL: -62.00
Permanent Datum: MSL Depth Units: METRES

LOG INFORMATION

FIELD RECORDING: Engineer: H. HENDRA Location: Program Version: 322
COMPUTATION: Analyst: ZKATELIS Centre: SVJ Baseline: 16.11X3
ELEVATION ABOVE MEAN SEA LEVEL
Logging Datum: 2100
Seismic Reference Datum: 000
Sonic Calibration By Check Shots: YES Sonic Edited By Analyst: YES
Two-Way Time Sample Interval: 2 ms Environment:
True Vertical Depth Corrections Applied:
Source of True Vertical Depth Data:
Maximum Hole Deviation: 0

Run	Date	Tool Type	Bit Size/Depth	Casing Size/Depth	Top Depth	Bottom Depth
2	10-08-89	Gun Offset 45.0 M	Hydro Offset 45.0	Gun Elevation 3.0 M BELOW SBD	Hydro Elevation 15 M BELOW SBD	Gun Azimuth 0 Hydro Azimuth 0

GEOGRAM MODEL ASSUMPTIONS

Equal time slice model of horizontal plane layers.
Plane acoustic waves at normal incidence.
No intrinsic attenuation.

POLARITY

An upgoing wave, reflected by an increase in acoustic impedance with depth, is displayed as a white trough under normal polarity.

SIGNATURES

All signatures displayed in the Geogram results correspond to a wavelet convolved with a reflection coefficient of -0.5 (A decrease in acoustic impedance with depth).

REMARKS

The well name, location and borehole reference data were furnished by the customer.

All interpretations are opinions based on inferences from electrical or other measurements and we cannot, and do not guarantee the accuracy or correctness of any interpretations, and we shall not, except in the case of gross or willful negligence on our part, be liable or responsible for any loss, costs, damages or expenses incurred or sustained by anyone resulting from any interpretations made by any of our officers, agents or employees. These interpretations are also subject to Clause 4 of our General Terms and Conditions as set out in our current Price Schedule.

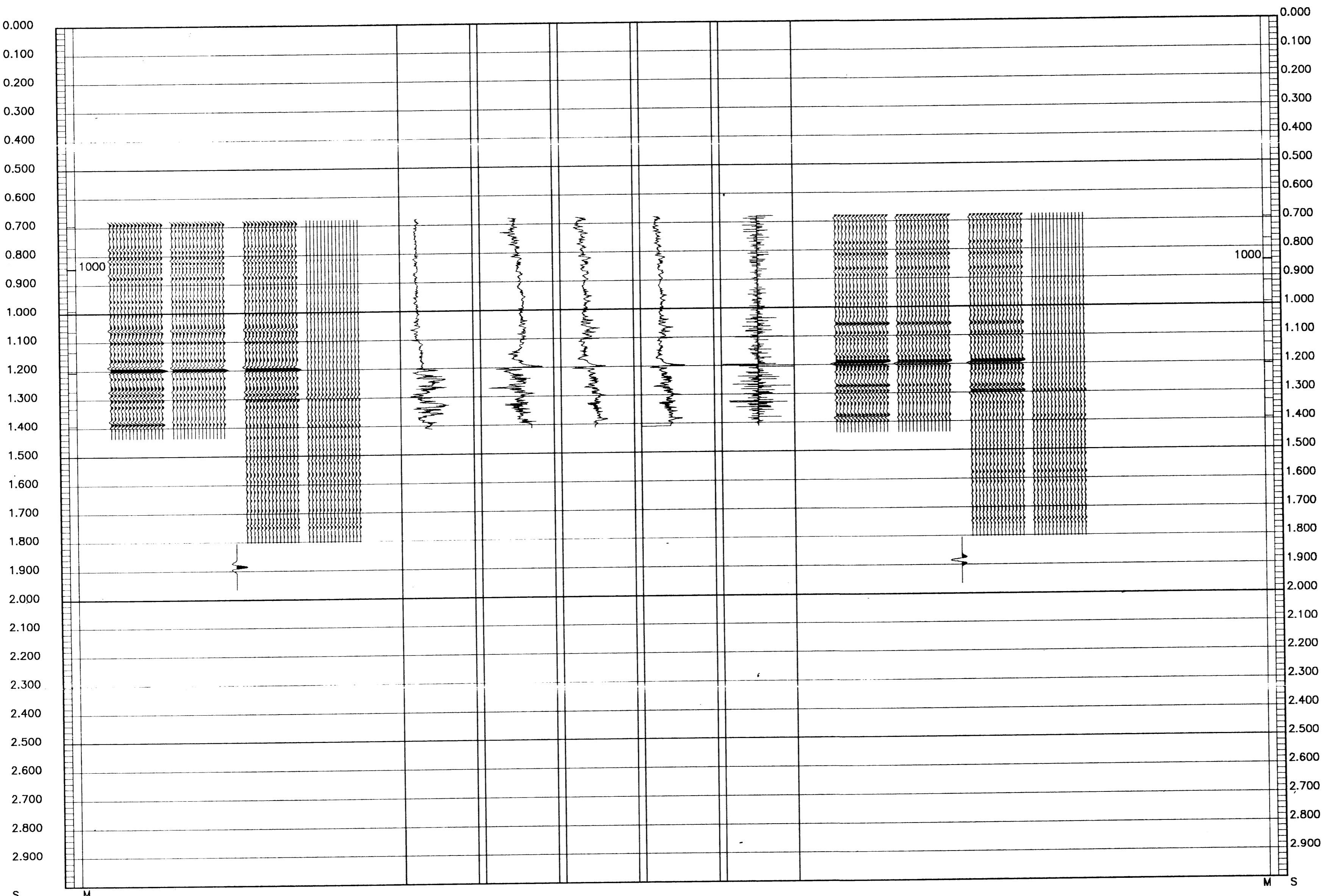
CLIENT = ESSO AUSTRALIA LTD
FIELD = WILDCAT
WELL = SWEETLIPS - 1

** GEOGRAM **

35 HERTZ ZERO PHASE
RICKER WAVELET

SWEETLIPS 1

MULTIPLES ONLY REVERSE POLARITY
PRIMARIES AND MULTIPLES REVERSE POLARITY
PRIMARIES WITH TRANSMISSION LOSS REVERSE POLARITY
PRIMARIES REVERSE POLARITY
REFLECTION
ACOUSTIC IMPEDANCE
SONIC
DENSITY
GAMMA RAY
MULTIPLES ONLY NORMAL POLARITY
PRIMARIES AND MULTIPLES NORMAL POLARITY
PRIMARIES WITH TRANSMISSION LOSS NORMAL POLARITY
PRIMARIES NORMAL POLARITY



COMPANY ESSO AUSTRALIA LTD
FIELD WILDCAT
WELL SWEETLIPS - 1
COUNTRY AUSTRALIA