

SEISMIC CALIBRATION LOG

(Adjusted Continuous Velocity Log)

Company: ESSO AUSTRALIA LTD

Well: SWEETLIPS - 1

Field: WILDCAT

Country: AUSTRALIA

Reference No: 56472 Interval: 1850.00 to 8000.00

Date Logged: 10/8/89 Date Processed: 14/9/89

Location: 038 064730° S 148 020866° E

Elevations: KB: 2100 DF: 2070 GL: -5200

Permanent Datum: MSL Depth Units: METRES

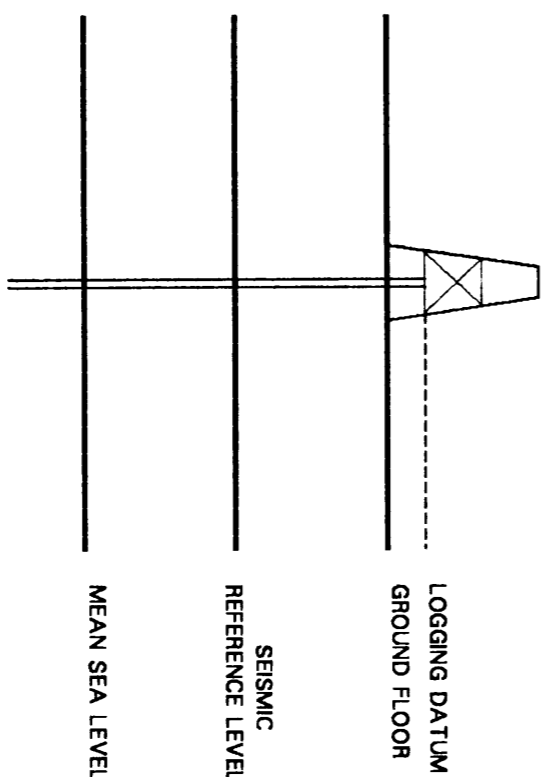
FIELD RECORDING: Engineer: H. HENDRA Location: Program Version: 322

COMPUTATION: Analyst: ZATELUS Centre: SVJ Baseline: 1811X3

ELEVATION ABOVE MEAN SEA LEVEL

Logging Datum: 2100

Seismic Reference Datum: 0.00



Total Number of Levels: 10

Depth Reference: SHD

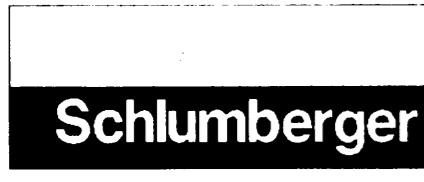
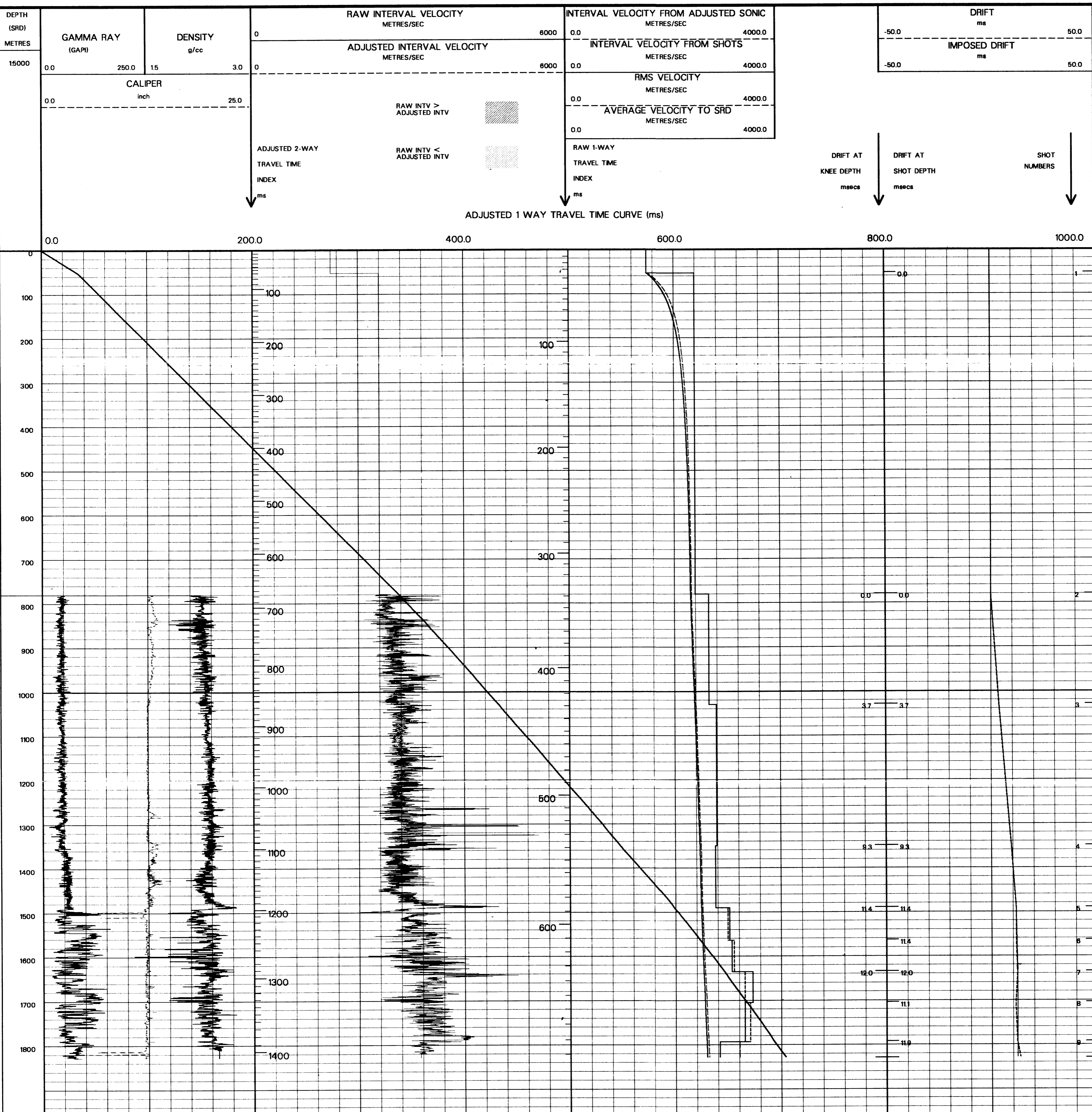
Time Reference: SHD

Run	Date	Tool Type	Bit Size/Depth	Casing Size/Depth	Top Depth	Bottom Depth	
1		Gun	Hydro Offset	45.0	800.0	1850.0	
2	10-08-89	Gun	Hydro Offset	45.0	3.0 M BELOW SHD	15 M BELOW SHD	0

REMARKS

The well name, location and borehole reference data were furnished by the customer.

All interpretations are opinions based on inferences from electrical or other measurements and we cannot, and do not guarantee the accuracy or correctness of any interpretations, and we shall not, except in the case of gross or willful negligence on our part, be liable or responsible for any loss, costs, damages or expenses incurred or sustained by anyone resulting from any interpretations made by any of our officers, agents or employees. These interpretations are also subject to Clause 4 of our General Terms and Conditions as set out in our current Price Schedule.



COMPANY ESSO AUSTRALIA LTD
FIELD WILDCAT
WELL SWEETLIPS - 1
COUNTRY AUSTRALIA