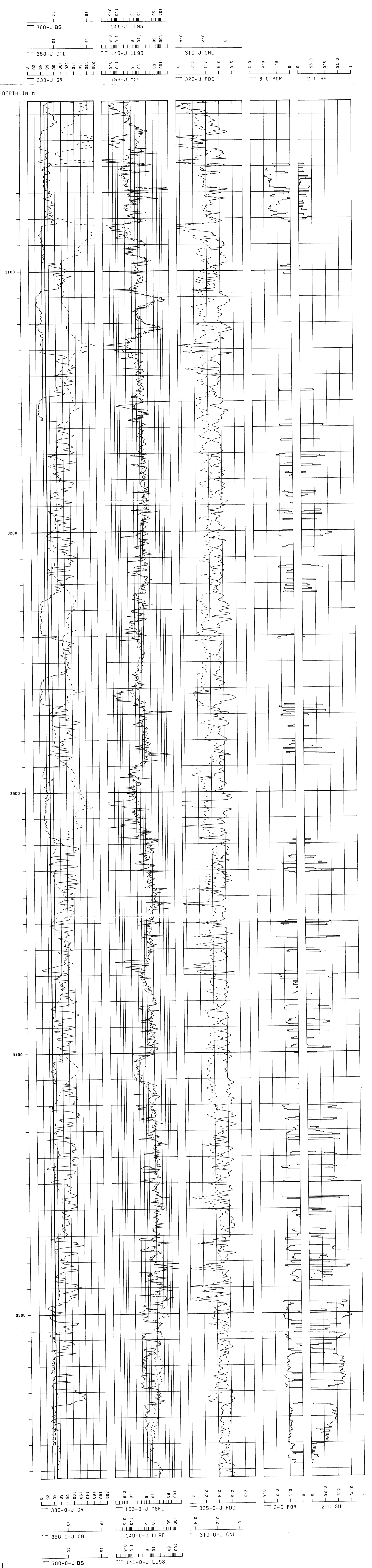
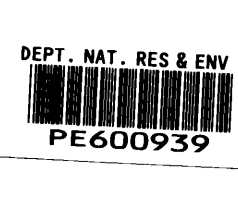


# PETROPHYSICAL EVALUATION SUMMARY

**WELL** : GUMMY-1  
**RESERVOIR** : GOLDEN BEACH  
**INTERVAL** : 3035 - 3563m BDF  
**DATE** : 6/90  
**VERTICAL SCALE** : 1 : 500



## PETROPHYSICAL SUMMARY GOLDEN BEACH FORMATION GUMMY-1

INTERVAL m BDF	GROSS THICKNESS (m)	NET SST			NET RESERVOIR*				NET PAY**				
		h	N/G	AVG $\phi$	AVG SH	h	N/G	AVG $\phi$	AVG SH	h	N/G	AVG $\phi$	AVG SH
<b>GLDN BCH</b>													
3035-3563	528	141	.27	.09	.33	52	.10	.13	.37	27.8	.05	.12	.58
<b>(TOTAL)</b>													
3035-3187	152	28	.18	.10	.10	13	.09	.15	.08	-	-	-	-
3187-3224	37	10	.27	.08	.29	3	.08	.11	.42	1.2	.03	.11	.51
3224-3420	196	25	.13	.08	.31	6	.03	.12	.38	4.3	.02	.12	.48
3420-3495	75	28	.37	.08	.43	8	.11	.13	.54	6.4	.09	.13	.58
3495-3550	55	43	.78	.10	.49	20	.36	.11	.55	15.9	.29	.12	.62

\* POROSITY CUTOFF: 10%  
 \*\* SG CUTOFF : 40%

### RFT SAMPLE DATA

1. 3201.5m (6 GALLON CHAMBER)  
 OPENING PRESSURE 2430 PSI (9°C)  
  
 GAS 157.9 FT<sup>3</sup>  
 CONDENSATE 0.95 L  
 FILTRATE 2 L (Rm 0.25512 AT 15°C CF 0.219 FOR MUD FILTRATE)  
  
 GAS COMPOSITION (%)
 

C <sub>1</sub>	91.2
C <sub>2</sub>	5.9
C <sub>3</sub>	2.4
iC <sub>4</sub>	0.1
nC <sub>4</sub>	0.5
  
2. 3421.5 (2.75 GALLON CHAMBER)  
 OPENING PRESSURE 550 PSI (9°C)  
  
 GAS 0.75 FT<sup>3</sup>  
 CONDENSATE -LIGHT OIL SCUM OBSERVED  
 FILTRATE 9.25L (Rm 0.212 AT 15°C CF 0.219 FOR MUD FILTRATE)  
  
 GAS COMPOSITION (%)
 

C <sub>1</sub>	83
C <sub>2</sub>	9.9
C <sub>3</sub>	5.6
iC <sub>4</sub>	0.5
nC <sub>4</sub>	0.9