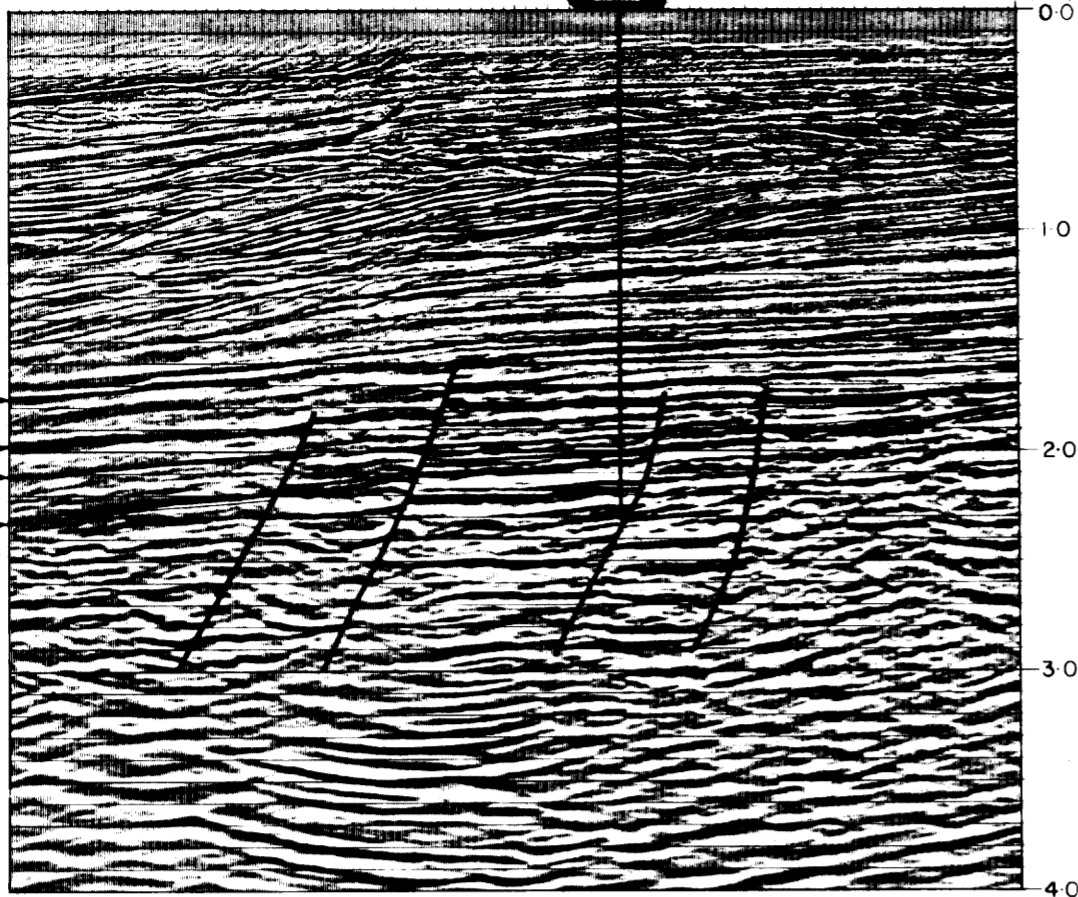


LINE GS81-71A

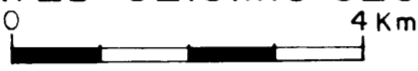
S

MANTA-I

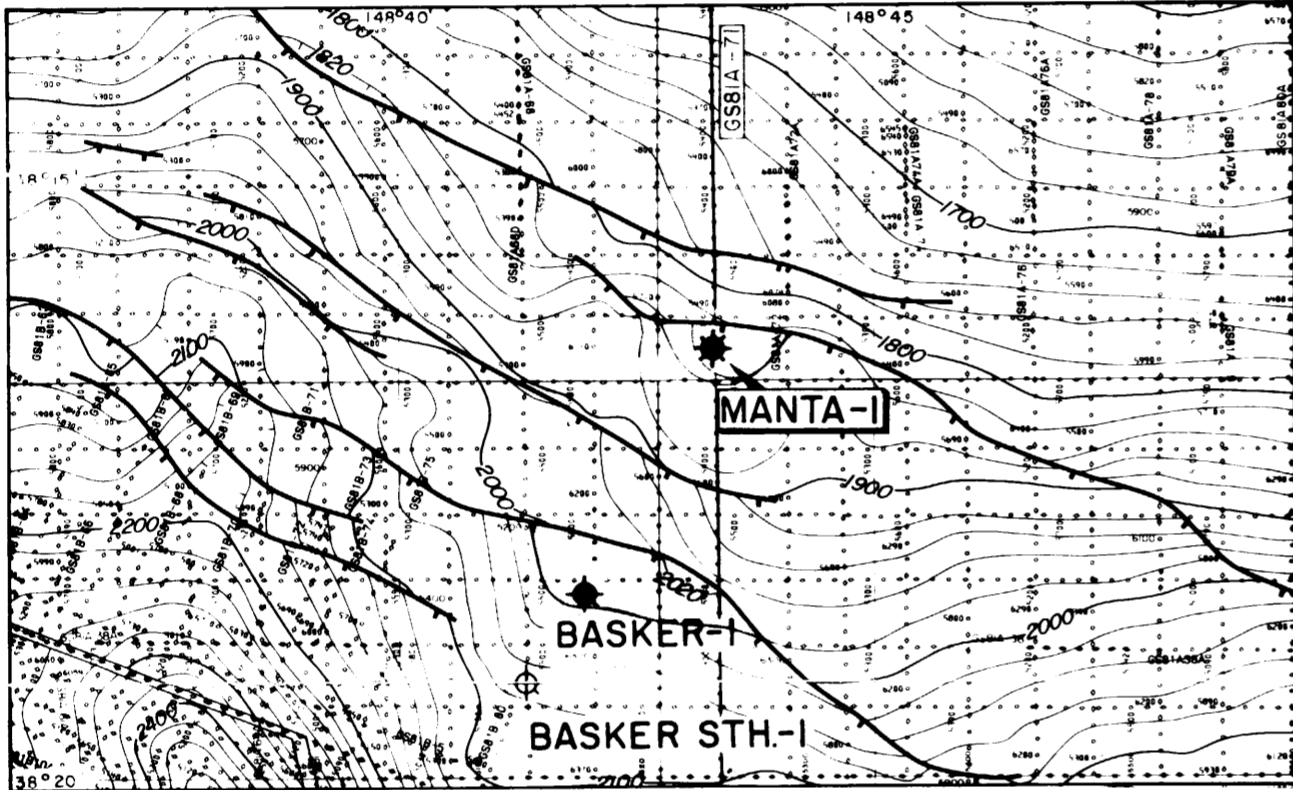
N



MIGRATED SEISMIC SECTION



TOP LATROBE
COARSE CLASTICS
INTRA
MAASTRICHTIAN
INTRA CAMPANIAN
LOWER CAMPANIAN
TOP OF VOLCANICS



MIGRATED TIME CONTOUR MAP
INTRA-CAMPANIAN MARKER



Possible extent of hydrocarbons
Contour Interval 20 ms

SUMMARY

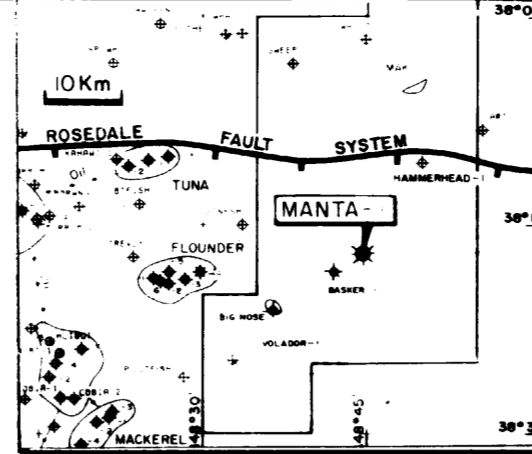
LOCATION : 15km SW of Hammerhead -1 and 3.5km NE of Basker -1 at SP. 5518 on seismic line GS81A - 71.

TRAP AND OBJECTIVE : Fault trap within the Campanian Latrobe Group. The primary objective of the well comprised fluvial/alluvial sandstones similar to those which contained hydrocarbons in Basker -1.

RESULTS : Twelve oil and gas bearing sandstones were found between the intra and lower Campanian seismic markers. These were generally 3-5m thick, with one up to 17m thick. Within the volcanic sequence a 54m sandstone at 3274m contained gas and some condensate. Petrophysical evaluation indicates a total of 28.3m of net oil sand and 73.1 m net gas sand.

SOURCES OF DATA

DATE	AUTHOR	TITLE	UPDATES
1981	SDA	48 FOLD SEISMIC SURVEY (GS81A) 1 x 1 km	



SHELL - AUSTRALIA E. & P. OIL AND GAS.
GIPPSLAND BASIN
MANTA - I NFW
PROGRESS SUMMARY SHEET
CO-ORDS: LAT. 38°16'27.31" S ELEVATION DF 25 m
LONG. 148°43'19.69" E WATER DEPTH 133 m
PERMIT No. VIC/P19 TOTAL DEPTH 3572 m
STATE VICTORIA RIG: FORAMER NYMPHEA
OPERATOR: SHELL (40%) SPUDED 8/1/84
PARTNERS: NEWS(20%) TNT(20%) COMPLETED 20/3/84
CRUSADER(15%) MINICORP(5%) TYPE COMP P 8 A

DEPTH BDF FEET	TIME STRATIGRAPHY	CASING ENVIRON. CORES SWS	LITHOLOGY & INDICATIONS	ROCK STRATIGRAPHY REGO CODES	SEIS. MKR.	LOGS
0			SEA LEVEL 25 m			
10			SEA FLOOR 158 m			
20		30"				
1000		204m				
2000	PLIOCENE	20"				
3000	TO	646m				
4000	MIocene		Mrl, qe, foss intbd with calcarenite			
5000	TERTIARY					
6000						
7000						
8000						
9000						
10000						
11000						
12000						
13000						
14000						
15000						

PRODUCTION TESTING

TEST 1 (3290-3299, 3309-3315m)

CHOKE SIZE	GAS		CONDENSATE	
	MMSCF/D	SG	BBL/D	API
3/8"	9.02	0.678	591	55
1/2"	13.00	0.673	800	56
3/8"	18.00	0.678	999	55

TEST 2 (2755-2761m)

CHOKE SIZE	GAS		CONDENSATE	
	MMSCF/D	SG	BBL/D	API
3/8"	1.779	0.782	1474	41.7
1/2"	2.764	0.764	2895	42.3
3/4"	4.518	0.742	5157	42.2

TEST 3 (2615-2618, 2623-2626m)

CHOKE SIZE	GAS		CONDENSATE	
	MMSCF/D	SG	BBL/D	API
3/8"	1.703	0.770	1782	43.4
3/4"	4.500	0.768	5160	43.4
	5.134	0.765	6360	43.2

Oil and Gas Division
22 OCT 1984
Completion Report Vol II