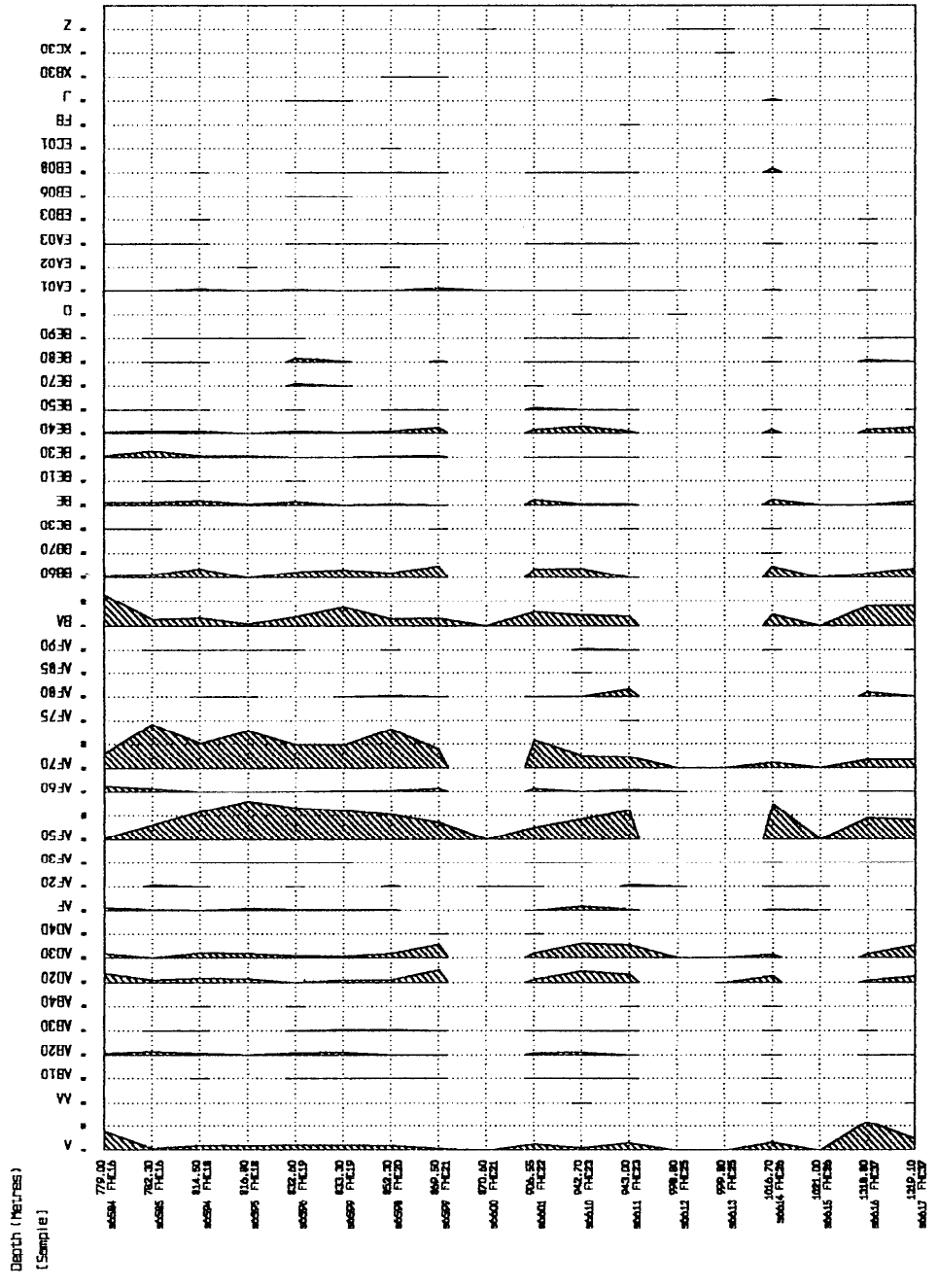


# Mocambo #11 Spore/Pollen Distribution Chart (Counts)

## Phyllo- Group Abundance

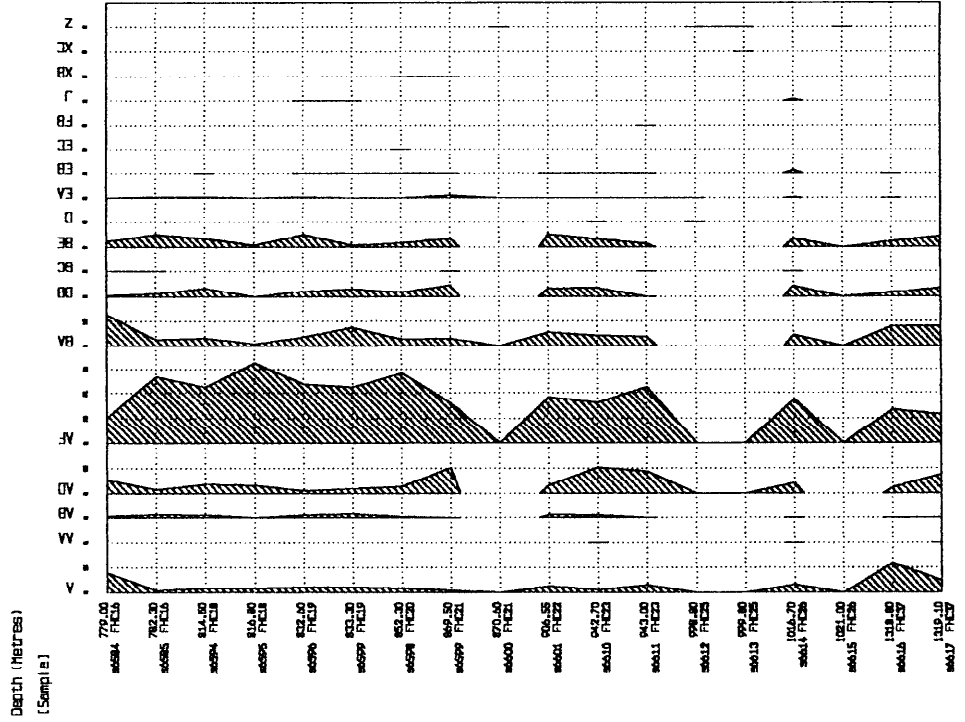
- Land Plant Spores
- CRYPTOBANS - unclassified
- ? Bryophyta
- Hepaticeae
- Anthocerotae
- Sphagnidae
- Lycopodiaceae
- Setimniaceae
- Isosporales
- PTERIDIUM
- Extinct Ferns
- Gymnosperms - unclassified
- Dawsoniales
- Schizomorphales
- Calamitales
- Hymenophyllaceae
- Gleicheniales
- Polypodiaceae
- Hydropteridales
- GYMNOSPERMS - unclassified
- Peltaspermae/Cortisporaceae
- Daytoniales
- Cycadales
- CONIFEROPHYTES
- ? Conifers
- Dinopodiaceae
- Podocarpaceae
- Araucariaceae
- Taxodiaceae/Taxaceae
- Pinaceae
- Fungi + Protospores
- Fungal Spores
- Leiosphaerids
- Trematolids
- Cyatholiparids
- Butyraceae
- Zygophyceae - Sphryxera
- Zygnematales
- AFFINITY UNKNOWN General
- MICROSTRIDIUM GROUP
- Miscellanea
- PALAEZOIC
- ECOLOGICAL GROUP



APG Consultants  
Palo Alto, CA

# Mocambo #11 Spore/Pollen Distribution Chart (Counts)

- Land Plant Spores
- CRYPTOBANS - unclassified
- BRYOPHYTES
- LYCOPHYTES
- PTERIDIUM
- Gymnosperms - unclassified
- PERIDOSPOROPHYTES
- CYCADOPHYTES
- CONIFEROPHYTES
- Fungal Spores
- PHASIDOPHYTES
- CHLOROPHYTES
- AFFINITY UNKNOWN
- MICROSTRIDIUM GROUP
- Miscellanea
- RECORDED FUNGI
- CONTAMINATES
- ECOLOGICAL GROUP



# Mocambo #11 Spore/Pollen Distribution Chart (Counts)

DEPT. NAT. RES. & ENV.  
PE800762

- Land Plant Spores
- Dryopteroides Pollen
- Fungal Spores
- Algal Spores
- Spineae Acritarchs
- Miscellanea
- NON-ECOLOGICAL
- ECOLOGICAL

