

GEOGRAM*

(Synthetic Seismogram)

* A Mark of Schlumberger

Company: BEACH PETROLEUM N.L.
 Well: PRINCES - 1
 Field: WILDCAT
 Country: AUSTRALIA
 Reference No: 560408
 Date Logged: 04/04/98
 Location: 038 29' 32" S 142 59' 20" E
 Elevation: KB: 15.5 M DE: 15.4 M GL: 109.5 M
 Permanent Datum: MSL
 Depth Unit: METRES

LOG INFORMATION
 Computer: G. BOONE
 Location: G.S. Program Version: 2.2.2A
 COMPLETION: ANALYST: M. BANKS
 ELEVATION ABOVE MEAN SEA LEVEL: 15.5 M
 Logging Datum: 15.5 M
 Seismic Reference Datum: 150.0 M
 Ground Floor: 109.5 M
 Sonic Calibration by Check Shots: YES
 Sonic Edited by Analyst: YES
 Two-Way Time Sample Interval: 2 ms
 Environment: onshore

Tie Vertical Depth Corrections Applied: NO
 Section of Log Vertical Depth Date: No section of log available

Run	Date	Type	Bit Size / Depth	Casing Size / Depth	Top / Depth	Bottom / Depth
1	06/02/98	815	8 1/2" @ 1000 M	8 0/8" @ 201 M	201 M	1050 M

Equal time area model of horizontal plane layers.
 Plane acoustic waves at normal incidence.
 No intrinsic attenuation.

POLARITY
 An ongoing wave, reflected by an increase in acoustic impedance with depth, is displayed as a white trough under normal polarity.

SKINNYTIES
 All signatures displayed in the Geogram results correspond to a waveform recorded with a reflection coefficient of -0.5 (A decrease in acoustic impedance with depth).

REMARKS
 Sonic log interval 25 - 140 metres below KB
 Density log interval 55 - 140 metres below KB
 Time Scale = 5 s/100m

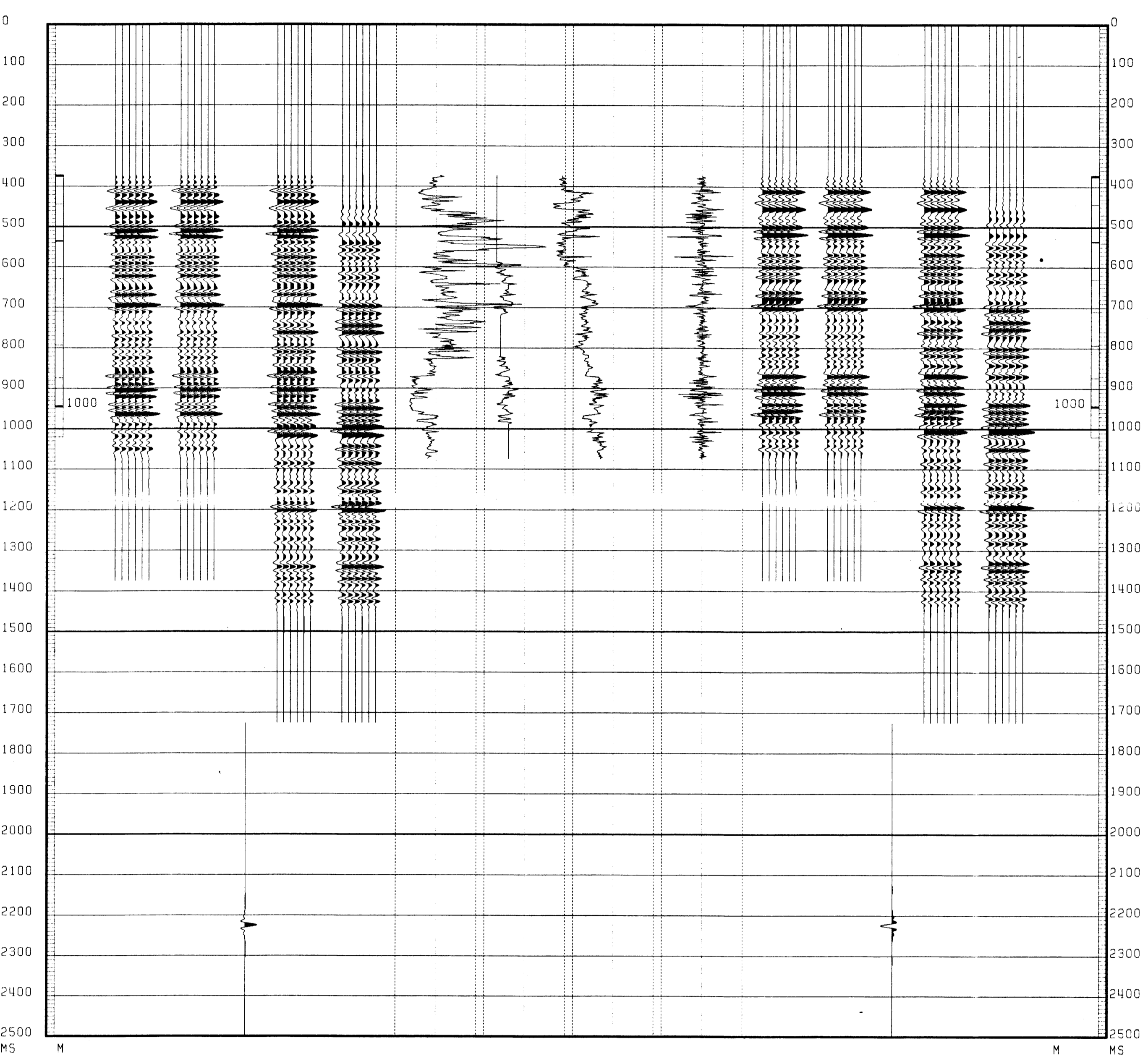
The well name, location and borehole reference data were furnished by the customer.

All interpretations are opinions based on inferences from electrical or other measurements and we cannot, and do not guarantee the accuracy or correctness of any interpretations, and we shall not, except in the case of gross or willful negligence on our part, be liable or responsible for any loss, costs, damages or expenses incurred or sustained by anyone resulting from any interpretations made by any of our officers, agents or employees. These interpretations are also subject to Clause 4 of our General Terms and Conditions as set out in our current Price Schedule.

GEOGRAM FROM WST BUTTERWORTH FILTER WAVELET 12-80 HERTZ (48 DB/OCTAVE) NORMAL & REVERSE POLARITY

PRINCES - 1

MULTIPLES ONLY REVERSE POLARITY
 PRIMARIES AND MULTIPLES REVERSE POLARITY
 STRETCHER CORRECTIONS TO REFLECT COEFF. OF -0.5
 PRIMARIES WITH TRANSMISSION LOSS REVERSE POLARITY
 PRIMARIES REVERSE POLARITY
 REFLECTION
 SONIC
 DENSITY
 GRAM RBT
 MULTIPLES ONLY NORMAL POLARITY
 PRIMARIES AND MULTIPLES NORMAL POLARITY
 STRETCHER CORRECTIONS TO REFLECT COEFF. OF -0.5
 PRIMARIES WITH TRANSMISSION LOSS NORMAL POLARITY
 PRIMARIES NORMAL POLARITY

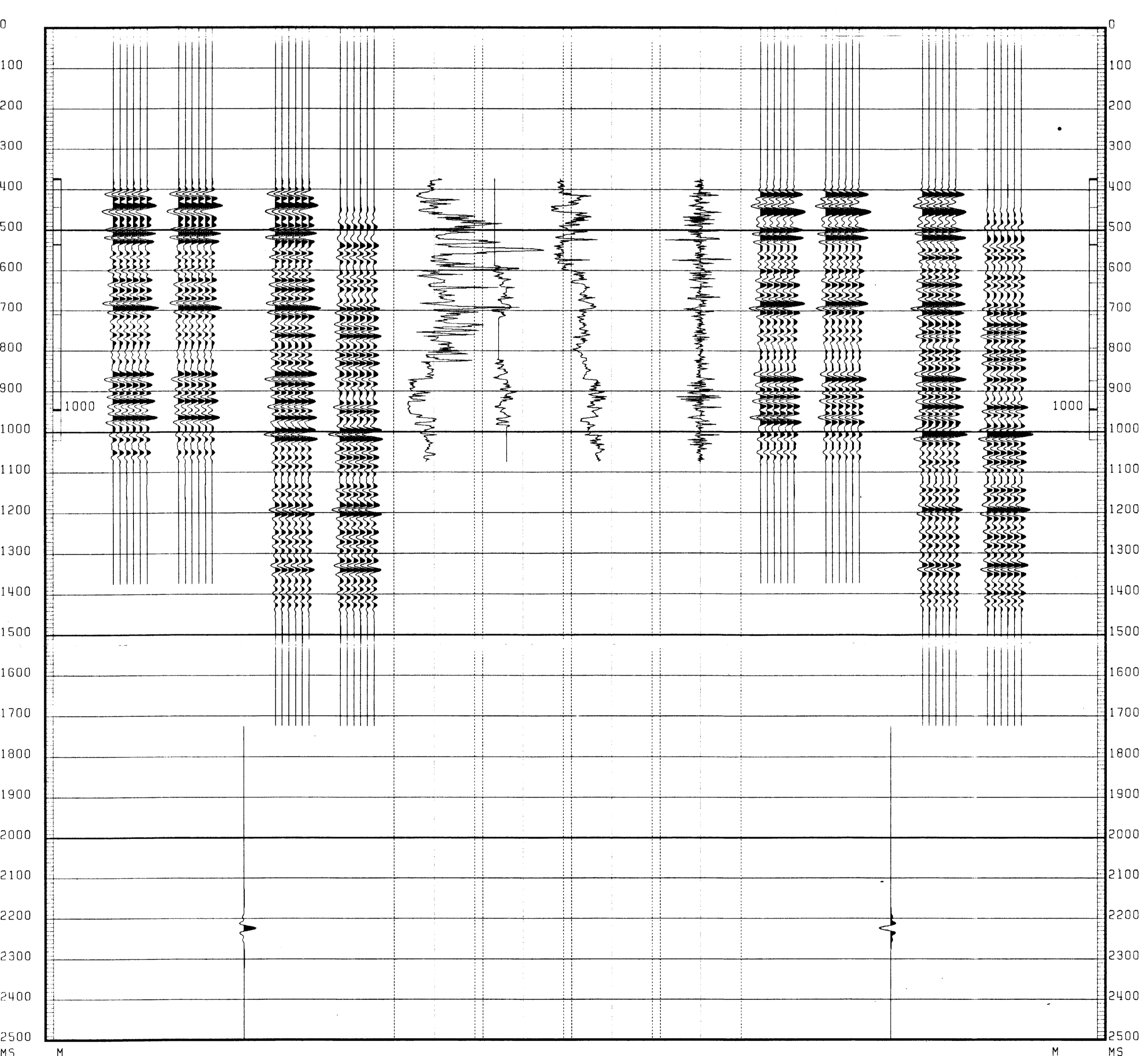


CLIENT : BEACH PETROLEUM N.L.
 FIELD : WILDCAT
 WELL : PRINCES - 1

GEOGRAM FROM WST BUTTERWORTH FILTER WAVELET 10-60 HERTZ (48 DB/OCTAVE) NORMAL & REVERSE POLARITY

PRINCES - 1

MULTIPLES ONLY REVERSE POLARITY
 PRIMARIES AND MULTIPLES REVERSE POLARITY
 STRETCHER CORRECTIONS TO REFLECT COEFF. OF -0.5
 PRIMARIES WITH TRANSMISSION LOSS REVERSE POLARITY
 PRIMARIES REVERSE POLARITY
 REFLECTION
 SONIC
 DENSITY
 GRAM RBT
 MULTIPLES ONLY NORMAL POLARITY
 PRIMARIES AND MULTIPLES NORMAL POLARITY
 STRETCHER CORRECTIONS TO REFLECT COEFF. OF -0.5
 PRIMARIES WITH TRANSMISSION LOSS NORMAL POLARITY
 PRIMARIES NORMAL POLARITY



COMPANY BEACH PETROLEUM N.L.
 FIELD WILDCAT
 WELL PRINCES - 1
 COUNTRY AUSTRALIA

