



COMPANY: BEACH PETROLEUM N.L.

WELL: PRINCES #1 *W.C.R Encl 1-4*
 FIELD: WILDCAT
 PERMIT: PEP 108
 STATE: VICTORIA
 NATION: AUSTRALIA
 LOCATION: OTWAY BASIN
 LINE TM12,S.P. 905

 OTHER SERVICES-
 DLL-MSFL-GR
 LDL-CNL-GR
 SLS-GR
 SHDT-GR
 WSS

 LATITUDE: 038 29'32" S
 LONGITUDE: 142 59'20" E

 PERMANENT DATUM: M.S.L. ELEVATIONS-
 ELEV. OF PERM. DATUM: KB: 115.5 M
 LOG MEASURED FROM: K.B. DF: 115.4 M
 115.5 M ABOVE PERM. DATUM GL: 109.5 M
 DRLG. MEASURED FROM: K.B.

 PROGRAM
 TAPE NO:
 28.4
 SERVICE
 ORDER NO:

 DATE: 4 APR 86
 RUN NO: 1

 DEPTH-DRILLER: 1150.0 M
 DEPTH-LOGGER: 1152.0 M
 BTM. LOG INTERVAL: 1132.0 M
 TOP LOG INTERVAL: 525.0 M

 CASING-DRILLER: 291.0 M
 CASING-LOGGER: 291.0 M
 CASING: 9 5/8
 WEIGHT: 36.0000 LB/F
 BIT SIZE: 12 1/4 8 1/2
 DEPTH: 295.0 M 1150.0 M

 TYPE FLUID IN HOLE: KCL/POLYMER
 DENSITY: 8.90 LB/G
 VISCOSITY: 57.0 S
 PH: 9.5
 FLUID LOSS: 8.0 C3
 SOURCE OF SAMPLE: FLOWLINE
 RM: .216 DHMM AT 65.0 DEGF
 RMF: .205 DHMM AT 68.0 DEGF
 RMC: .250 DHMM AT 65.0 DEGF
 SOURCE RMF/RMC: PRESS /PRESS
 RM AT BHT: .131 DHMM AT 112. DEGF
 RMF AT BHT: .129 DHMM AT 112. DEGF
 RMC AT BHT: .151 DHMM AT 112. DEGF

 TIME CIRC. STOPPED: 16:15 03/04
 TIME LOGGER ON BTM.: 17:15 04/04

MAX. REC. TEMP: 112.0 DEGF

 LOGGING UNIT NO: 2681
 LOGGING UNIT LOC: QEA
 RECORDED BY: OLIVIER BOUBE
 WITNESSED BY: A. BUFFIN/B.RAYNER

REMARKS:

CORRELATION MADE FROM GR RUN#1.

EQUIPMENT NUMBERS-

SHM-AA 1226 GFH-A 49268 CST-2 792

ALL INTERPRETATIONS ARE OPINIONS BASED ON INFERENCE FROM ELECTRICAL OR OTHER MEASUREMENTS AND WE CANNOT, AND DO NOT GUARANTEE THE ACCURACY OR CORRECTNESS OF ANY INTERPRETATIONS, AND WE SHALL NOT, EXCEPT IN THE CASE OF GROSS OR WILLFUL NEGLIGENCE ON OUR PART, BE LIABLE OR RESPONSIBLE FOR ANY LOSS, COSTS, DAMAGES OR EXPENSES INCURRED OR SUSTAINED BY ANYONE RESULTING FROM ANY INTERPRETATION MADE BY ANY OF OUR OFFICERS, AGENTS OR EMPLOYEES. THESE INTERPRETATIONS ARE ALSO SUBJECT TO OUR GENERAL TERMS AND CONDITIONS AS SET OUT IN OUR CURRENT PRICE SCHEDULE.

CP 28.4 FILE 4 04-APR-86 19:00

DATA ACQUIRED NA

CP 28.4 FILE 3 04-APR-86 18:51

SHOT SUMMARY LISTING PERFORMED 04-APR-86 18:51

SHOT	STATUS	DEPTH	TENSION
1	FIRE	1132.00	710.5
2	FIRE	1120.04	482.7
3	FIRE	1092.98	1206.
4	FIRE	1046.00	580.5
5	FIRE	1041.47	597.0
6	FIRE	1023.07	460.2
7	FIRE	1008.02	886.0
8	FIRE	1006.55	524.5
9	FIRE	1001.95	649.5
10	FIRE	995.02	339.5
11	FIRE	926.97	742.5
12	FIRE	890.06	358.0
13	FIRE	861.00	126.8
14	FIRE	857.01	603.5
15	FIRE	810.04	419.2
16	FIRE	803.56	131.3
17	FIRE	772.54	503.2
18	FIRE	685.47	335.0
19	FIRE	664.97	387.7
20	FIRE	657.09	115.6
21	FIRE	650.43	405.0
22	FIRE	646.48	175.3
23	FIRE	643.02	514.5
24	FIRE	634.92	137.5
25	FIRE	628.99	220.6
26	FIRE	602.96	177.3
27	FIRE	579.06	113.6
28	FIRE	559.99	113.4
29	FIRE	541.93	111.1
30	FIRE	525.06	101.0

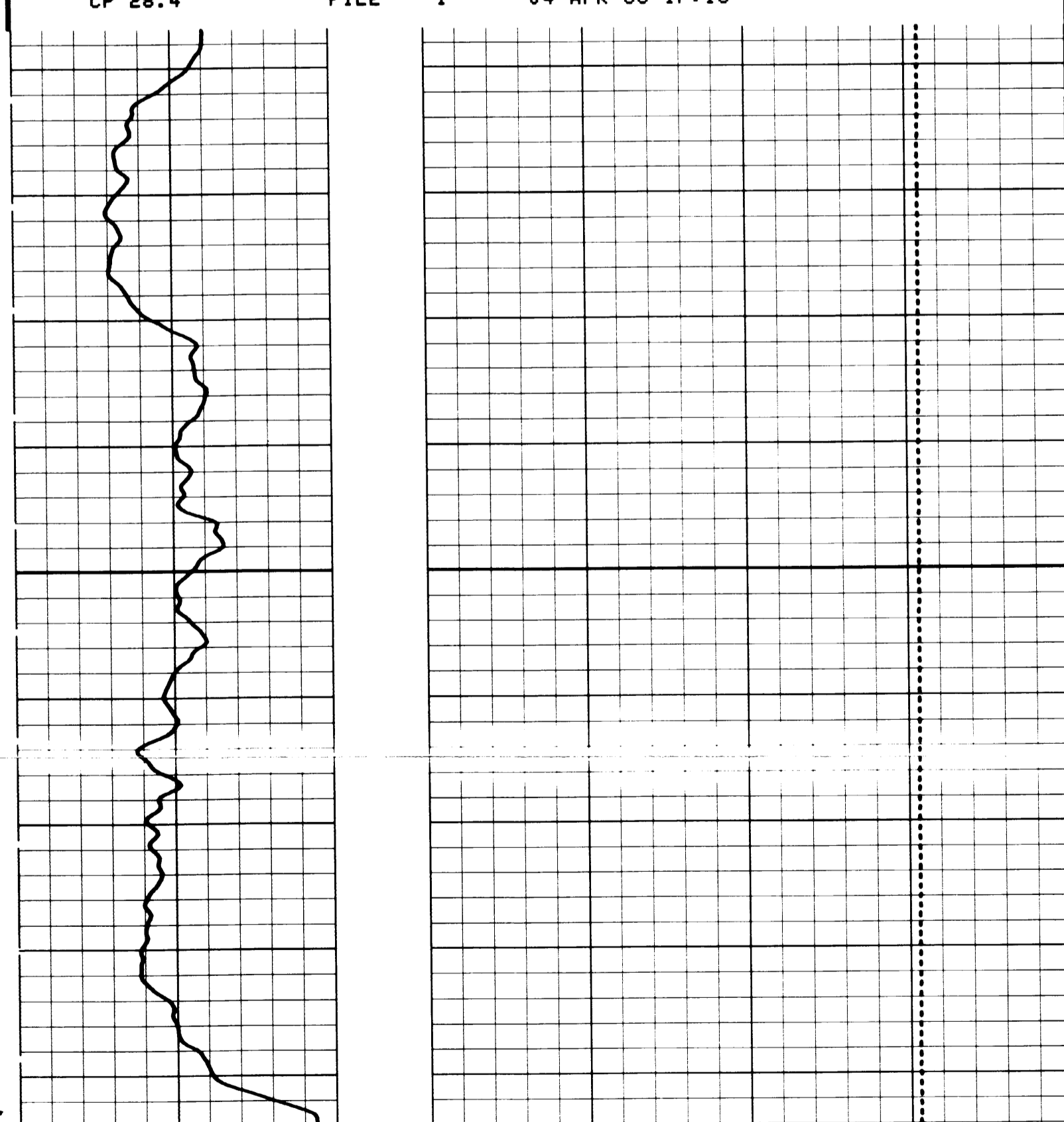
DEPTH UNITS : METE BIT SIZE : 8.500 IN

RING TYPE : LARG BULLET TYPE : COMB

POWDER LOAD : 12.00 G POWDER TYPE : AHT

GR (GAPI)	TENS(LB)
0.0 100.00	3000.0 0.0

CP 28.4 FILE 1 04-APR-86 17:18



CP 28.4 FILE 1 04-APR-86 17:07

GR (GAPI)	TENS(LB)
0.0 100.00	3000.0 0.0

SENSOR MEASURE POINT TO TOOL ZERO

TENS 2.59 METER GR 4.11 METER

PARAMETERS

NAME	VALUE	UNIT	NAME	VALUE	UNIT
BS	8.50000	IN	BHS	OPEN	