

Plate 3: 2121 metres depth.

Reflected Light

This field is similar to that of the previous plates (1 & 2) containing largely inertinite (white) and exinite (brown).

Field Dimensions: 0.26 x 0.18 mm.

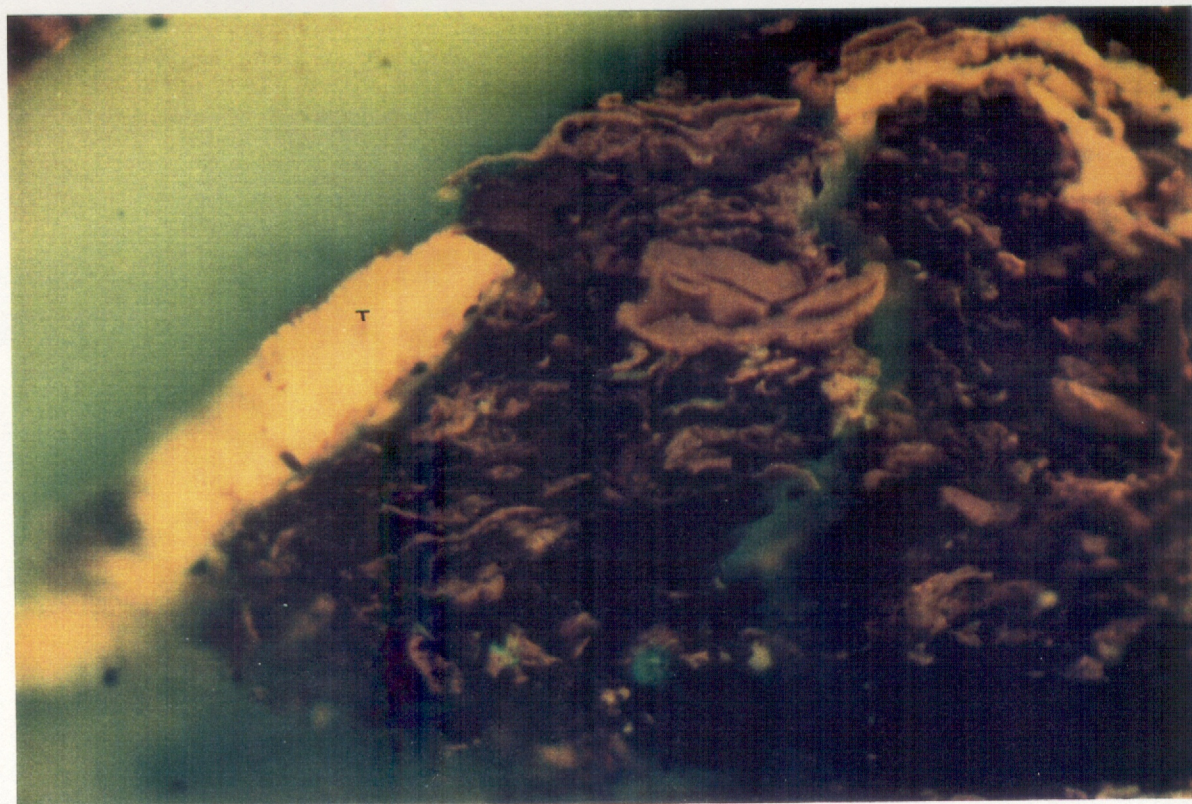


Plate 4: Same Field as above.

Fluorescence Mode

Exinite macerals include telalginite (T), sporinite (centre), lamalginite and liptodetrinite.