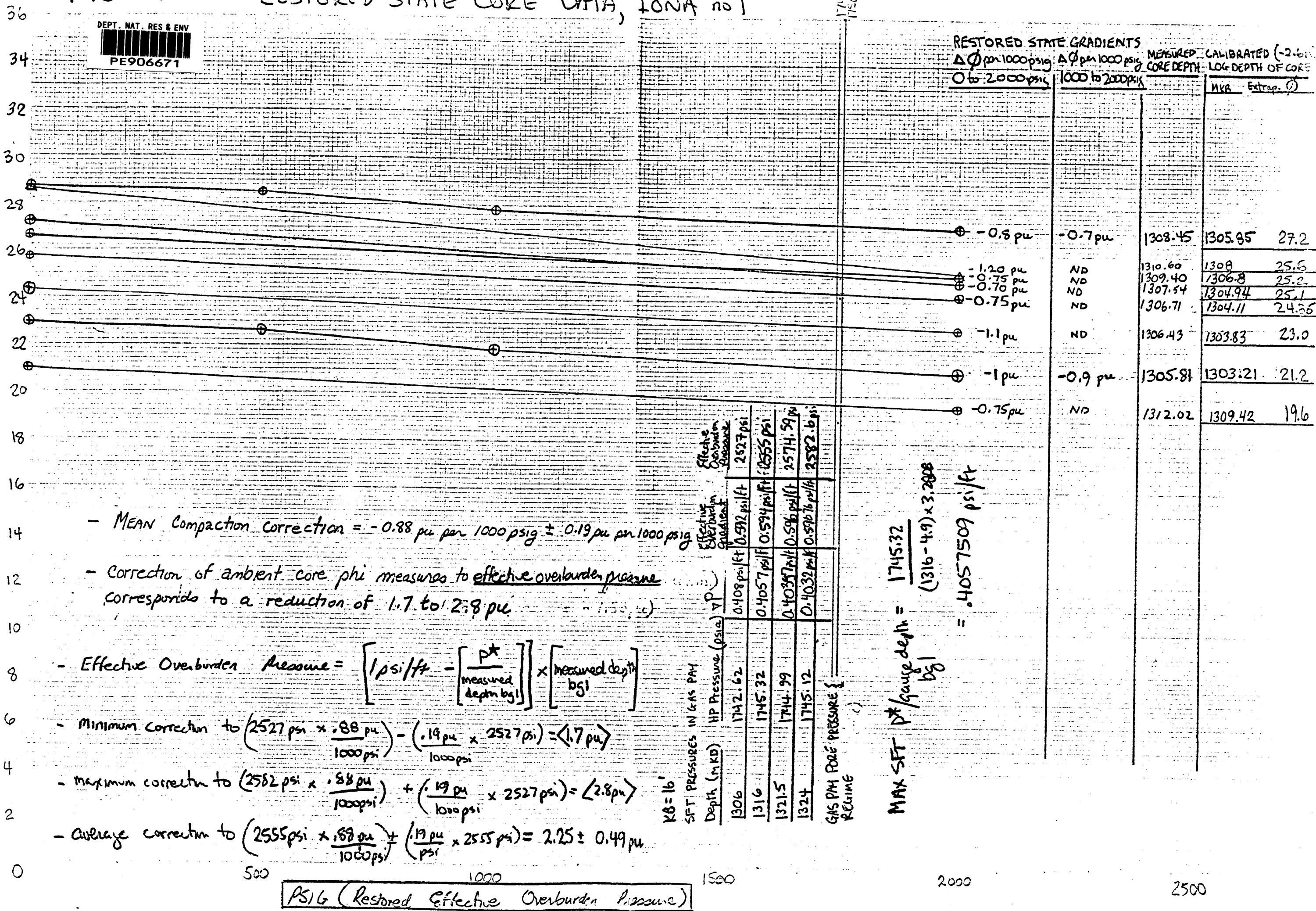


# FIGURE 3. RESTORED STATE CORE DATA, IONA no 1



PHI

- MEAN Compaction Correction = -0.88 pu per 1000 psig ± 0.19 pu per 1000 psig

- Correction of ambient core phi measures to effective overburden pressure corresponds to a reduction of 1.7 to 2.8 pu

- Effective Overburden Pressure =  $\left[ 1 \text{ psi/ft} - \left[ \frac{p^*}{\text{measured depth bgl}} \right] \right] \times \left[ \text{measured depth bgl} \right]$

- Minimum correction to  $\left( 2527 \text{ psi} \times \frac{.88 \text{ pu}}{1000 \text{ psi}} \right) - \left( \frac{.19 \text{ pu}}{1000 \text{ psi}} \times 2527 \text{ psi} \right) = (1.7 \text{ pu})$

- Maximum correction to  $\left( 2582 \text{ psi} \times \frac{.88 \text{ pu}}{1000 \text{ psi}} \right) + \left( \frac{.19 \text{ pu}}{1000 \text{ psi}} \times 2527 \text{ psi} \right) = (2.8 \text{ pu})$

- Average correction to  $\left( 2555 \text{ psi} \times \frac{.88 \text{ pu}}{1000 \text{ psi}} \right) \pm \left( \frac{.19 \text{ pu}}{\text{psi}} \times 2555 \text{ psi} \right) = 2.25 \pm 0.49 \text{ pu}$

Depth (m.k.d)	HP Pressure (psia)	Effective Overburden Pressure
1306	1742.62	0.408 psi/ft
1316	1745.32	0.592 psi/ft
1321.5	1744.99	0.594 psi/ft
1324	1745.12	0.596 psi/ft
		2527 psi
		2555 psi
		2574.59 psi
		2582.6 psi

MAX SFT  $\frac{p^*}{\text{gauge depth}} = \frac{1745.32}{(1316 - 4.9) \times 3.2808} = .4057509 \text{ psi/ft}$

PSIG (Restored Effective Overburden Pressure)

Iona no 1. Restored state core data. Data and corrections are at estimated effective overburden conditions.