

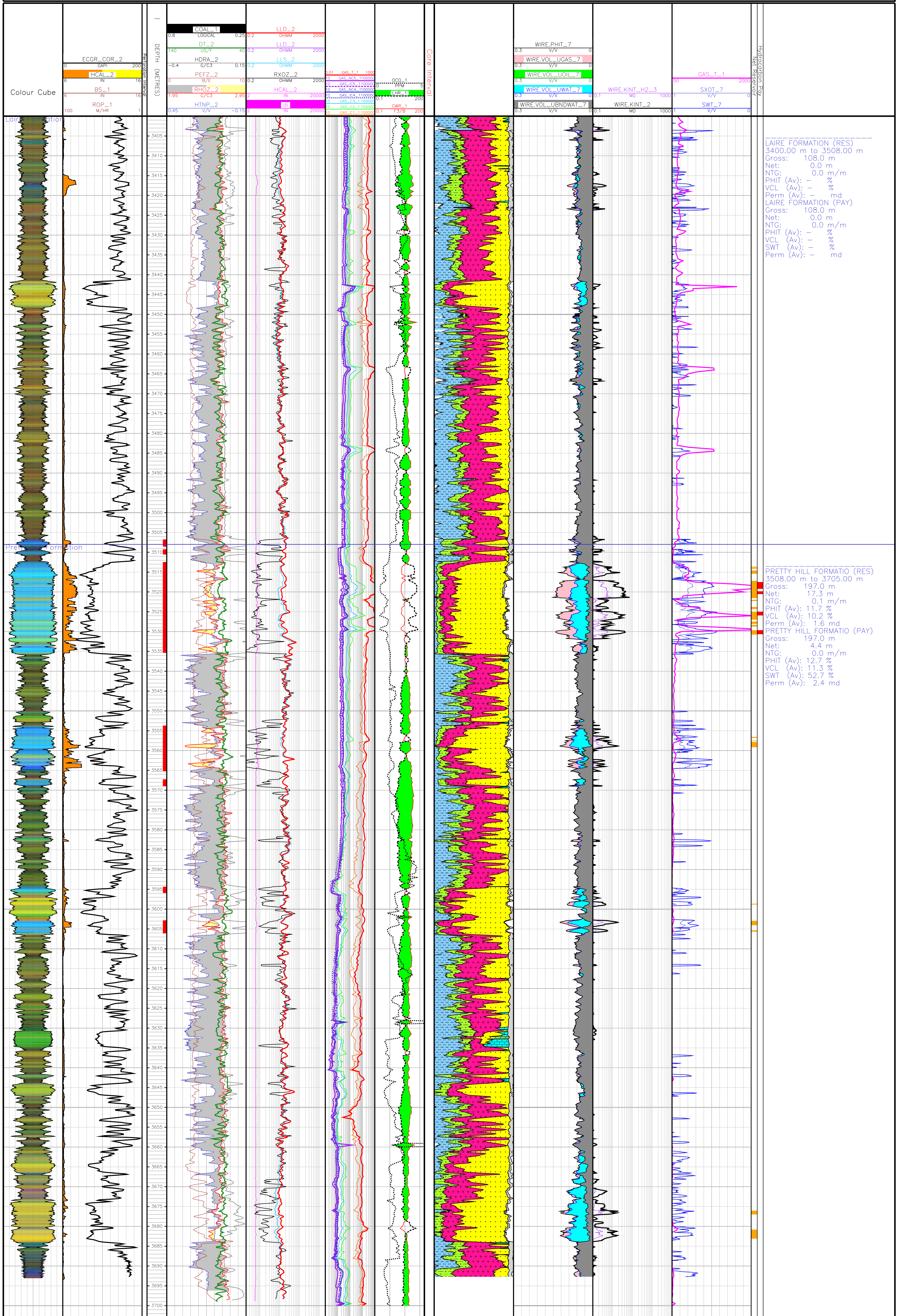
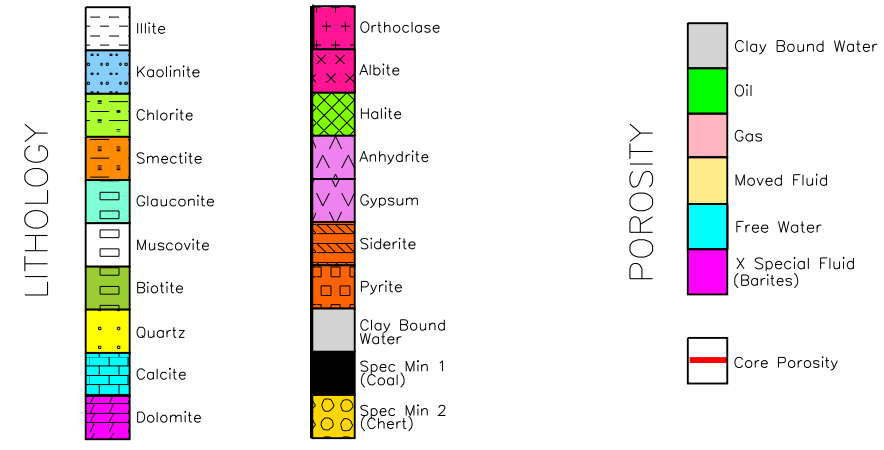


Petrophysical Analysis of: GLENAIRE-1ST1

COMPANY: Beach Petroleum Ltd, Santos Ltd
 LOCATION: PEP 160
 LATITUDE: 37 34' 47.03 S
 LONGITUDE: 140 59' 52.25 E
 X COORDINATE: -
 Y COORDINATE: -
 HORIZONTAL UNITS: METRES
 DATE PLOTTED: 23-Feb-2007

DATUM FOR ELEVATION: AHD
 WATER DEPTH: -
 MEASUREMENT REF.: Rotary Table
 ELEVATION MEAS. REF.: 76.10
 DRILLED DEPTH: 3700.00
 VERTICAL UNITS: METRES
 DATE LOGGED: 26-Oct-2006
 VERTICAL SCALE: 1:500

Bit Size: 6 in
 Mud Type: KCl-HPHA
 DFD: 11.0243
 BHT: 133 C
 Rm: 0.054 @ 14,800
 Rrf: 0.047 @ 14,800
 Rrc: 0.068 @ 14,800
 KCl: 8%



LAIRE FORMATION (RES)
 3400.00 m to 3508.00 m
 Gross: 108.0 m
 Net: 0.0 m
 NTG: 0.0 m/m
 PHIT (Av): -
 VCL (Av): -
 Perm (Av): - md
 LAIRE FORMATION (PAY)
 Gross: 108.0 m
 Net: 0.0 m
 NTG: 0.0 m/m
 PHIT (Av): -
 VCL (Av): -
 SWT (Av): -
 Perm (Av): - md

PRETTY HILL FORMATIO (RES)
 3508.00 m to 3705.00 m
 Gross: 197.0 m
 Net: 17.3 m
 NTG: 0.1 m/m
 PHIT (Av): 11.7 %
 VCL (Av): 10.2 %
 Perm (Av): 1.6 md
 PRETTY HILL FORMATIO (PAY)
 Gross: 197.0 m
 Net: 4.4 m
 NTG: 0.0 m/m
 PHIT (Av): 12.7 %
 VCL (Av): 11.3 %
 SWT (Av): 52.7 %
 Perm (Av): 2.4 md