

Digby #1

Spore/Pollen Distribution Chart
(Diversity)

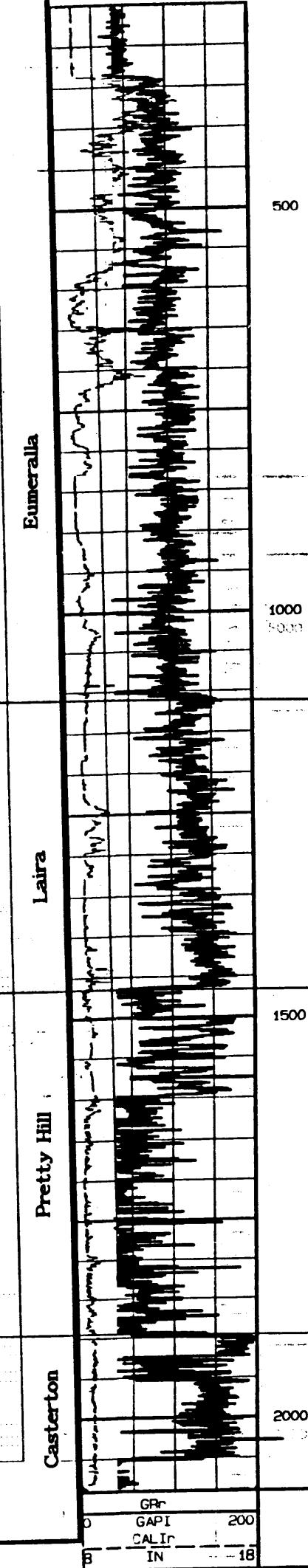
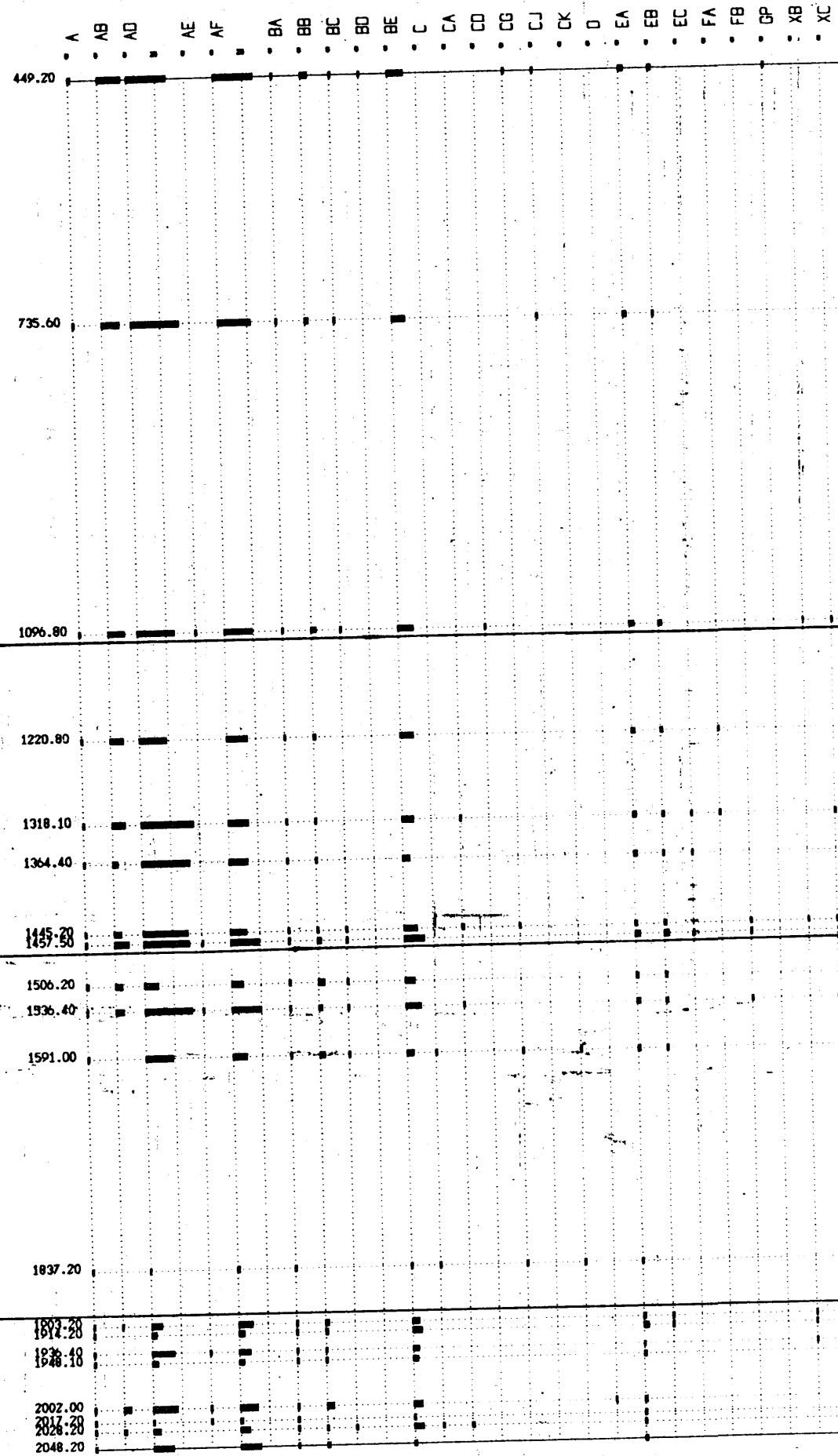
Total Flora

Plant "Division" Group
Diversity



- Land Plant Spores
- BRYOPHYTA
- LYCOPHYTA
- ARTHROPHYTA
- PTEROPHYTA
- Gymnosperms - unclassified
- PTERIDOPHYTES
- CYCADOPHYTA
- GNETOPHYTA
- CONIFEROPHYTA
- Angiospermous Pollen
- UNCLASSIFIED
- HAMMELIADAE
- ROSIDAE
- LILLIDAE
- COMMELINIDAE
- Fungal Spores
- PRASINOPHYTA
- CHLOROPHYTA
- AFFINITY UNKNOWN
- VERYHACHUM GROUP
- MICRHYSTRIDIUM GROUP
- PERIDINIALES
- REWORKED FORMS
- CONTAMINATES

Depth (Metres)



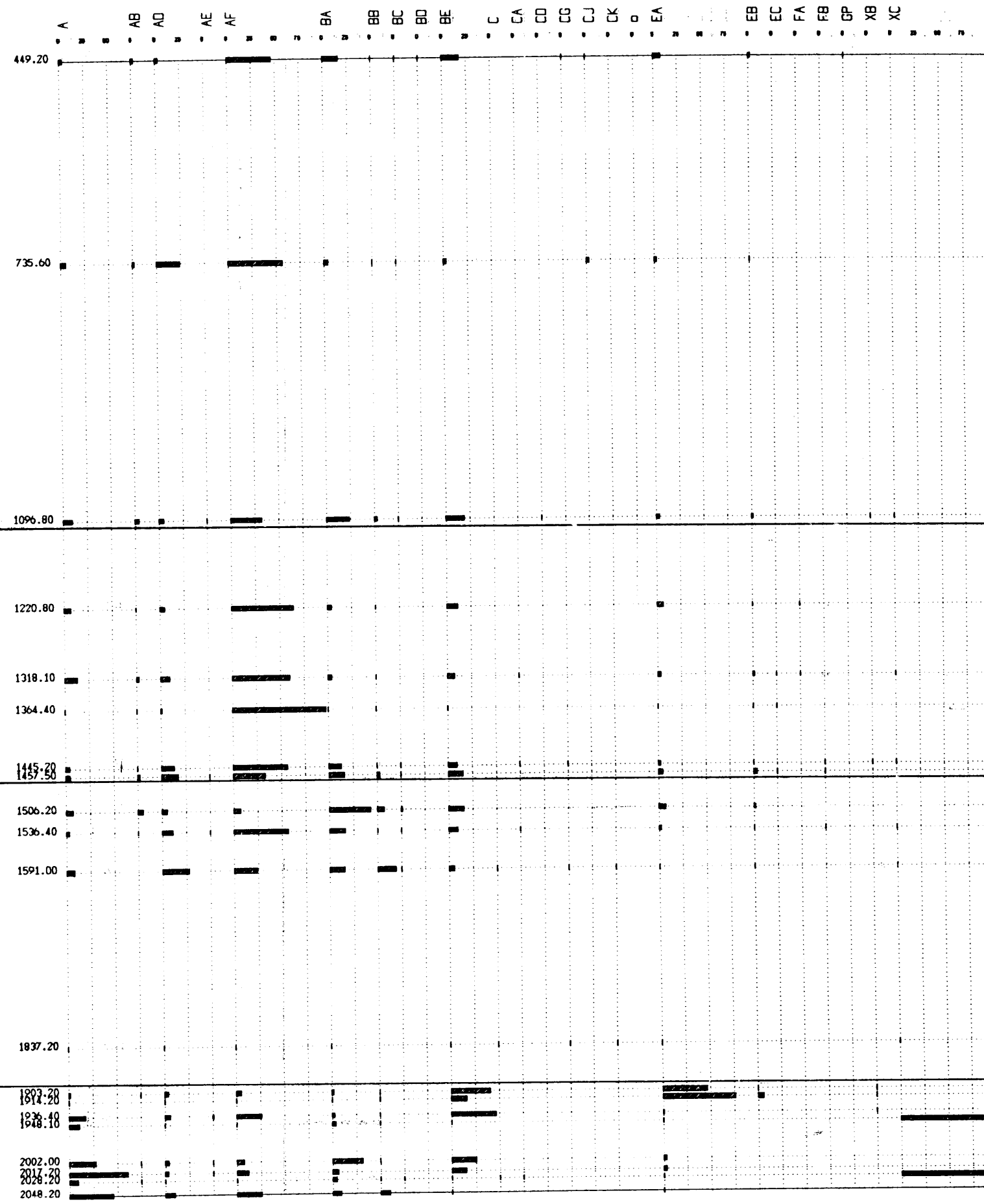
Spore/Pollen Distribution Chart
(Counts)

Total Flora

Plant "Division" Group
Abundance

- Land Plant Spores
- BRYOPHYTA
- LYCOPHYTA
- ARTHROPHYTA
- PTEROPHYTA
- Gymnosperms - unclassified
- PTERIDOPHYTES
- CYCADOPHYTA
- GNETOPHYTA
- CONIFEROPHYTA
- Angiospermous Pollen
- UNCLASSIFIED
- HAMMELIADAE
- ROSIDAE
- LILLIDAE
- COMMELINIDAE
- Fungal Spores
- PRASINOPHYTA
- CHLOROPHYTA
- AFFINITY UNKNOWN
- VERYHACHUM GROUP
- MICRHYSTRIDIUM GROUP
- PERIDINIALES
- REWORKED FORMS
- CONTAMINATES

Depth (Metres)



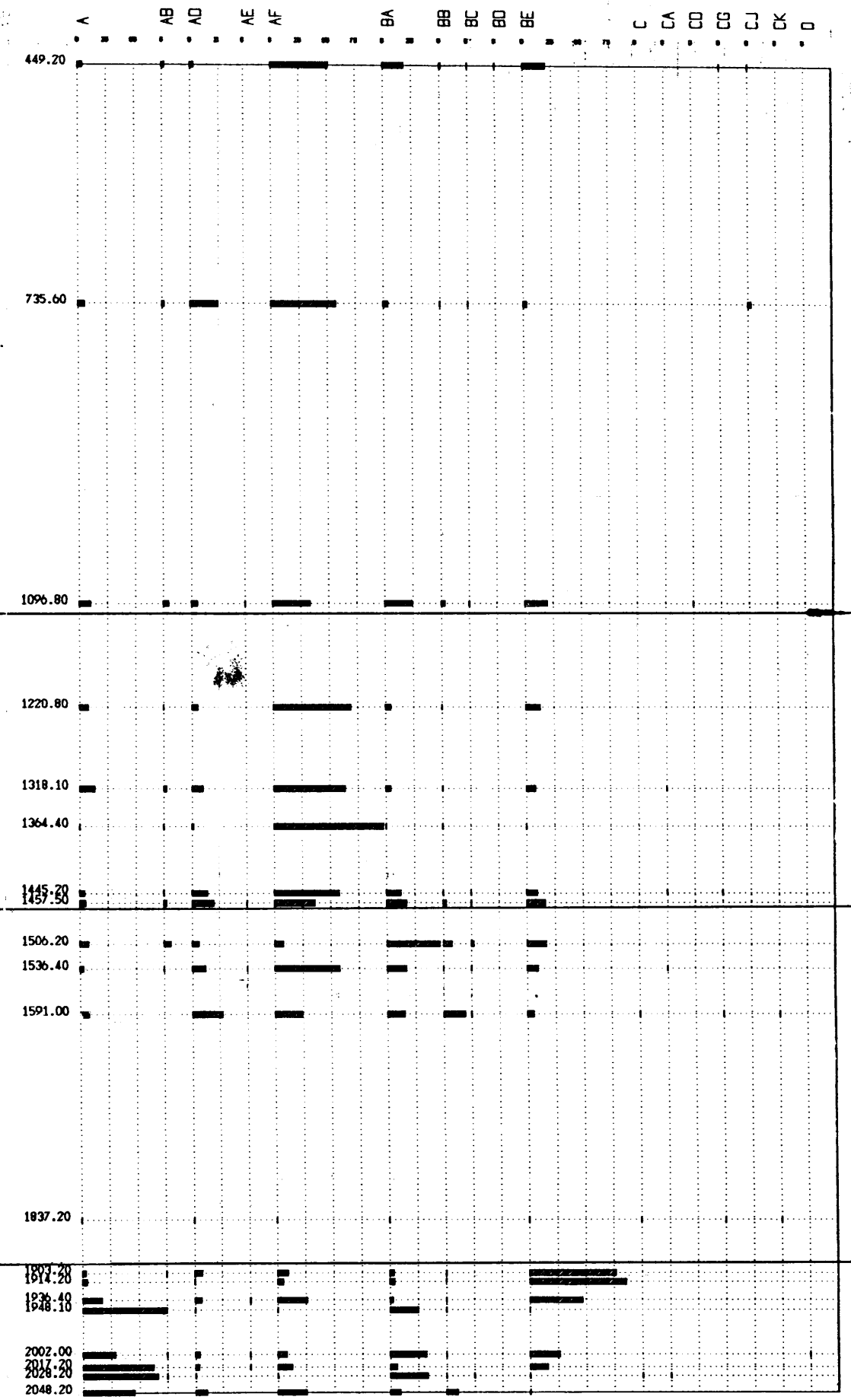
Spore/Pollen Distribution Chart
(Counts)

Land Plant Flora

Land Plant "Division" Group
Abundance

- Land Plant Spores
- BRYOPHYTA
- LYCOPHYTA
- ARTHROPHYTA
- PTEROPHYTA
- Gymnosperms - unclassified
- PTERIDOPHYTES
- CYCADOPHYTA
- GNETOPHYTA
- CONIFEROPHYTA
- Angiospermous Pollen
- UNCLASSIFIED
- HAMMELIADAE
- ROSIDAE
- LILLIDAE
- COMMELINIDAE
- Fungal Spores

Depth (Metres)



APG Consultants
Brisbane

Palynology Facility

0
GPI
CALIP
IN 200
18