



COMPANY: BEACH PETROLEUM N.L.
 WELL: BARTON CORNER NO. 1
 FIELD: WILDCAT
 STATE: VICTORIA
 NATION: AUSTRALIA
 LOCATION:

OTHER SERVICES-
 BHC-NGS
 LDL-CNL-GR
 DLL-MSFL-GR
 WST

SEC: TWP: RGE:
 LATITUDE: 38 25 52.357S
 LONGITUDE: 142 45 18.351E

PERMANENT DATUM: MSL ELEVATIONS-
 ELEV. OF PERM. DATUM: KB: 63.0 M
 LOG MEASURED FROM: KB DF: 62.6 M
 63.0 M ABOVE PERM. DATUM GL: 57.6 M
 DRLG. MEASURED FROM: KB

PROGRAM
 TAPE NO:
 26.4
 SERVICE
 ORDER NO:
 BEA 850401

DATE: 19 APR 85
 RUN NO: 1

DEPTH-DRILLER: 2100.0 M
 DEPTH-LOGGER:
 BTM. LOG INTERVAL: 2050.0 M
 TOP LOG INTERVAL: 988.0 M

CASING-DRILLER: 302 M
 CASING-LOGGER: 302 M
 CASING: 9 5/8"
 WEIGHT: 36.00 LB/F
 BIT SIZE: 12 1/4" 8 1/2"
 DEPTH: 302 M 2100 M

TYPE FLUID IN HOLE: KCL/POLYMER
 DENSITY: 9.6 LB/G
 VISCOSITY: 38.0 S
 PH: 9.0
 FLUID LOSS: 7.8 C3
 SOURCE OF SAMPLE: FLOWLINE
 RM: .115 OHMM AT 24.0 DEGC
 RMF: .098 OHMM AT 24.0 DEGC
 RMC: .130 OHMM AT 24.0 DEGC
 SOURCE RMF/RMC: FLOWLINE/FLOWLINE
 RM AT BHT: .053 OHMM AT 77.0 DEGC
 RMF AT BHT: .045 OHMM AT 77.0 DEGC
 RMC AT BHT: .060 OHMM AT 77.0 DEGC

TIME CIRC. STOPPED: 18:15/17
 TIME LOGGER ON BTM.: 08:00/19

MAX. REC. TEMP: 77.0 DEGC

LOGGING UNIT NO: 455
 LOGGING UNIT LOC: SEA
 RECORDED BY: C.KALNINS
 WITNESSED BY: B.RAYNER/A.TABASSI

REMARKS:

MAX. DEVIATION OF 2 DEG @ 671 M.
 A TOTAL OF 25 SIDEWALL CORES WERE ATTEMPTED.

EQUIPMENT NUMBERS-

SHM-AA 889 GFH-A 550 GFC-A 543

ALL INTERPRETATIONS ARE OPINIONS BASED ON INFERENCES FROM ELECTRICAL OR
 OTHER MEASUREMENTS AND WE CANNOT, AND DO NOT GUARANTEE THE ACCURACY OR
 CORRECTNESS OF ANY INTERPRETATIONS, AND WE SHALL NOT, EXCEPT IN THE CASE
 OF GROSS OR WILLFUL NEGLIGENCE ON OUR PART, BE LIABLE OR RESPONSIBLE FOR
 ANY LOSS, COSTS, DAMAGES OR EXPENSES INCURRED OR SUSTAINED BY ANYONE
 RESULTING FROM ANY INTERPRETATION MADE BY ANY OF OUR OFFICERS, AGENTS OR
 EMPLOYEES. THESE INTERPRETATIONS ARE ALSO SUBJECT TO OUR GENERAL TERMS
 AND CONDITIONS AS SET OUT IN OUR CURRENT PRICE SCHEDULE.

SHOT SUMMARY LISTING PERFORMED 19-APR-85 08:02

SHOT	STATUS	DEPTH	TENSION
1	FIRE	2049.8	119.6
2	FIRE	1990.0	1860.
3	FIRE	1924.5	584.5
4	FIRE	1893.0	98.37
5	FIRE	1890.0	171.3
6	FIRE	1880.0	82.93
7	FIRE	1835.0	217.7
8	FIRE	1780.5	160.5
9	FIRE	1724.9	1053.
10	FIRE	1700.0	39.28
11	FIRE	1683.0	117.5
12	FIRE	1674.0	555.5
13	FIRE	1633.5	1205.
14	FIRE	1585.0	635.0
15	FIRE	1562.5	441.0
16	FIRE	1478.1	25.46
17	FIRE	1426.6	142.8
18	FIRE	1392.2	130.5
19	FIRE	1388.9	601.0
20	FIRE	1386.3	983.5
21	FIRE	1173.1	65.18
22	FIRE	1170.0	35.18
23	FIRE	1006.1	689.0
24	FIRE	1003.9	211.8
25	FIRE	987.9	740.5

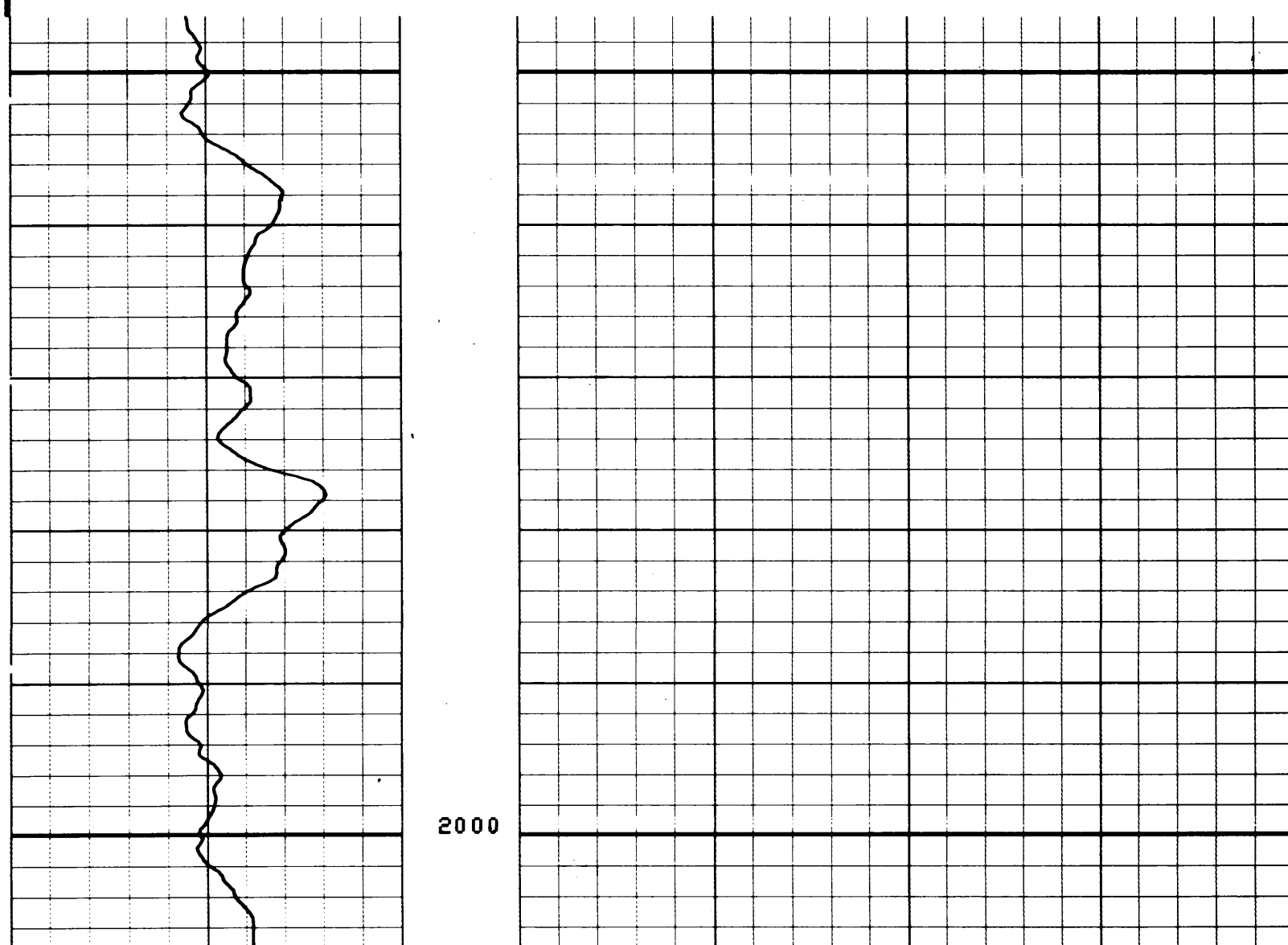
DEPTH UNITS : METE BIT SIZE : 8.500 IN

RING TYPE : LARG BULLET TYPE : COMB

POWDER LOAD : 12.00 G POWDER TYPE : AHT

GR (GAPI) 0.0 150.00

CP 26.4 FILE 1



CP 26.4 FILE 1

GR (GAPI) 0.0 150.00

SENSOR MEASURE POINT TO TOOL ZERO

TENS 1.4 METER GR 3.0 METER

PARAMETERS

NAME	VALUE	UNIT	NAME	VALUE	UNIT
BS	8.50000	IN	BHS	OPEN	