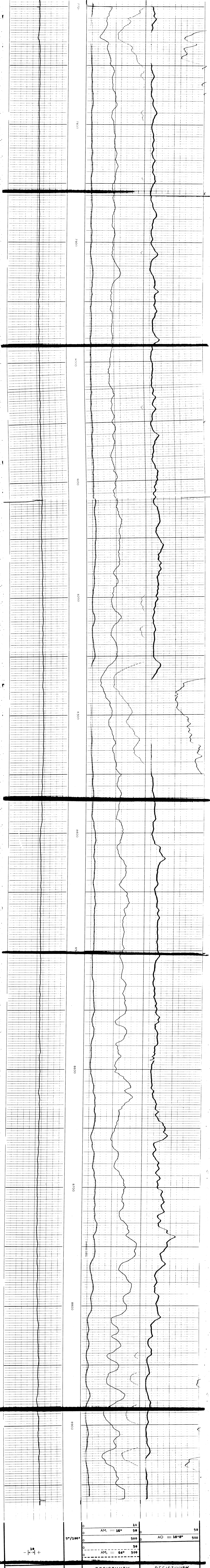


Log header information including COMPANY (OIL DEVELOPMENT N.L.), FIELD (Anglona no. 1), WELL (P.1. 256 Vic.), COUNTRY (AUSTRALIA), STATE (Victoria), and various well parameters like Permeability, Log Measured From, and Drilling Measured From.

REMARKS:

Table with 2 columns: RUN No. and EQUIPMENT Type and No. Values include Spacing AM1 (16"), Spacing AM2 (64"), Spacing AO (18\*8"), Weight used (None), and equipment types like S-57, SPP-D, ESP-E.



Summary table at the bottom of the log plot with columns for SPONTANEOUS POTENTIAL, RESISTIVITY, and DEPTH. It includes values for AM1, AO, and AM2 resistivities and a potential scale.

Log footer information including COMPANY (OIL DEVELOPMENT N.L.), FIELD (P.1. 256 Vic.), COUNTRY (AUSTRALIA), STATE (Victoria), and well parameters like Rm (1.00), Rmf (1.10), Rmc (2.30), BHT (106), and SCHL. F.R. (8,956').