

COMPOSITE WELL LOG

WELL NAME & NUMBER: **WRIXONDALE No.1**

PETROLEUM TENEMENT: **PEP 107** STATE: **VICTORIA** BASIN: **GIPPSLAND** WELL STATUS: **Plugged and Abandoned**



LOCATION: N 37°59'42.8" S, E 147°29'48.1" E
 ELEVATION: REFERENCE PT. (K.B.) 26.2m A.S.L.
 GROUND 22.2m A.S.L.

DATE SPUNDED: 12/10/1985
 DATE DRILLING STOPPED: 18/10/1985
 DATE RIG OFF: 19/10/1985
 TOTAL DEPTH DRILLER: 987.3m
 TOTAL DEPTH WIRELINE LOG: 987.5m

HOLE SIZE: IN FROM TO SURFACE
 20" 3.0m 3.0m
 12 1/4" 3.0m 302.0m
 8 1/2" 302.0m 987.3m

CASING: IN WT GR DEPTH CMT TO SURFACE
 16" 36 lb/ft J-55 299.0m
 9 1/2" 302.0m 987.3m

CEMENT PLUGS: FROM TO SACKS SURFACE
 810-0 750-0 66
 306-0 246-0 25

WIRELINE LOG DATA	
Date	18-10-85
Run No	1
Rm of Measured Temp	2:55 at 22°C
Rmf of Measured Temp	2:70 at 19.5°C
Rmc of Measured Temp	2:18 at 20°C
Source: Rmf Rmc	Press Press
Rm of BHT	1:578 at 48.9°C
Time Since Circ	3:21 hrs
Max. Recorded Temp	48.9°C
LOG	INTERVAL
LOGGING SUITE	DL-MSFL-GR-SP 298.5 - 983.0m LDC-CHL-GR 298.5 - 986.8m BHC-GR 298.5 - 985.8m WST & CST
Formation Test Results	DST-1 Over the Interval 777-0 - 795-0m recovered drilling fluid only. DST-2 Over the Interval 799-0 - 807-0m recovered 19BBLs (approx) of gas-cut formation water

LITHOLOGIC	REFERENCE
Sandstone	Carbonaceous
Siltstone	Igneous
Claystone	Basement
Marl	Not seen, No recovery
Calcareous	Micro fossil Macro fossil
Limestone	Pyrite Glauconite
Dolomite	Iron oxide, hyd, etc Siliceous cement
Coal	Oolite, Pisolite, etc Lithic fragment

Consortium: Beach Petroleum (Operator), Gas & Fuel Exp. N.L., Aust. Oil & Gas Corp. Ltd., TCFPL Res. Ltd., Pan-Pacific Petroleum N.L., Lomo Energy Australia Ltd.

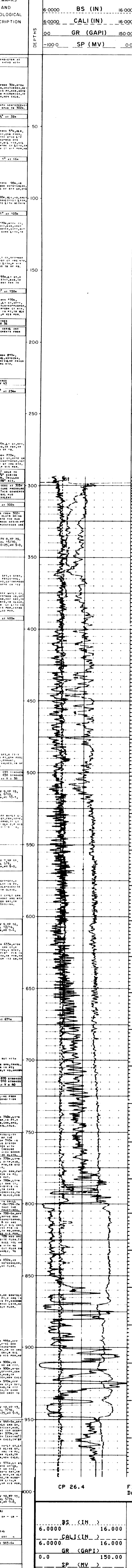
Location Map: 5th West Barmuda 1

WELL SITE GEOL.: A. TABASSI
 WELL SITE ENG.: V. SANTOSTEFANO
 AUTHOR: A. TABASSI
 DRAFTSMAN: N.R. / S.C.

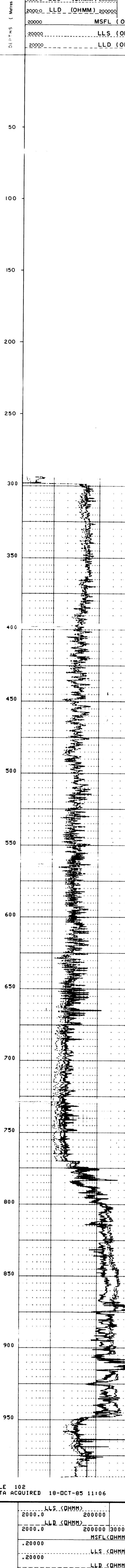
FORMATION EVALUATION LOG

DEPTH (m)	REMARKS AND LITHOLOGICAL DESCRIPTION
0 - 3.0	Surface to 3.0m depth
3.0 - 302.0	20" casing interval
302.0 - 987.3	12 1/4" casing interval
987.3 - 987.5	8 1/2" casing interval
987.5 - 987.5	Well bottom

RESISTIVITY



SONIC



DEPTH (m)	FORMATION NAME	GROUP	AGE
0 - 302.0	WRIXONDALE 1	SEASPRAY GROUP	EARLY MIOCENE
302.0 - 320.0	WRIXONDALE 1	SEASPRAY GROUP	EARLY MIOCENE
320.0 - 330.0	WRIXONDALE 1	SEASPRAY GROUP	EARLY MIOCENE
330.0 - 340.0	WRIXONDALE 1	SEASPRAY GROUP	EARLY MIOCENE
340.0 - 350.0	WRIXONDALE 1	SEASPRAY GROUP	EARLY MIOCENE
350.0 - 360.0	WRIXONDALE 1	SEASPRAY GROUP	EARLY MIOCENE
360.0 - 370.0	WRIXONDALE 1	SEASPRAY GROUP	EARLY MIOCENE
370.0 - 380.0	WRIXONDALE 1	SEASPRAY GROUP	EARLY MIOCENE
380.0 - 390.0	WRIXONDALE 1	SEASPRAY GROUP	EARLY MIOCENE
390.0 - 400.0	WRIXONDALE 1	SEASPRAY GROUP	EARLY MIOCENE
400.0 - 410.0	WRIXONDALE 1	SEASPRAY GROUP	EARLY MIOCENE
410.0 - 420.0	WRIXONDALE 1	SEASPRAY GROUP	EARLY MIOCENE
420.0 - 430.0	WRIXONDALE 1	SEASPRAY GROUP	EARLY MIOCENE
430.0 - 440.0	WRIXONDALE 1	SEASPRAY GROUP	EARLY MIOCENE
440.0 - 450.0	WRIXONDALE 1	SEASPRAY GROUP	EARLY MIOCENE
450.0 - 460.0	WRIXONDALE 1	SEASPRAY GROUP	EARLY MIOCENE
460.0 - 470.0	WRIXONDALE 1	SEASPRAY GROUP	EARLY MIOCENE
470.0 - 480.0	WRIXONDALE 1	SEASPRAY GROUP	EARLY MIOCENE
480.0 - 490.0	WRIXONDALE 1	SEASPRAY GROUP	EARLY MIOCENE
490.0 - 500.0	WRIXONDALE 1	SEASPRAY GROUP	EARLY MIOCENE
500.0 - 510.0	WRIXONDALE 1	SEASPRAY GROUP	EARLY MIOCENE
510.0 - 520.0	WRIXONDALE 1	SEASPRAY GROUP	EARLY MIOCENE
520.0 - 530.0	WRIXONDALE 1	SEASPRAY GROUP	EARLY MIOCENE
530.0 - 540.0	WRIXONDALE 1	SEASPRAY GROUP	EARLY MIOCENE
540.0 - 550.0	WRIXONDALE 1	SEASPRAY GROUP	EARLY MIOCENE
550.0 - 560.0	WRIXONDALE 1	SEASPRAY GROUP	EARLY MIOCENE
560.0 - 570.0	WRIXONDALE 1	SEASPRAY GROUP	EARLY MIOCENE
570.0 - 580.0	WRIXONDALE 1	SEASPRAY GROUP	EARLY MIOCENE
580.0 - 590.0	WRIXONDALE 1	SEASPRAY GROUP	EARLY MIOCENE
590.0 - 600.0	WRIXONDALE 1	SEASPRAY GROUP	EARLY MIOCENE
600.0 - 610.0	WRIXONDALE 1	SEASPRAY GROUP	EARLY MIOCENE
610.0 - 620.0	WRIXONDALE 1	SEASPRAY GROUP	EARLY MIOCENE
620.0 - 630.0	WRIXONDALE 1	SEASPRAY GROUP	EARLY MIOCENE
630.0 - 640.0	WRIXONDALE 1	SEASPRAY GROUP	EARLY MIOCENE
640.0 - 650.0	WRIXONDALE 1	SEASPRAY GROUP	EARLY MIOCENE
650.0 - 660.0	WRIXONDALE 1	SEASPRAY GROUP	EARLY MIOCENE
660.0 - 670.0	WRIXONDALE 1	SEASPRAY GROUP	EARLY MIOCENE
670.0 - 680.0	WRIXONDALE 1	SEASPRAY GROUP	EARLY MIOCENE
680.0 - 690.0	WRIXONDALE 1	SEASPRAY GROUP	EARLY MIOCENE
690.0 - 700.0	WRIXONDALE 1	SEASPRAY GROUP	EARLY MIOCENE
700.0 - 710.0	WRIXONDALE 1	SEASPRAY GROUP	EARLY MIOCENE
710.0 - 720.0	WRIXONDALE 1	SEASPRAY GROUP	EARLY MIOCENE
720.0 - 730.0	WRIXONDALE 1	SEASPRAY GROUP	EARLY MIOCENE
730.0 - 740.0	WRIXONDALE 1	SEASPRAY GROUP	EARLY MIOCENE
740.0 - 750.0	WRIXONDALE 1	SEASPRAY GROUP	EARLY MIOCENE
750.0 - 760.0	WRIXONDALE 1	SEASPRAY GROUP	EARLY MIOCENE
760.0 - 770.0	WRIXONDALE 1	SEASPRAY GROUP	EARLY MIOCENE
770.0 - 780.0	WRIXONDALE 1	SEASPRAY GROUP	EARLY MIOCENE
780.0 - 790.0	WRIXONDALE 1	SEASPRAY GROUP	EARLY MIOCENE
790.0 - 800.0	WRIXONDALE 1	SEASPRAY GROUP	EARLY MIOCENE
800.0 - 810.0	WRIXONDALE 1	SEASPRAY GROUP	EARLY MIOCENE
810.0 - 820.0	WRIXONDALE 1	SEASPRAY GROUP	EARLY MIOCENE
820.0 - 830.0	WRIXONDALE 1	SEASPRAY GROUP	EARLY MIOCENE
830.0 - 840.0	WRIXONDALE 1	SEASPRAY GROUP	EARLY MIOCENE
840.0 - 850.0	WRIXONDALE 1	SEASPRAY GROUP	EARLY MIOCENE
850.0 - 860.0	WRIXONDALE 1	SEASPRAY GROUP	EARLY MIOCENE
860.0 - 870.0	WRIXONDALE 1	SEASPRAY GROUP	EARLY MIOCENE
870.0 - 880.0	WRIXONDALE 1	SEASPRAY GROUP	EARLY MIOCENE
880.0 - 890.0	WRIXONDALE 1	SEASPRAY GROUP	EARLY MIOCENE
890.0 - 900.0	WRIXONDALE 1	SEASPRAY GROUP	EARLY MIOCENE
900.0 - 910.0	WRIXONDALE 1	SEASPRAY GROUP	EARLY MIOCENE
910.0 - 920.0	WRIXONDALE 1	SEASPRAY GROUP	EARLY MIOCENE
920.0 - 930.0	WRIXONDALE 1	SEASPRAY GROUP	EARLY MIOCENE
930.0 - 940.0	WRIXONDALE 1	SEASPRAY GROUP	EARLY MIOCENE
940.0 - 950.0	WRIXONDALE 1	SEASPRAY GROUP	EARLY MIOCENE
950.0 - 960.0	WRIXONDALE 1	SEASPRAY GROUP	EARLY MIOCENE
960.0 - 970.0	WRIXONDALE 1	SEASPRAY GROUP	EARLY MIOCENE
970.0 - 980.0	WRIXONDALE 1	SEASPRAY GROUP	EARLY MIOCENE
980.0 - 987.3	WRIXONDALE 1	SEASPRAY GROUP	EARLY MIOCENE

CP 26.4 FILE 102 DATA ACQUIRED 18-OCT-85 11:06

BS (IN)	6.0000	16.0000	2000.0	LLS (OHMM)	20000	TENS (LB)	0.0
CALI (IN)	6.0000	16.0000	20000	LLD (OHMM)	20000	MSFL (OHMM)	2000.0
GR (GAPI)	0.0	150.00	20000	LLS (OHMM)	2000.0	LLD (OHMM)	2000.0
SP (MV)	-100.0	0.0	20000	LLD (OHMM)	2000.0		

DRG. No. G.379