

COMPANY: AMPOL EXPLORATION LIMITED
 WELL: PAYNESVILLE #1
 FIELD: WILDCAT
 PERMIT: PEP-98
 STATE: VICTORIA
 NATION: AUSTRALIA
 LOCATION: S.P. 293
 LINE G.M. 83A-20
 SEC: TWP: RGE:
 LATITUDE: 037 54 53"
 LONGITUDE: 147 40 21.2"
 PERMANENT DATUM: MSL
 ELEVATIONS-
 ELEV. OF PERM. DATUM: KB: 29.9 M
 LOG MEASURED FROM: K.B. DF: 29.3 M
 29.9 M ABOVE PERM. DATUM GL: 29.0 M
 DRLG. MEASURED FROM: K.B.

OTHER SERVICES-
 DLT-MSFL-GR
 LDT-CNL-GR
 BHC-GR
 NGT-C
 HDT
 WSS CST

PROGRAM
 TAPE NO:
 26.4
 SERVICE
 ORDER NO:

DATE: 20 JUL 85
 RUN NO: 1

DEPTH-DRILLER: 707.7 M
 DEPTH-LOGGER: 709.0 M
 BTM. LOG INTERVAL: 708.0 M
 TOP LOG INTERVAL: 121.0 M

CASING-DRILLER: 122 M
 CASING-LOGGER: 121 M
 CASING: 9 5/8"
 WEIGHT: 40.00 LB/F
 BIT SIZE: 12 1/4" 8 1/2"
 DEPTH: 124 M 707 M

TYPE FLUID IN HOLE: FRESH GEL POLYMER
 DENSITY: 1078 K/M3
 VISCOSITY: 40.0 S
 PH: 8.5
 FLUID LOSS: 10.0 C3
 SOURCE OF SAMPLE: PIT
 RM: 5.090 DHMM AT 18.0 DEGC
 RMF: 5.120 DHMM AT 18.0 DEGC
 RMC: 4.570 DHMM AT 18.0 DEGC
 SOURCE RMF/RMC: PRESS/PRESS
 RM AT BHT: 2.901 DHMM AT 47.7 DEGC
 RMF AT BHT: 2.924 DHMM AT 47.7 DEGC
 RMC AT BHT: 2.610 DHMM AT 47.7 DEGC

TIME CIRC. STOPPED: 0930/6
 TIME LOGGER ON BTM.: 2130/6

MAX. REC. TEMP: 47.7 DEGC

LOGGING UNIT NO: 2667
 LOGGING UNIT LOC: GEA
 RECORDED BY: J.A.ELLIS
 WITNESSED BY: M.SCHMEDJE

REMARKS:

GAMMA RAY AND CALIPER FROM LDT-CNL RUN

EQUIPMENT NUMBERS-

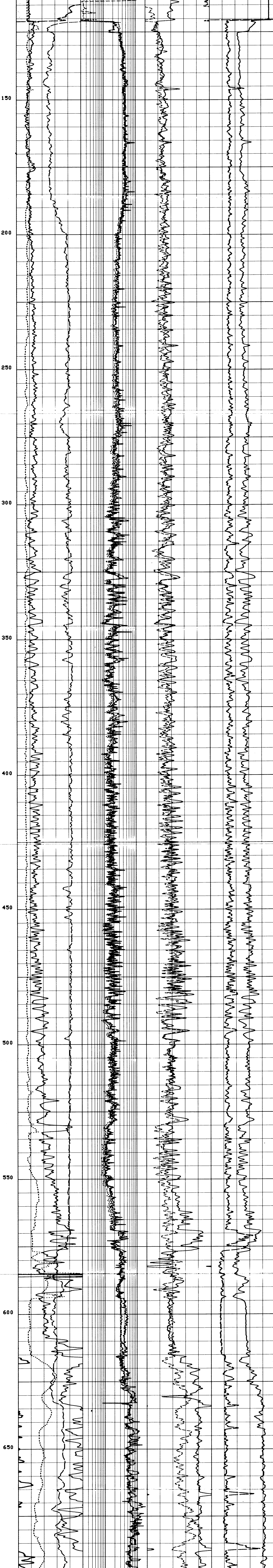
DLT-B SRS-A SP LDT-A
 CHT-A SGT-E SLT-N

ALL INTERPRETATIONS ARE OPINIONS BASED ON INFERENCES FROM ELECTRICAL OR OTHER MEASUREMENTS AND WE CANNOT, AND DO NOT GUARANTEE THE ACCURACY OR CORRECTNESS OF ANY INTERPRETATIONS, AND WE SHALL NOT, EXCEPT IN THE CASE OF GROSS OR WILLFUL NEGLIGENCE ON OUR PART, BE LIABLE OR RESPONSIBLE FOR ANY LOSS, COSTS, DAMAGES OR EXPENSES INCURRED OR SUSTAINED BY ANYONE RESULTING FROM ANY INTERPRETATION MADE BY ANY OF OUR OFFICERS, AGENTS OR EMPLOYEES. THESE INTERPRETATIONS ARE ALSO SUBJECT TO OUR GENERAL TERMS AND CONDITIONS AS SET OUT IN OUR CURRENT PRICE SCHEDULE.

CP 26.4 FILE 101 DATA ACQUIRED 06-JUL-85 18:01

DCAL(IN)	MSFL(DHMM)	NPHI	DT (US/F)
-1.000 9.0000	.20000 200.00		
GR (GAPI)	LD (DHMM)	RHOB(G/C3)	PEF
0.0 150.00	.20000 200.00	.60000 0.0	240.00 40.000
SP (MV)	LS (DHMM)		
-130.0 -30.00	.20000 200.00	1.7000 2.7000	0.0 10.000

CP 26.4 FILE 101 DATA ACQUIRED 06-JUL-85 18:01



CP 26.4 FILE 101 DATA ACQUIRED 06-JUL-85 17:03

DCAL(IN)	MSFL(DHMM)	NPHI	DT (US/F)
-1.000 9.0000	.20000 200.00		
GR (GAPI)	LD (DHMM)	RHOB(G/C3)	PEF
0.0 150.00	.20000 200.00	.60000 0.0	240.00 40.000
SP (MV)	LS (DHMM)		
-130.0 -30.00	.20000 200.00	1.7000 2.7000	0.0 10.000

PARAMETERS

NAME	VALUE	UNIT	NAME	VALUE	UNIT
MATR	LIME		HC	CALI	
MDEN	2.64000	G/C3	FD	1.00000	G/C3
LPCS	TWIN		WMUD	1078.00	K/M3
ITTS	DT		DHC	CALI	
DTH	56.0000	US/F	CDTS	100.000	
BHS	OPEN		DTF	189.000	US/F
BS	8.50000	IN	RT	3.00000	DHMM
PP	NDRM		DD	0.0	H

TAPE NOT MADE