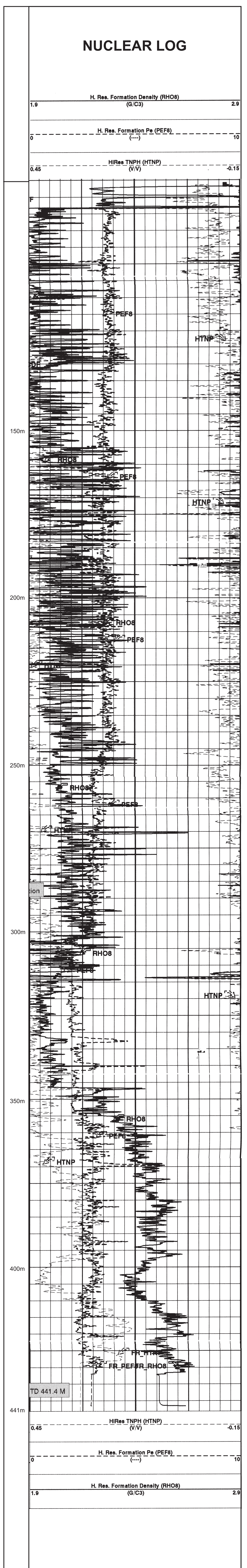
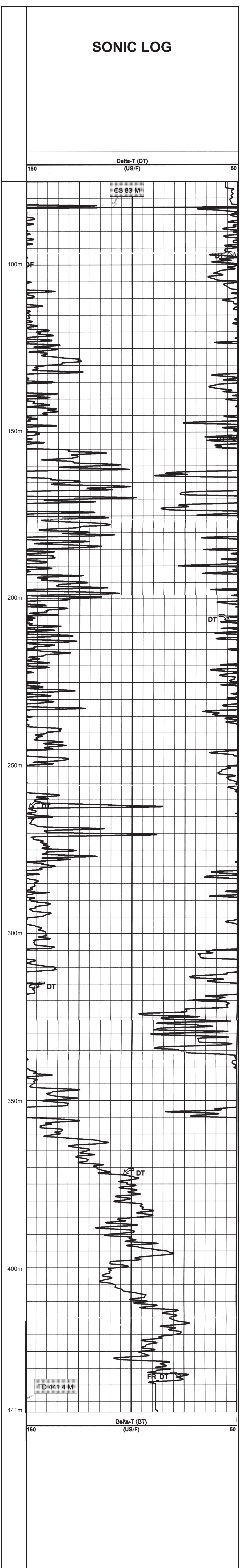
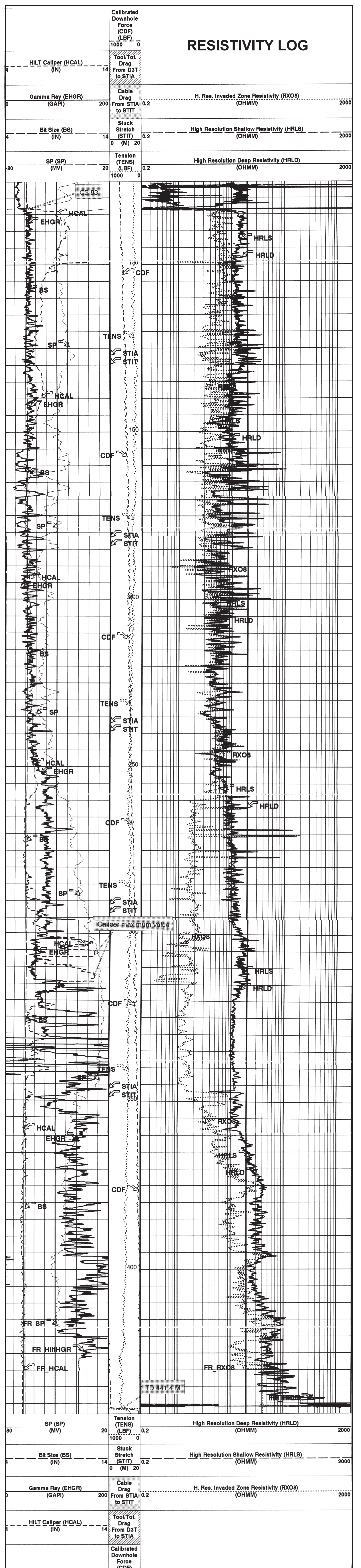




AGE	FORMATION	ROP (min/m)	GAS (units)	DEPTH	LITHOLOGY	CASING	CEMENT PLUGS	GEOLOGICAL DESCRIPTIONS
UNDIFF. TERTIARY	Tertiary Gravels			0 - 35m				CLAY : red, red brown, grey, soft, sticky below 45cm soil layer SANDSTONE: red brown, very fine grained, well sorted, subrounded, argillaceous
MIOCENE - OLIGOCENE	Gippsland Limestone			35m - 250m				LIMESTONE : Light grey, grey brown calcarenite consisting of unconsolidated fine to coarse grained, with occasional very coarse grained and pebble sized shell fragments, predominantly bryozoa & corals, gastropods, brachiopods & occasional forams. Good porosity. Traces of glauconite towards base. LIMESTONE : interbedded with SILTSTONE (calcisiltite) light grey occasionally white, calcareous speckled in part due to dark indeterminate inclusions, friable sl. Glauconitic, very sandy, grades to SANDSTONE : light grey, occasionally white, very fine grained, subrounded, calcareous, argillaceous, very silty, grades to calcisiltites as above. Some interbeds near base of unit MARL : grey green, soft, dispersive, slightly micaceous.
OLIGOCENE	Lakes Entrance			250m - 267m				MARL : grey green, soft, dispersive, slightly micaceous
EARLY OLIGOCENE - EOCENE	Latrobe Group			267m - 323m				GLAUCONITIC SANDSTONE : grey, grey brown, firm, consisting of well sorted very fine grained rounded quartz, with common shell fossils, glauconite, mica and occasional carbonaceous? Specks in a calcareous, slightly argillaceous matrix. Tight, no shows. Minor interbeds of limestone as above near the base of this unit. SAND : light grey, consisting of unconsolidated clear and rare grey sub-rounded fine to coarse to very coarse grained and gravel sized quartz grains. Excellent porosity, no shows. Traces of coal, black-brown soft. Very common pyrite nodules over the interval 321-345m. These produce violent fluctuations in the gamma ray log over this interval.
PALAEOZOIC				323m - 440m				SAND : light grey, consisting of unconsolidated clear and rare grey sub-rounded to rounded fine to coarse grained quartz grains. Common shell fragments and calcite. Excellent porosity, no shows. SANDSTONE : grey green, very fine grained, well sorted, slightly micaceous, siliceous. Tight. No shows.

COMPANY : Lakes Oil N.L.
RIG : Bourne 2000 THD
PERMIT : PEP 156, Victoria
COUNTRY : Australia
LOCATION : AMG 487829.35E 5729515.75N
LAT 37°51'04.2"S LONG 147°40'27.5"E

ELEV: G.L. 2.2 ASL
K.B. 3.7 ASL
SPUD DATE : 14/03/2003
TD DATE : 22/03/2003
TD DRILLER : 441.4m
LOGGED FROM : 83m
LOGGED TO : 439m
STATUS: Plugged & Abandoned



LEGEND

	Clay		Gravel Conglomerate		Dolomite
	Shale		Marl		Coal
	Silt Siltstone		Volcanic Rock		Glauconite
	Sand Sandstone		Limestone		