

COMPOSITE WELL LOG
 SOUTH AUSTRALIAN OIL & GAS CORPORATION, COMSERV (779)
MILDURA WEST - 2 W.C.R.
 MURRAY BASIN, VICTORIA

Location: LATITUDE - 34° 32' 29.04" S
 LONGITUDE - 141° 17' 54.92" E
 SEISMIC - 8

Geologist: R.J. SUTTILL
 Report: R.J. SUTTILL

Map: MU 000.2751 (MILDURA WEST 1 & 2 PROSPECT SHEET)
 Petroleum Tenement: P.E.P. 106 (VIC.)

Composite Log: R.J. SUTTILL

Electric Logs:
 SUITE No. 1: MCS 90.0m - 596.0m
 CCS Surface - 598.2m
 NS 19.0 - 598.0m
 FE 92.4m - 596.0m
 SP-RES 86.0m - 597.0m

Elevation: GL 58m KB 62.63m
 MSL 0m PORT ADELAIDE

Total Depth: 597.2m (Driller) 598.2m (Logger)

Date Spudded: 20th JUNE 1983
 Date Completed: 25th JUNE 1983

Well Status: PLUGGED AND ABANDONED

10 cm = 20m
 ENCLOSURE 1

Drafted: R. SCOTT Date: AUGUST 1983 Drawing No: MAW 002 2944

LEGEND

CORE
 CI C - (No) Core Number
 No Recovery

PLUG
 No Recovery

CASING SHOE

LITHOLOGY

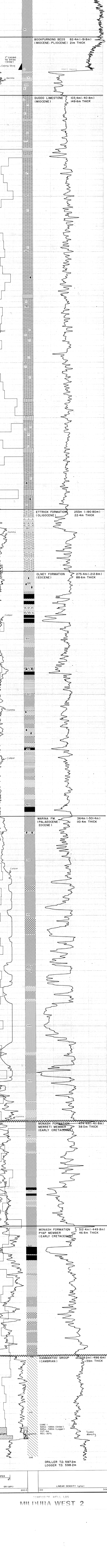
QUARTZ SANDSTONE
 1 Very coarse grained
 2 Coarse grained
 3 Medium grained
 4 Fine grained
 5 Very fine grained

CALCAREOUS SANDSTONE
 SILTSTONE (CARBONACEOUS)
 CLAYSTONE
 COAL
 LIMESTONE
 DOLOSTONE
 MARL
 PHYLLITE, SLATE

GLAUCONITE
 PYRITE
 FOSSILS
 CHERT

ALL DATA CORRECTED TO LOG DEPTHS

GAMMA RAY - LINEAR DENSITY LOG



DRILLER T.D. 597.2m
 LOGGER T.D. 598.2m