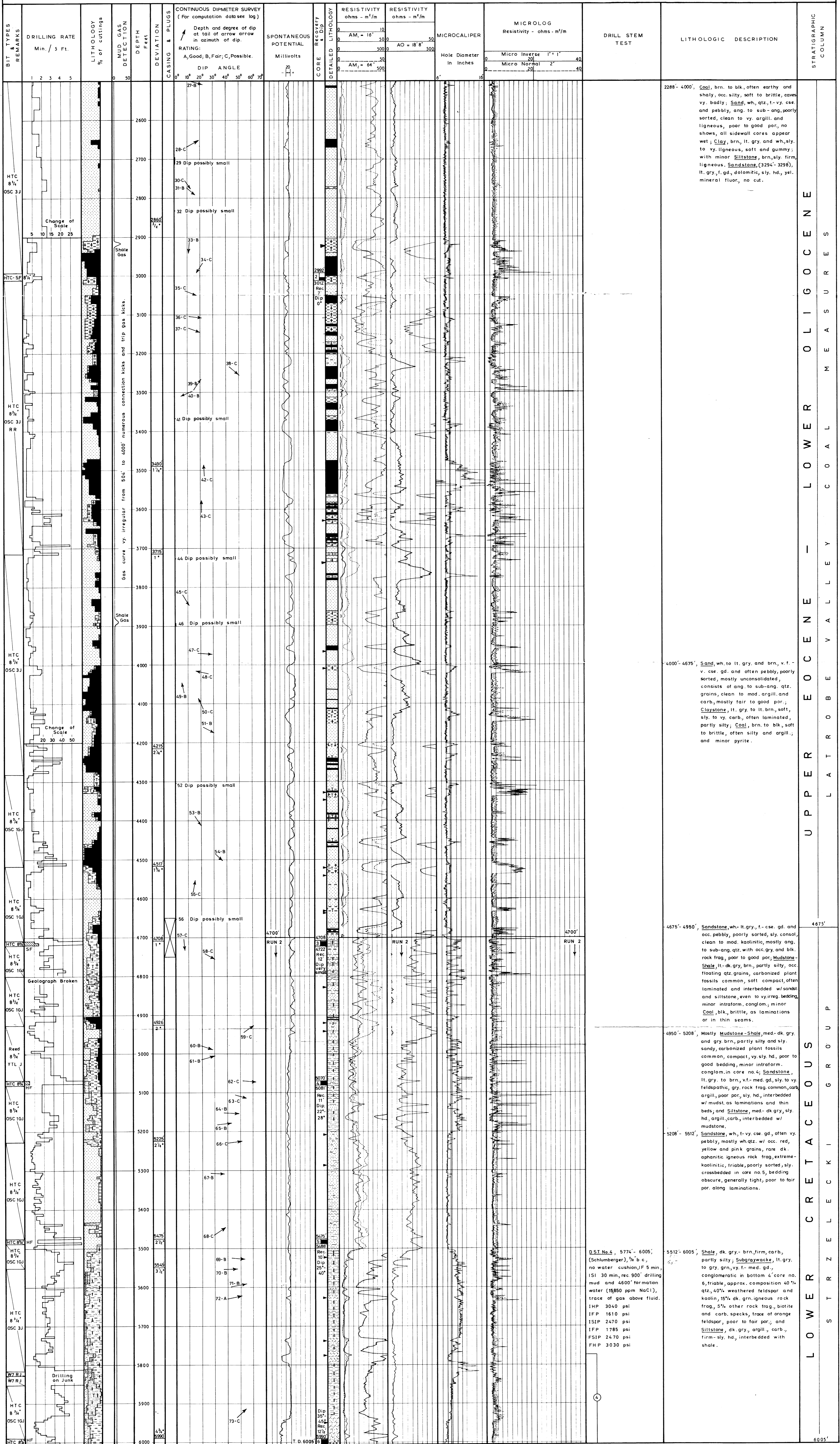


COMPOSITE WELL LOG
MERRIMAN NO. 1

2500' - 6005'
SHEET 2 OF 2



BIT TYPES REMARKS

DRILLING RATE Min. / 5 Ft.

LITHOLOGY % of cuttings

MUD GAS DETECTION

DEPTH Feet

DEVIATION & PLUGS

CASING & PLUGS

CONTINUOUS DIPMETER SURVEY (For computation data see log)

Depth and degree of dip at tail of arrow in azimuth of dip.

RATING: A, Good; B, Fair; C, Possible.

DIP ANGLE

SPONTANEOUS POTENTIAL Millivolts

CORE RECOVERY & DIP

RESISTIVITY ohms - m²/m

RESISTIVITY ohms - m²/m

MICROLOG Resistivity - ohms - m²/m

DRILL STEM TEST

LITHOLOGIC DESCRIPTION

STRATIGRAPHIC COLUMN

LOWER CRETACEOUS

UPPER EOCENE - LOWER OLIгоценE

LOWER EOCENE

LOWER OLIгоценE

D.S.T. No. 4, 5774' - 6005', (Schlumberger), 1/2" b.c., no water cushion, F 5 min, ISI 30 min, rec 900' drilling mud and 4600' formation water (15850 ppm NaCl), trace of gas above fluid. IHP 3040 psi IFP 1610 psi ISIP 2470 psi IFP 1785 psi FSIP 2470 psi FHP 3030 psi

5512' - 6005', Shale, dk. gry.-brn. firm, carb., partly silty; Subgraywacke, lt. gry. to gry. grn. v.f.-med. gd., conglomeratic in bottom 4' core no. 6, friable, approx. composition 40% qtz., 40% weathered feldspar and kaolin, 15% dk. grn. igneous rock frag., 5% other rock frag., biotite and carb. specks, trace of orange feldspar, poor to fair por.; and Siltstone, dk. gry., argill., carb., firm-sly. hd., interbedded with shale.

4950' - 5208', Mostly Mudstone-Shale, med-dk. gry. and gry. brn., partly silty and sly. sandy, carbonized plant fossils common, compact, v. sly. hd., poor to good bedding, minor intraform. conglom. in core no. 4; Sandstone, lt. gry. to brn., v.f.-med. gd., sly. to v.f. feldspathic, gry. rock frag. common, carb. argill., poor por., sly. hd., interbedded w/ mudst. as laminations and thin beds; and Siltstone, med-dk. gry., sly. hd., argill., carb., interbedded w/ mudstone.

4000' - 4675', Sand, wh. to lt. gry. and brn., v.f. - v. cse. gd. and often pebbly, poorly sorted, mostly unconsolidated, consists of ang. to sub-ang. qtz. grains, clean to mod. argill. and carb., mostly fair to good por.; Claystone, lt. gry. to lt. brn., soft, sly. to v. carb., often laminated, partly silty; Coal, brn. to blk., soft to brittle, often silty and argill.; and minor pyrite.

2286' - 4000', Coal, brn. to blk. often earthy and shaly, occ. silty, soft to brittle, caves v. badly; Sand, wh. qtz., f.-vy. cse. and pebbly, ang. to sub-ang., poorly sorted, clean to v. argill. and ligneous, poor to good por., no shows, all sidewall cores appear wet; Clay, brn., lt. gry. and wh., sly. to v. ligneous, soft and gummy; with minor Siltstone, brn., sly. firm, ligneous. Sandstone, (3294' - 3298), lt. gry., f. gd., dolomitic, sly. hd., yel. mineral fluor., no cut.