

# GEOGRAM\*

(Synthetic Seismogram)

WELL: MACALISTER #1 W.C.R.  
 FIELD: WILDCAT  
 COUNTRY: AUSTRALIA

Company: CRUSADER RESOURCES N.L.  
 Reference No: 569150 Interval: 1447.00 to 179.00  
 Date Logged: 02/04/88 Date Processed: 12/04/88  
 Location: 038 2T 02.36' S 147 08' 16.00" E  
 Elevations: KB: 20.00 DF: 19.50 GL: 16.00  
 Permanent Datum: MSL Depth Units: METRES

### LOG INFORMATION

FIELD RECORDING: Engineer: P.KITSON Location: VEA Program Version: 284  
 COMPUTATION: Analyst: M. SANDERS Centre: STJ Baseline: 6800X1  
 ELEVATION ABOVE MEAN SEA LEVEL  
 Logging Datum: 20.00  
 Seismic Reference Datum: 0.00  
 Sonic Calibration By: Check Shots YES Sonic Edited By: Analyst YES  
 Two-Way Time Sample Interval: 2 ms Environment: onshore

True Vertical Depth Corrections Applied:  
 Source of True Vertical Depth Data:  
 Maximum Hole Deviation:

Run	Date	Type	Bit Size/Depth	Casing Size/Depth	Top Depth	Bottom Depth
1	02-04-88	BHC	8 1/2" @ 1442 M	9 5/8" @ 1816 M	813 M	1447 M
VGR	Date	Gun	Hydro	Gun	Hydro	Gun
		OT/MI	OT/MI	Elevation	Elevation	Armin
1	02-04-88	33 M	3 M	1 M BELOW GL	1 M BELOW GL	0°

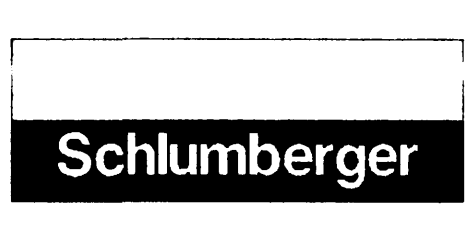
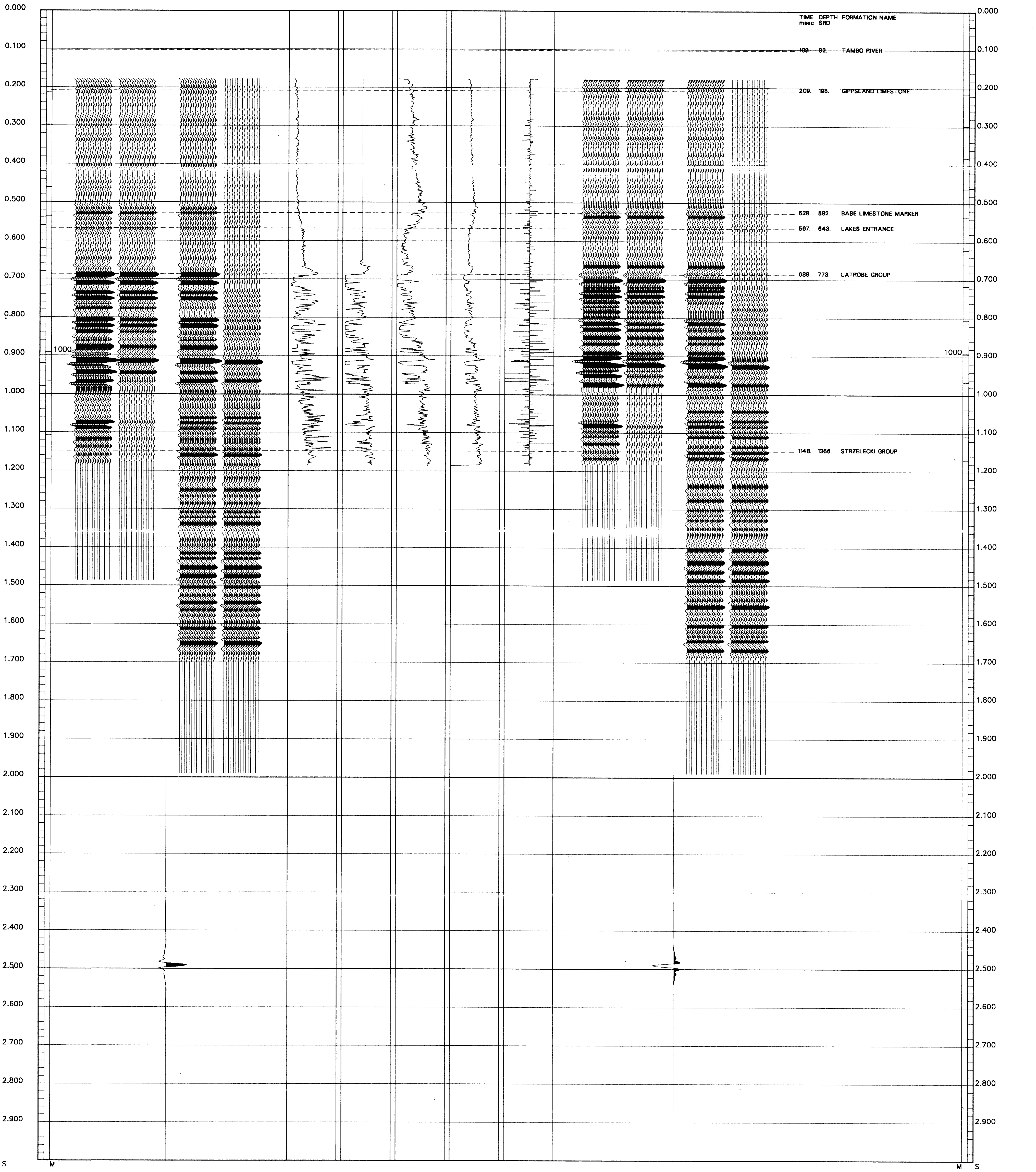
### GEOGRAM MODEL ASSUMPTIONS

Equal time slice model of horizontal plane layers.  
 Plane acoustic waves at normal incidence.  
 No intrinsic attenuation.  
**POLARITY**  
 An upgoing wave, reflected by an increase in acoustic impedance with depth, is displayed as a white trough under normal polarity.  
**SIGNATURES**  
 All signatures displayed in the Geogram results correspond to a wavelet convolved with a reflection coefficient of -0.5 (a decrease in acoustic impedance with depth).

The well name, location and borehole reference data were furnished by the customer.  
 All interpretations are opinions based on inferences from electrical or other measurements and we cannot, and do not guarantee the accuracy or correctness of any interpretations, and we shall not, except in the case of gross or willful negligence on our part, be liable or responsible for any loss, costs, damages or expenses incurred or sustained by anyone resulting from any interpretations made by any of our officers, agents or employees. These interpretations are also subject to Clause 4 of our General Terms and Conditions as set out in our current Price Schedule.

\*\* GEOGRAM \*\*  
 10-80 HERTZ ZERO PHASE BUTTERWORTH WAVELET  
 MACALISTER - 1

MULTIPLES ONLY REVERSE POLARITY
PRIMARIES AND MULTIPLES REVERSE POLARITY
SIGNATURE (-)VE REFL. COEFF.
PRIMARIES WITH TRANSMISSION LOSS NORMAL POLARITY
PRIMARIES NORMAL POLARITY
REFLECTION
ACOUSTIC IMPEDANCE
SONIC
DENSITY
GAMMA RAY



COMPANY CRUSADER RESOURCES N.L.  
 FIELD WILDCAT  
 WELL MACALISTER #1  
 COUNTRY AUSTRALIA