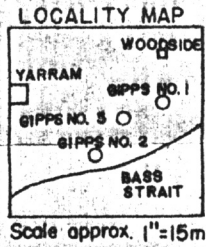


FROME LAKES PTY. LTD.  
GIPPSLAND No. 3

State VICTORIA  
County BULN BULN  
Parish BALLOONG  
Location 580' East of S.W. Corner  
Allot. 22a - Crown land  
Elevation 30' D.F.

Comm. 15-11-56 Comp. 30-11-56  
T.D. 1876' 6"

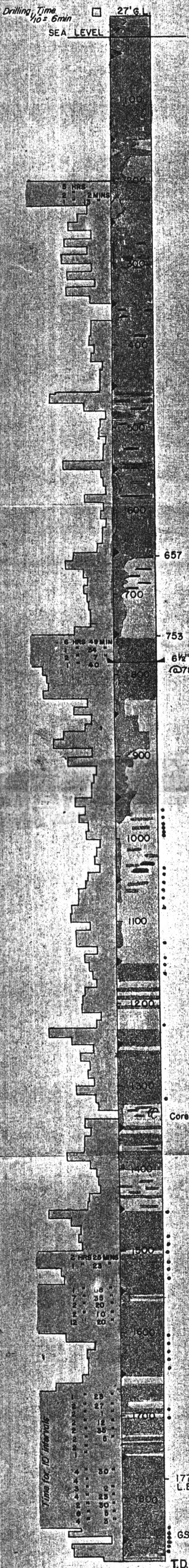
Casing Record 6 1/2 @ 783 with 100 sacks of cement



REMARKS

EXPLORATION WELL

R.L.W. Nov., 1956



*Sandy clay - yellow brn crse rnd qtz grains imbedded in soft arg material*  
*Sand - yellow vcrse to granule subrd qtz grains w/ some arg cement*  
*Sand - lt gry crse to vcrse subang clear qtz grains*  
*Gravel - pale yellow to lt gry subrd opaque qtz gravel*  
*Sandstone - tan to buff med to vcrse subang arg qtz ss w/ several lrg granules of qtz*  
*Sand - lt gry to wh vcrse to granule rnd loose opaque qtz sd*

*Gravel - wh and lt gry crse well rnded pebble gravel*  
*Sand - bright yellow to orange brn iron std crse ang loose qtz sand*  
*Sand - pale yellow to lt gry med to crse ang to subang loose qtz sand*

*Sand - yellow to orange std med to crse subrd loose qtz sand*  
*Sandstone - yellow to orange vt-f subrd arg ss bands - trace of pyritic ss*  
*Sdy marl - lt brn vry sdy highly shelly marl - only traces of marl - mainly shells*  
*Sandstone - pale yellow brn vt-f subrd cal ss w/ traces of shell frags*  
*Sandy marl - lt gry vt sdy highly shelly marl - sample mainly dk blue well rolled oyster shell fragments*

*Limestone - lt gry to reddish tan crse granular sli sdy hrd foramineral ls*  
*Marly sand - lt gry f - med rnd qtz sand in a loosely cemented shelly marl - Turritella*  
*Sand - lt gry f - med rnd - subrd loose qtz sand*

*Sand - lt brn ligneous std lt gry frnd qtz sd - traces of pyritic brn coal*  
*Increasing bands of highly pyritic brn coal*  
*Traces of shelly and many yellow, red and orange qtz grains*  
*Sand - lt gry to dk blue vt-f med well rnded salt and pepper sand*

*Sand - red, yellow, orange, gry and white grains of fine sd w/ some blk glossy fibrous carb. matter traces of shell frags*  
*Sand - lt gry vt-f well rnded opaque salt and pepper sd w/ blk carb. specks - loose sand is sli milky and frosted - well sorted and possibly wind blown*

*Brown coal - above vt-f well rnded salt and pepper sand w/ bands of pyritic brn coal*  
*Sand and brown coal - lt gry slightly brn std med-crse well rnded to spherical milky qtz sand*

*Sand - lt gry - brn std vcrse rnd lignitic qtz sand w/ traces of shells*  
*Brown coal - dk brn to blk soft vry sandy brn coal*  
*Lignitic sand - brn std vcrse - granule well rnded glossy sli purple qtz w/ traces of pyrite and pyritic brn coal*  
*Sand - same as above but med-crse in size*  
*Sand and brn coal*  
*Sand - brn std purple vcrse well rnded - spherical milky qtz - some fractured grains*  
*Sand - brn std f - med rolled sand w/ many vcrse granules 3-4 / 32"*  
*No marine indications*

*Sandy marl - lt gry soft vry sdy marl w/ small fragile whole pelecypod shells first appearance of marine life since entered brown coal*  
*Sandy marl - many shell frags - Turritella and bryozoa - marl is still ligneous - facies change contains glossy blk fibrous carbonaceous material*

*Sdy marl - gry soft sdy highly foss marl w/ small completely whole gastropods Ditrupa tubes, lrg pelecypods, bryozoa, forams and ang frags of lrg shells marl still quite carb - blk glossy carb material*  
*Sdy marl - gry finer grained less sandy foss marl*  
*Limestone - lt gry to pale yellow crsly granular vry hrd foss ls w/ white and yellow foss casts - some Ditrupa tubes tightly cemented - sli por - vt vry hrd sli sdy ls*

*Marl - lt gry f granular soft por sdy marl made up of f foss frags*  
*Sdy marl - above marl but w/ high % of granules 4-6 mm of well rounded well sorted yellow glossy qtz - increasing amounts of granules w/ depth all well rolled w/ some white and grey granules - increasing number of gastropods*

*Marl - tan - lt brn soft granular por polyzoal marl w/ many granules glossy qtz and foss frags - many turritella - some small blk carb specks*  
*Marl - many cream coloured turritella fragments among granules of wh yellow qtz*

*Marl - lt tan soft polyzoal marl w/ increasing amounts of glauc - hrd bands of gry blue cal shelly zones*  
*Marl - contains increasing amounts of med size dk grn glauc grains*  
*Marl - yellow orange soft por sli sdy arg marl - yellow arg material w/ many ls foss frags*

*Marl - lt gry sli sdy and limy soft w/ many grains of ls and sd and some glauc - traces of ligneous clay*

*Marl - lt gry soft sli sdy marl w/ many med rnd grains of glauc*  
*Marl - lt gry soft foraminiferal glauc marl w/ gypsum needles*

*Marl - lt gry soft polyzoal por marl w/ glauc grains*  
*Limestone - lt gry - white hrd polyzoal glauc ls*  
*Ls - lt brn cxln foss glauc ls*  
*Ls and marl - bands of hrd lt brn ls in soft lt gry - brn polyzoal marl*

*Marl - tan - lt gry soft por foss sli glauc marl*  
*Limestone - tan - lt gry hrd cxln foss ls*

*Ls - wh - lt gry hrd foss cxln ls*  
*Ls - white f gran highly foss ls w/ forams and many bryozoa stems*

*Ls - wh por hrd f granular polyzoal sli glauc ls*  
*Marl - lt gry tan soft sli sdy foss sli ligneous marl w/ hrd G. 1329 - 35. Rec 16 w/ soft sli glauc marl 6' marl with bands of brn hrd ligneous matter with strong H<sub>2</sub>S odor*  
*Ls - wh c granular hrd foraminiferal ls w/ bands of softer sli ligneous marl*

*Marl - lt brn vt granular soft por marl w/ many vt cal xls - screen samples glisten and sparkles reflecting light from many xl faces - some hrd lt brn cxln foss ls bands*

*Limestone - tan - gry cxln polyzoal hrd ls w/ trace of glauc*

*Ls - cream to buff med granular hrd polyzoal ls w/ glauc*  
*Ls - tan - lt gry c granular lt hrd ls w/ trace glauc and specks of blk carbonaceous matter - trace of mica*  
*Ls - some bands of gry vt vry hrd f xln sli foss ls*  
*Ls - wh f granular to f xln hrd clean polyzoal glauc ls*  
*Ls - wh semi xln clean hrd ls w/ traces of granules qtz sd - small coiled forams w/ cal matrix holding tang vari-coloured sd grains to forams*  
*Marl and ls - wh - buff soft marl w/ many ang granules of red qtz - hrd ls bands*  
*Limestone - gry hrd cxln highly foss well cemented sli glauc ls*  
*Ls - pale yellow - wh med granular por polyzoal ls w/ yellow arg fillings*  
*Ls - pure wh f - med granular porous hrd sli glauc polyzoal ls*

*Polyzoal ls*  
*Marl - gry - tan f - granular highly foss soft marl w/ hard xln ls bands*  
*Polyzoal ls*  
*Marl - gry to tan f granular foss soft marl*  
*Ls - brn cxln hrd foss night sli glauc ls - sugary textured*  
*Marl - brn soft highly - foss sli glauc marl w/ bands of brn hrd vt granular sucrosive dolomite - sugary textured*  
*Sand - rnd vcrse angular loose qtz sand*  
*Marl - brn soft foss sli pyritic marl w/ dolomite bands*  
*Marl - gry to brn soft pyritic rough textured marl w/ blk and wh specks*  
*Marl - becoming finer and smoother in texture*  
*Marl - lt gry grn t - vt velvety textured soft argillaceous - sli micaceous marl w many wh cal foss casts and forams*

*Marl becomes greener and more pyritic with depth*  
*Marl - same as above but becoming highly glaucous - many loose crse rnd grains*  
*Sandstone - lt gry f subrd sli por soft cal sandstone w/ crse rnd grains of dk grn glauc and clusters of pyrite - no staining - or shows of oil or gas*  
*Marl - lt gry vt tex arg marl w lrg rnd qtz granules imbedded*  
*Brown coal*

FROME LAKES -  
GIPPSLAND No. 3  
LITHOLOGICAL LOG  
PLATE 3



OIL and GAS DIVISION  
R.L. WOOD REPORT