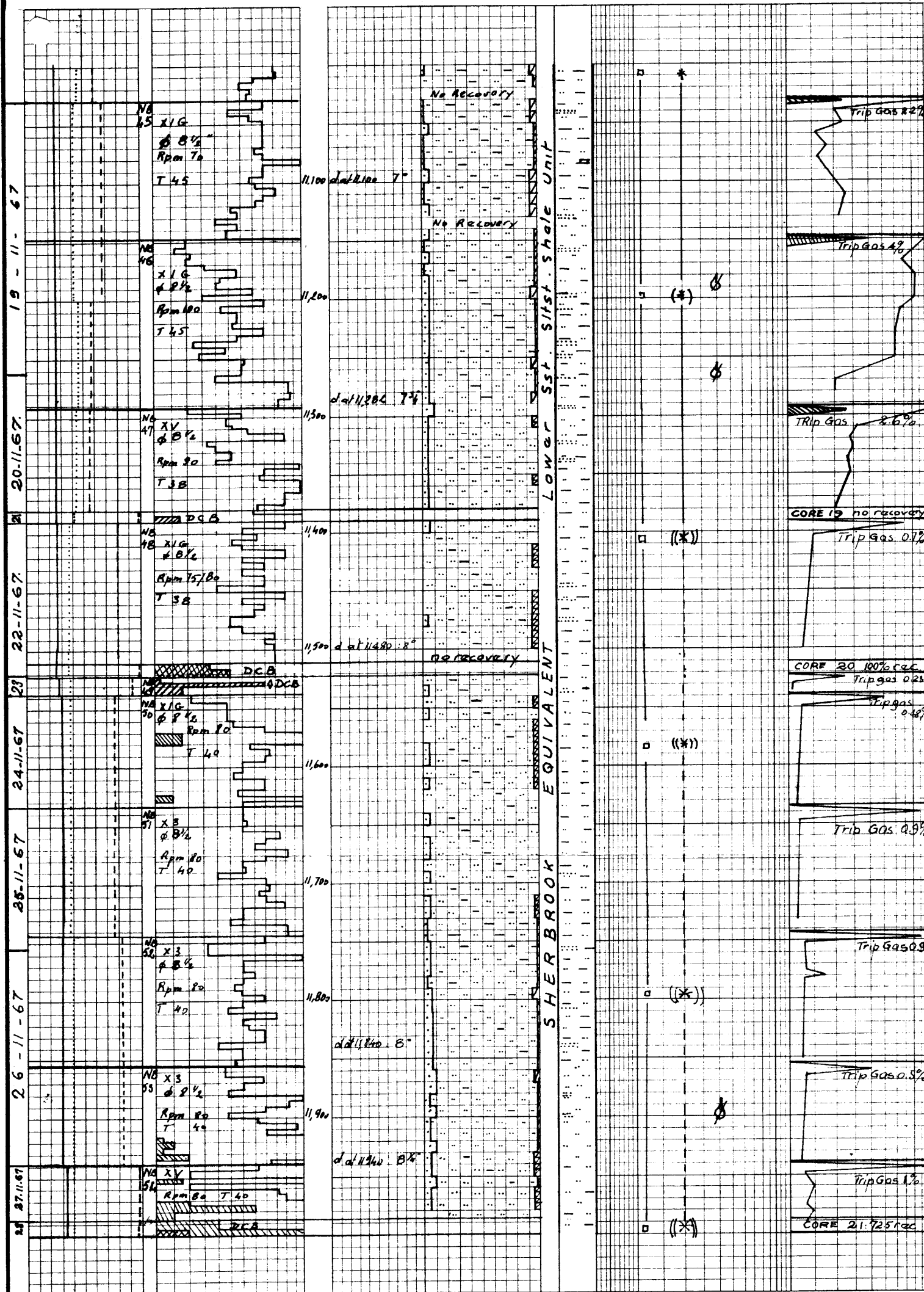


VOLUTA-1

DEPT. NAT. RES & ENV



PE600396



Inoceram Prisms

Siltst, dens, cons dk gy, cl-cl with cl lenses, f qtz grains, fld, some gr lit grains, rare red grains, carb, Pyr nod and lenses, G1c, rare Mic. Moderate small nod and patches of, qtz, fld, lit Sst, f grained. Note. G1c decreasing and becoming rare in core 20.

Presence of nod of brn Silt + Dol + Calc, xln, hd, silt, occa²lc

11511'
11523'

Siltst as above but becoming s to occa. s

11988' Siltst, cl-cl as above
11999' Dol nod