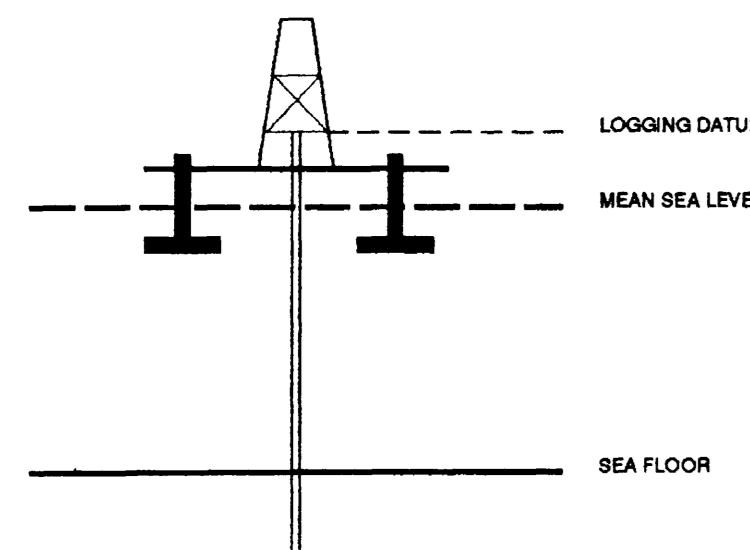


SEISMIC CALIBRATION LOG

(Adjusted Continuous Velocity Log)

Company: BHP PETROLEUM
 Well: MINERVA -2A
 Field: WILDCAT
 Country: AUSTRALIA
 Reference No: 560960 Interval: 2160.00 to 600.00
 Date Logged: 14-OCT-1993 Date Processed: 23/10/93
 Location: 142 57' 20.80" N 38 43' 04.54" E
 Elevations: KB: 25.30 DF: 25.00 GL: -85.00
 Permanent Datum: MSL Depth Units: METRES
 FIELD RECORDING: Engineer: M.HELWIG Location: Program Version: 32.2
 COMPUTATION: Analyst: Z.KATELIS Centre: SYJ Baseline: 20.4

ELEVATION ABOVE MEAN SEA LEVEL
 Logging Datum: 25.00
 Seismic Reference Datum: 0.00



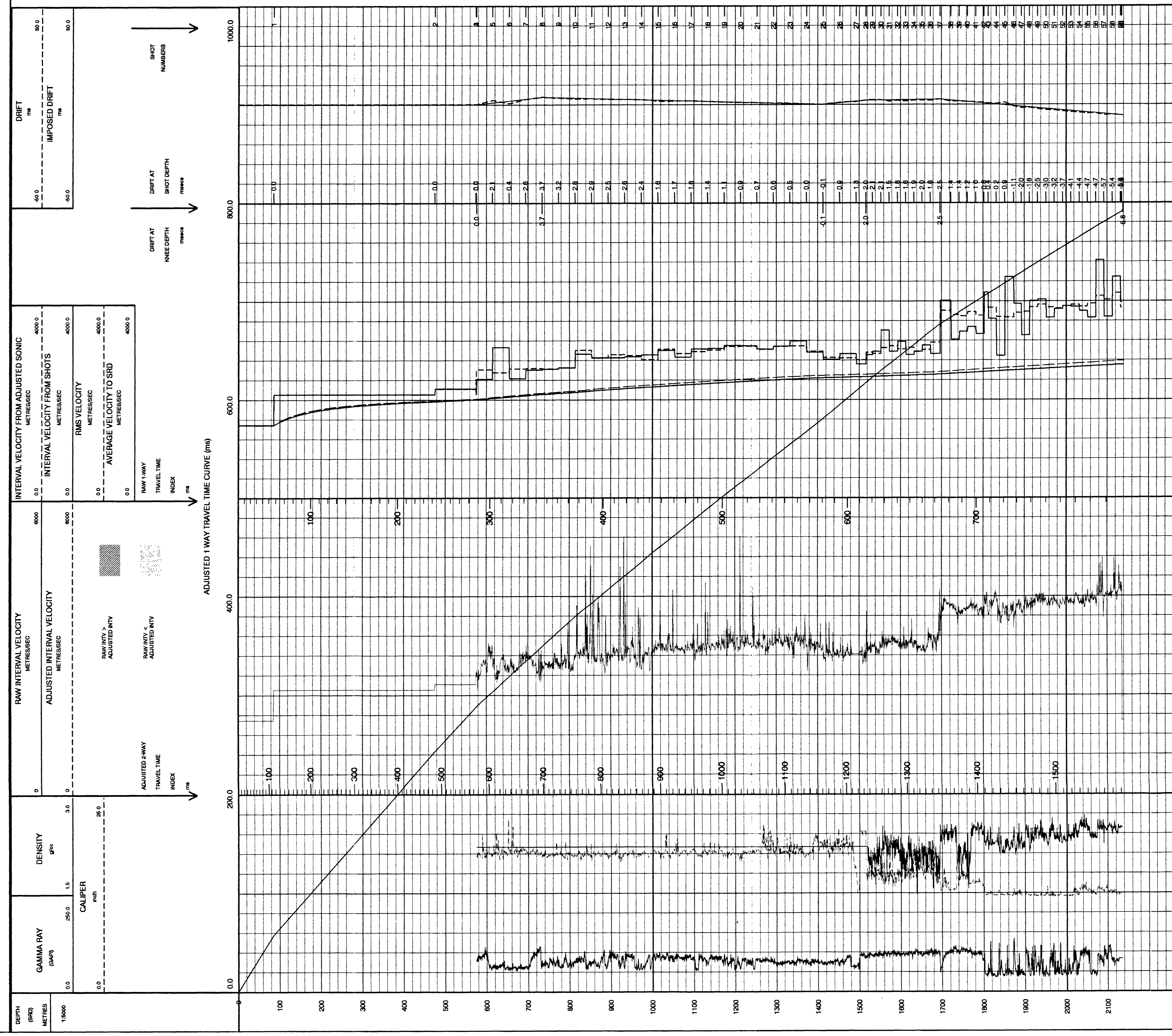
Total Number of Levels: 57
 Depth Reference: SRD
 Time Reference: SRD

Run	Date	Tool Type	Bit Size/ Depth	Casing Size/ Depth	Top Depth	Bottom Depth
VSP Run	Date	Gun Offset	Hydro Offset	Gun Elevation	Hydro Elevation	Gun Azimuth
1	14-10-93	47 M	47 M	5 BELOW MSL	12 M BELOW MSL	50.0

REMARKS

The well name, location and borehole reference data were furnished by the customer.

All interpretations are opinions based on information from electrical or other measurements and we cannot, and do not guarantee the accuracy or correctness of any interpretations, and we shall not, except in the case of gross or willful negligence on our part, be liable or responsible for any loss, costs, damage or expense incurred or sustained by anyone resulting from any interpretations made by any of our officers, agents or employees. These interpretations are also subject to Clause 4 of our General Terms and Conditions as set out in our current Price Schedule.



COMPANY: BHP PETROLEUM
 FIELD: WILDCAT
 WELL: MINERVA -2A
 COUNTRY: AUSTRALIA