

16 MELBOURNE LOG INTERPRETATION CENTRE PE300886

**Schlumberger**

# VERTICAL SEISMIC PROFILE

**ZERO OFFSET VSP PLOT 2**

## AMPLITUDE RECOVERY

Company: BHP PETROLEUM  
Well: MINERVA 1  
Field: EXPLORATION  
Country: AUSTRALIA

Reference No: 560896 Interval: 2405.00 to 551.00  
Date Logged: 05-04-93 Date Processed: 20-04-94  
Location: 38 42' 12.23" S 142 57' 12.34" E  
Elevations: KB: 25.30 DF: 25.00 GL: 57.00  
Permanent Datum: MSL Depth Units: METRES

FIELD RECORDING	Engineer	M MELWIG	Location	VEA	Program Version	32.4
COMPUTATION	Analyst	A WIBISONO	Centre	STJ	Baseline	5.5

ELEVATION ABOVE MEAN SEA LEVEL

Logging Datum: 25.00  
Seismic Reference Datum: 0.00

LOGGING DATUM  
MEAN SEA LEVEL  
SEA FLOOR

Total Number of Levels: 100  
Depth Reference: SRD  
Time Reference: SRD

Run	Date	Tool Type	Bit Size/Depth	Casing Size/Depth	Top Depth	Bottom Depth
1	14-03-93	AS	1183 M		551 M	
2	21-03-93	AS		1793 M	1195 M	
3	25-03-93	AS		2084 M	1793 M	
4	05-04-93	AS			2112 M	2084 M

VSP Run	Date	Gun Offset	Hydro Offset	Gun Elevation	Hydro Elevation	Gun Azimuth	Hydro Azimuth
1	14-03-93	47 M	47 M	7 M BELOW MSL	14 M BELOW MSL	50	50
2	22-03-93	47 M	47 M	7 M BELOW MSL	14 M BELOW MSL	50	50

REMARKS

FOUR HERE

All interpretations are opinions based on information from electrical or other measurements and are not guaranteed. The accuracy or completeness of any interpretations, and we shall not, except in the case of gross or willful negligence on our part, be liable or responsible for any loss, costs, damages or expense incurred or sustained by anyone resulting from any interpretations made by any of our officers, agents, or employees. These interpretations are also subject to Clause 4 of our General Terms and Conditions as set out in our current Price Schedule.

**\* AMPLITUDE RECOVERY \***  
VERTICAL COMPONENT.

PROCESSING SEQUENCE:  
MEDIAN STACK APPLIED  
STATIC CORRECTION TO MSL: 9.18 MS  
BAND PASS FILTER : 5-100 HZ  
NORMALISATION GATE : 100 MS  
TIME VARYING GAIN : T/T0\*\*1.00

VERTICAL SCALE : 10 CM/SEC  
POLARITY (S.E.G.) : REVERSE

**\* AMPLITUDE RECOVERY \***  
VERTICAL COMPONENT.

PROCESSING SEQUENCE:  
MEDIAN STACK APPLIED  
STATIC CORRECTION TO MSL: 9.18 MS  
BAND PASS FILTER : 5-100 HZ  
NORMALISATION GATE : 100 MS  
TIME VARYING GAIN : T/T0\*\*1.00

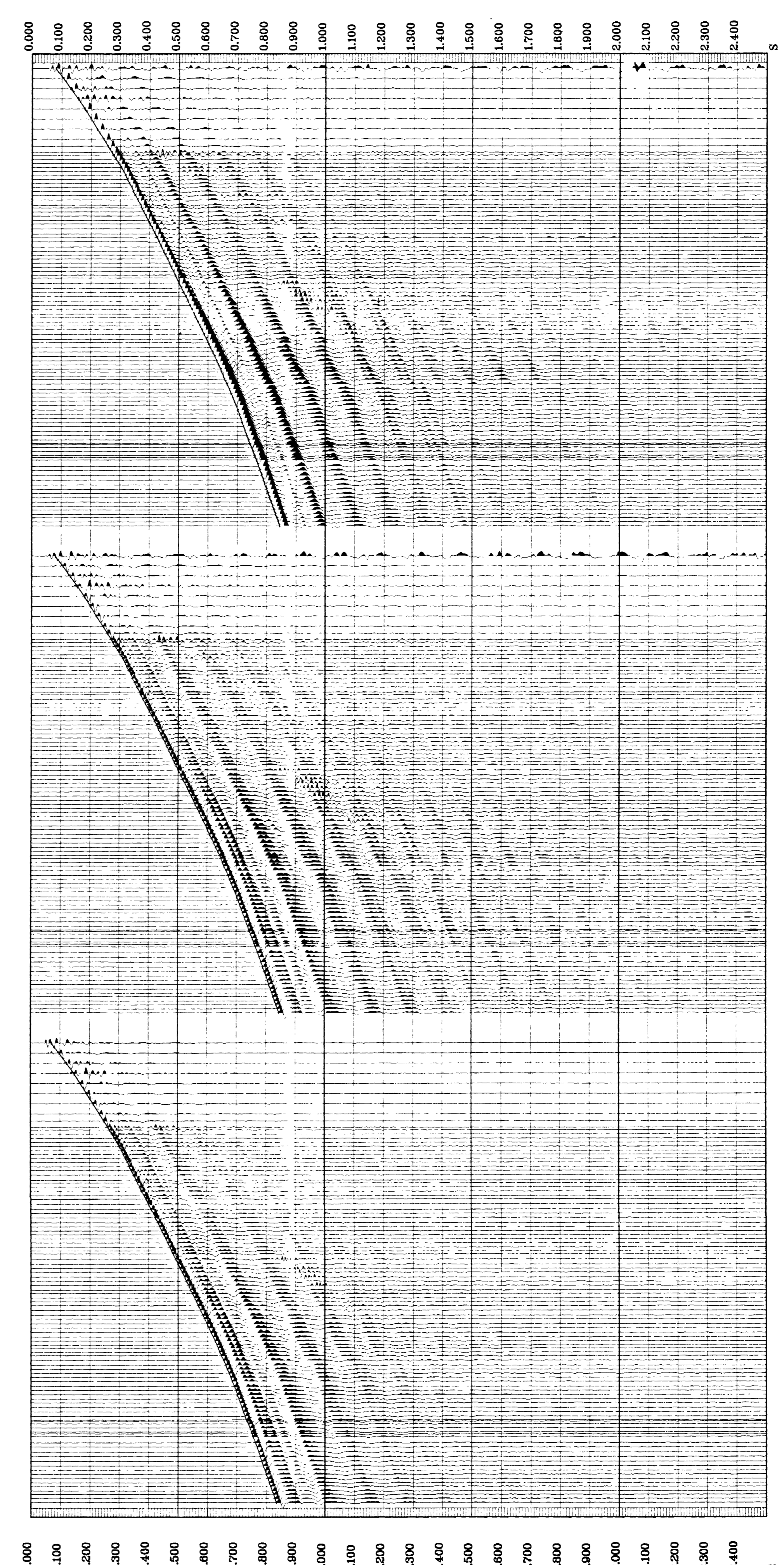
VERTICAL SCALE : 10 CM/SEC  
POLARITY (S.E.G.) : NORMAL

**\* STACKED DATA \***  
VERTICAL COMPONENT.

PROCESSING SEQUENCE:  
MEDIAN COHERENCY STACK APPLIED  
NO STATIC CORRECTION APPLIED  
BANDPASS FILTER : 4 - 120 HZ

VERTICAL SCALE : 10 CM/SEC  
POLARITY (S.E.G.) : NORMAL

RAW DEPTH M	TRUE VERTICAL DEPTH MSL M	TRANSIT TIME S	LEVEL NO	MAX AMPLITUDE	MIN AMPLITUDE
150.0	125.0	0.081	101	129.77	-110.58
200.0	175.0	0.107	100	145.00	-77.11
250.0	225.0	0.132	99	153.14	-82.58
300.0	275.0	0.157	98	174.70	-104.47
350.0	325.0	0.180	97	128.64	-74.41
400.0	375.0	0.201	96	136.13	-80.97
450.0	425.0	0.223	95	125.23	-81.13
500.0	475.0	0.245	94	129.07	-79.90
550.0	525.0	0.268	93	130.97	-82.15
600.0	575.0	0.289	92	128.24	-103.86
650.0	625.0	0.309	91	128.44	-81.56
700.0	675.0	0.329	90	138.19	-79.18
750.0	725.0	0.348	89	125.54	-80.20
800.0	775.0	0.367	88	131.92	-80.08
850.0	825.0	0.385	87	122.54	-80.20
900.0	875.0	0.403	86	135.62	-86.84
950.0	925.0	0.420	85	128.49	-82.03
1000.0	975.0	0.437	84	136.52	-85.89
1050.0	1025.0	0.453	83	132.70	-84.08
1100.0	1075.0	0.469	82	148.30	-83.77
1150.0	1125.0	0.484	81	118.30	-89.47
1200.0	1175.0	0.499	80	113.35	-82.99
1250.0	1225.0	0.513	79	107.13	-86.73
1300.0	1275.0	0.527	78	104.32	-88.81
1350.0	1325.0	0.540	77	105.21	-85.08
1400.0	1375.0	0.552	76	102.06	-84.43
1450.0	1425.0	0.564	75	97.72	-81.42
1500.0	1475.0	0.575	74	93.01	-82.55
1550.0	1525.0	0.586	73	85.33	-81.34
1600.0	1575.0	0.597	72	89.43	-78.97
1650.0	1625.0	0.607	71	74.26	-73.18
1700.0	1675.0	0.617	70	75.22	-72.18
1750.0	1725.0	0.626	69	70.29	-72.54
1800.0	1775.0	0.635	68	70.29	-80.30
1850.0	1825.0	0.643	67	69.82	-66.54
1900.0	1875.0	0.651	66	71.84	-66.57
1950.0	1925.0	0.658	65	68.91	-65.10
2000.0	1975.0	0.665	64	73.58	-65.84
2050.0	2025.0	0.672	63	75.58	-68.30
2100.0	2075.0	0.679	62	76.87	-65.30
2150.0	2125.0	0.685	61	79.46	-65.12
2200.0	2175.0	0.691	60	79.87	-64.58
2250.0	2225.0	0.697	59	74.34	-63.95
2300.0	2275.0	0.702	58	81.21	-63.11
2350.0	2325.0	0.707	57	85.03	-64.18
2400.0	2375.0	0.711	56	87.48	-60.17
2450.0	2425.0	0.715	55	90.88	-57.10
2500.0	2475.0	0.719	54	90.88	-58.86
2550.0	2525.0	0.722	53	83.10	-58.74
2600.0	2575.0	0.725	52	85.74	-58.10
2650.0	2625.0	0.728	51	86.22	-60.24
2700.0	2675.0	0.731	50	88.89	-58.13
2750.0	2725.0	0.733	49	101.11	-60.81
2800.0	2775.0	0.735	48	98.91	-58.97
2850.0	2825.0	0.736	47	109.61	-61.95



COMPANY: BHP PETROLEUM  
FIELD: EXPLORATION  
WELL: MINERVA 1  
COUNTRY: AUSTRALIA

**Schlumberger**