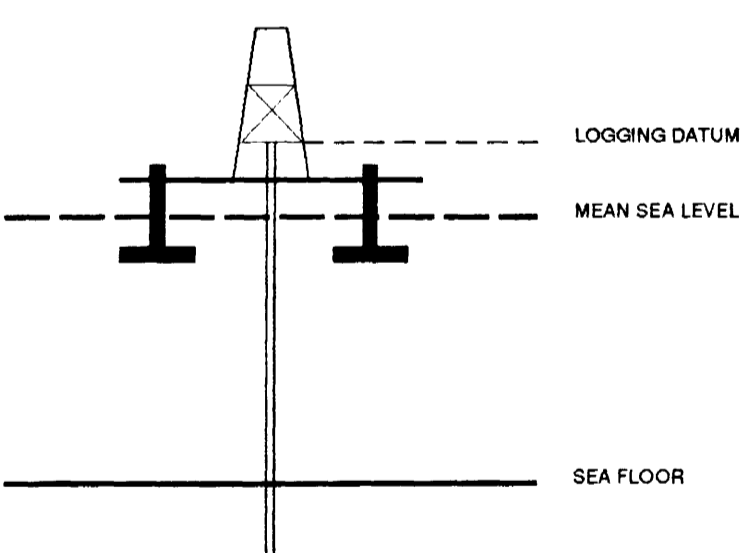


**ZERO OFFSET VSP PLOT 1**

**STACKED DATA**

Company: BHP PETROLEUM  
 Well: LA BELLA-1  
 Field: WILDCAT  
 Country: AUSTRALIA  
 Reference No: 560875 Interval: 2743.00 to 620.00  
 Date Logged: 11-FEB-1993 Date Processed: 17/2/92  
 Location: 39 00' 14.2" S 142 41' 42.9" E  
 Elevations: KB: 25.30 DF: 25.00 GL: -95.00  
 Permanent Datum: MSL Depth Units: METRES  
 FIELD RECORDING Engineer: M HELWIG Location: Program Version: 580-325  
 COMPUTATION Analyst: Z KATELIS Centre: SYJ Baseline: 20.2

ELEVATION ABOVE MEAN SEA LEVEL  
 Logging Datum: 25.00  
 Seismic Reference Datum: 0.00



Total Number of Levels: 110  
 Depth Reference: SRD  
 Time Reference: SRD

Run	Date	Tool Type	Bit Size/Depth	Casing Size/Depth	Top Depth	Bottom Depth
1	30-1-93	AS			1787	120
2	8-2-93	SDT			2375	1785.5

VSP Run	Date	Gun Offset	Hydro Offset	Gun Elevation	Hydro Elevation	Gun Azimuth	Hydro Azimuth
1	30-JAN-1993	47 M	47 M	10 M BELOW MSL	17 M BELOW MSL	50.0	50.0
2	11-FEB-1993	47 M	47 M	10 M BELOW MSL	17 M BELOW MSL	50.0	50.0

All interpretations are opinions based on information from electrical or other measurements and we cannot, and do not guarantee the accuracy or correctness of any interpretations, and we shall not, except in the case of gross or willful negligence on our part, be liable or responsible for any loss, costs, damages or expenses incurred or sustained by anyone resulting from any interpretations made by any of our officers, agents or employees. These interpretations are also subject to Clause 4 of our General Terms and Conditions as set out in our current Price Schedule.

FOLD HERE

**\*\* MEDIAN STACK \*\***

M#EDIAN COHERENCY STACK OF THE #DOWNHOLE VERTICAL COMPONENT.

PROCESSING SEQUENCE:  
 MEDIAN COHERENCY STACK APPLIED

VERTICAL SCALE : 10 CM/SEC  
 POLARITY (S.E.G.) : REVERSE

T#IMES REFERENCED TO HYDROPHONE

**\*\* MEDIAN STACK \*\***

M#EDIAN COHERENCY STACK OF THE #DOWNHOLE 2. HORIZONTAL COMPONENT

PROCESSING SEQUENCE:  
 MEDIAN COHERENCY STACK APPLIED

VERTICAL SCALE : 10 CM/SEC  
 POLARITY (S.E.G.) : REVERSE

T#IMES REFERENCED TO HYDROPHONE

**\*\* MEDIAN STACK \*\***

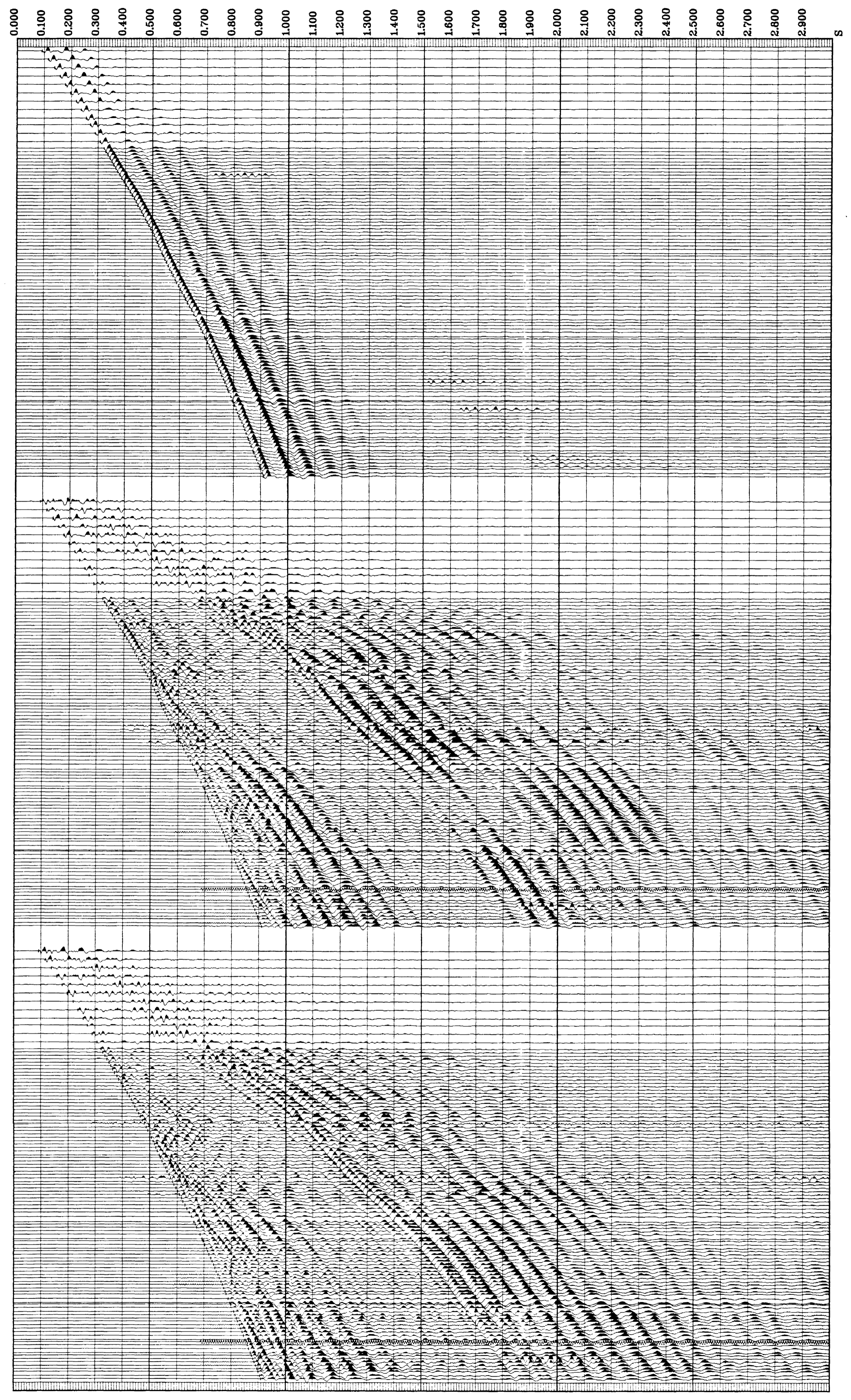
M#EDIAN COHERENCY STACK OF THE #DOWNHOLE 1. HORIZONTAL COMPONENT

PROCESSING SEQUENCE:  
 MEDIAN COHERENCY STACK APPLIED

VERTICAL SCALE : 10 CM/SEC  
 POLARITY (S.E.G.) : REVERSE

T#IMES REFERENCED TO HYDROPHONE

RAW DEPTH M	TRANSIT TIME S	LEVEL NO	MIN AMPLITUDE	MAX AMPLITUDE
300.0	0.092	111	-6015.969	1104.7519
250.0	0.116	110	-5085.400	8710.561
300.0	0.139	109	-4205.417	7231.850
350.0	0.159	108	-3353.152	5714.380
400.0	0.179	107	-3019.070	5446.998
450.0	0.198	106	-2532.788	4108.879
500.0	0.219	105	-2415.784	4341.485
550.0	0.238	104	-2861.066	4615.970
600.0	0.257	103	-2983.880	4291.064
650.0	0.276	102	-3438.310	3843.071
700.0	0.290	101	-1098.108	3404.523
750.0	0.307	100	-16538.578	2852.288
800.0	0.320	99	-1313.805	2427.040
850.0	0.344	98	-1103.230	1954.764
900.0	0.358	97	-1068.552	1727.253
950.0	0.372	96	-1014.017	1785.286
1000.0	0.387	95	-995.628	1750.000
1050.0	0.404	94	-871.838	1582.286
1100.0	0.420	93	-814.841	1551.858
1150.0	0.434	92	-658.415	1652.942
1200.0	0.447	91	-682.418	1229.087
1250.0	0.461	90	-621.198	176.628
1303.0	0.476	89	-583.488	1261.79
1340.0	0.488	88	-583.397	1109.281
1390.0	0.502	87	-499.850	807.852
1430.0	0.513	86	-456.200	841.010
1480.0	0.523	85	-443.791	780.443
1530.0	0.530	84	-415.151	628.439
1580.0	0.548	83	-423.751	737.281
1630.0	0.558	82	-382.154	610.288
1680.0	0.572	81	-347.784	847.475
1730.0	0.586	80	-340.536	850.950
1780.0	0.600	79	-382.870	242.448
1830.0	0.623	78	-298.431	862.980
1880.0	0.637	77	-247.784	480.797
1930.0	0.653	76	-185.238	291.151
1980.0	0.668	75	-185.341	271.248
2030.0	0.680	74	-168.988	271.818
2080.0	0.693	73	-178.462	242.974
2130.0	0.707	72	-171.517	231.254
2180.0	0.714	71	-148.139	324.338
2230.0	0.725	70	-140.139	327.137
2280.0	0.736	69	-114.000	306.305
2330.0	0.748	68	-148.310	326.286
2380.0	0.757	67	-131.854	218.440
2430.0	0.768	66	-128.530	300.128
2480.0	0.778	65	-119.205	187.683
2530.0	0.789	64	-117.812	187.191
2580.0	0.798	63	-125.990	190.878
2630.0	0.810	62	-101.777	187.324
2680.0	0.820	61	-94.517	166.781
2730.0	0.831	60	-92.136	157.351
2780.0	0.842	59	-92.375	152.175
2830.0	0.851	58	-93.789	142.818
2880.0	0.862	57	-98.864	139.852
2930.0	0.881	56	-98.328	130.871
2980.0	0.892	55	-98.388	132.152
3030.0	0.901	54	-99.257	127.952
3080.0	0.911	53	-89.835	110.599



COMPANY: BHP PETROLEUM  
 FIELD: WILDCAT  
 WELL: LA BELLA-1  
 COUNTRY: AUSTRALIA