

# VERTICAL SEISMIC PROFILE



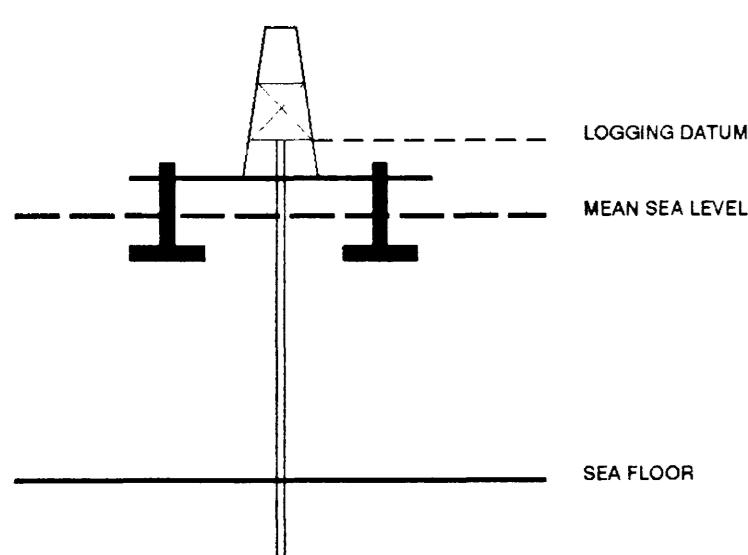
## ZERO OFFSET VSP PLOT 6 WAVESHAPING AND CORRIDOR STACK

Company: BHP PETROLEUM  
 Well: LA BELLA-1  
 Field: WILDCAT  
 Country: AUSTRALIA  
 Reference No: 560875 Interval: 2743.00 to 620.00  
 Date Logged: 11-FEB-1993 Date Processed: 17/2/92  
 Location: 39 00' 14.2" S 142 41' 42.9" E  
 Elevation: KB: 25.30 DF: 25.00 GL: -95.00  
 Permanent Datum: MSL Depth Units: METRES

FIELD RECORDING Engineer: M HELWIG Location: Program Version: 580-325  
 COMPUTATION Analyst: Z.KATELIS Centre: SYJ Baseline: 20.2

### ELEVATION ABOVE MEAN SEA LEVEL

Logging Datum: 25.00  
 Seismic Reference Datum: 0.00



Total Number of Levels: 110  
 Depth Reference: SRD  
 Time Reference: SRD

Run	Date	Tool Type	Bit Size Depth	Casing Size Depth	Top Depth	Bottom Depth
1	30-1-93	AS			1767	120
2	8-2-93	SDT			2375	1785.5

VSP Run	Date	Gun Offset	Hydro Offset	Gun Elevation	Hydro Elevation	Gun Azimuth	Hydro Azimuth
1	30-JAN-1993	47 M	47 M	10 M BELOW MSL	17 M BELOW MSL	50.0	50.0
2	11-FEB-1993	47 M	47 M	10 M BELOW MSL	17 M BELOW MSL	50.0	50.0

REMARKS

All interpretations are opinions based on references from electrical or other measurements and we cannot and do not guarantee the accuracy or consistency of any interpretations, and we shall not, except in the case of gross or willful negligence on our part, be liable or responsible for any loss, costs, damages or expenses incurred or sustained by anyone resulting from any interpretations made by any of our officers, agents or employees. These interpretations are also subject to Clause 4 of our General Terms and Conditions as set out in our current price schedule.

LOAD HERE

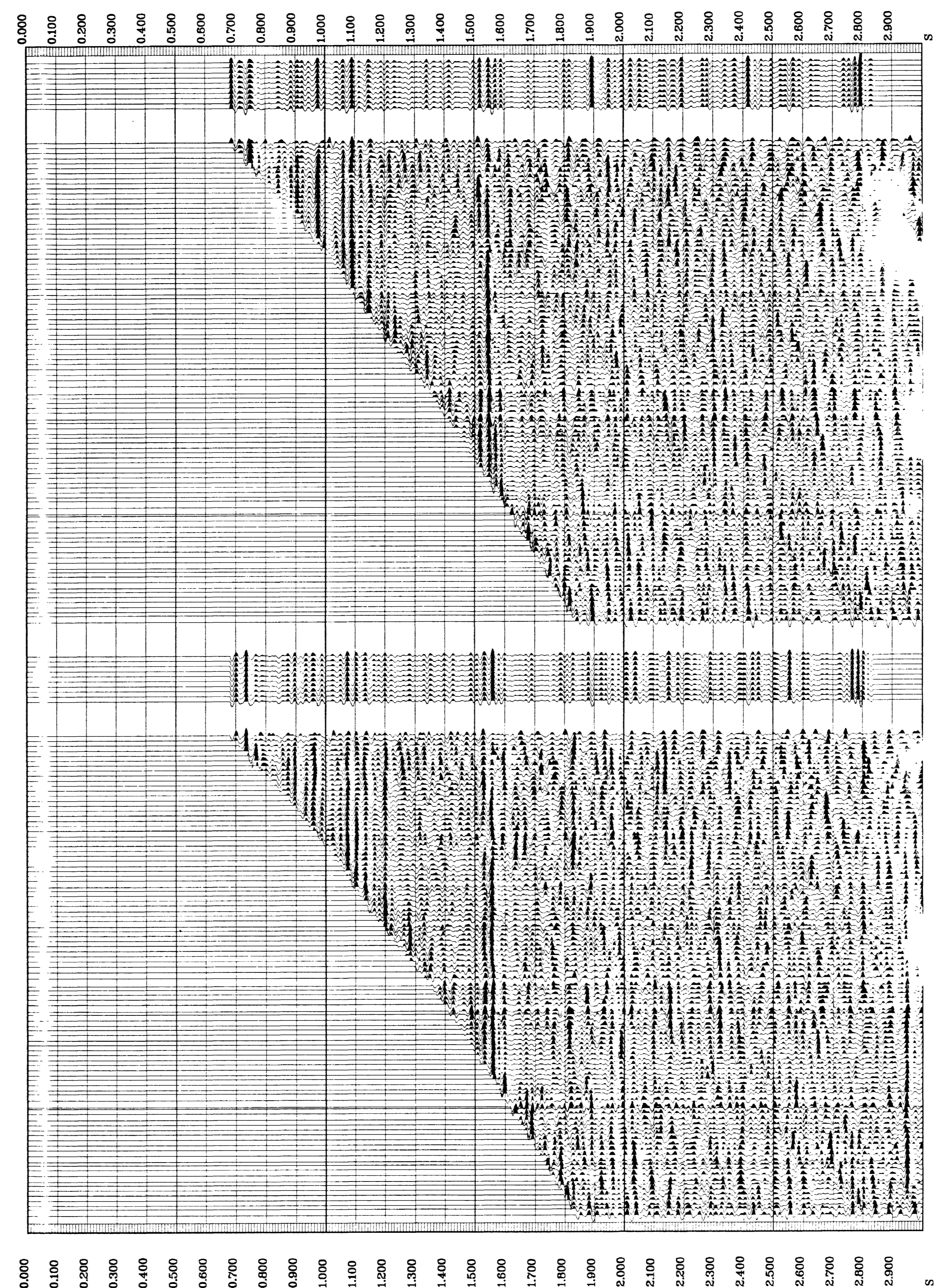
**\* CORRIDOR STACK -AGC\***  
 CORRIDOR WINDOW : 100 MS  
 POLARITY (S.E.G.) : NORMAL

**\*\* WAVESHAPING -AGC\*\***  
 PROCESSING SEQUENCE:  
 MEDIAN COHERENCY STACK APPLIED  
 STATIC CORRECTION TO MSL  
 BAND PASS FILTER : 5-100 HZ  
 NORMALISATION GATE : 100 MS  
 DOWNGOING WAVEFIELD SUBTRACTION  
 WAVESHAPING DECONVOLUTION:  
 10-60 HZ ZERO PHASE WAVELET  
 OPERATOR LENGTH : 0.7 S  
 PREWHITENING : 2 %  
 ENHANCED UPGOING WAVEFIELD  
 POLARITY (S.E.G.) : NORMAL

**\* CORRIDOR STACK -AGC \***  
 CORRIDOR WINDOW : 100 MS  
 POLARITY (S.E.G.) : REVERSE

**\*\* WAVESHAPING- AGC \*\***  
 PROCESSING SEQUENCE:  
 MEDIAN COHERENCY STACK APPLIED  
 STATIC CORRECTION TO MSL  
 BAND PASS FILTER : 5-100 HZ  
 NORMALISATION GATE : 100 MS  
 DOWNGOING WAVEFIELD SUBTRACTION  
 WAVESHAPING DECONVOLUTION:  
 10-60 HZ ZERO PHASE WAVELET  
 OPERATOR LENGTH : 0.7 S  
 PREWHITENING : 2 %  
 ENHANCED UPGOING WAVEFIELD  
 POLARITY (S.E.G.) : REVERSE

RAW DEPTH M	TRUE VERTICAL DEPTH MSL M	TRANSIT TIME S	LEVEL NO
0.0	0.0	0.000	0
0.0	0.0	0.000	0
0.0	0.0	0.000	0
1745.0	1720.0	0.897	61
820.0	795.0	0.348	97
861.0	836.0	0.363	95
902.0	875.0	0.377	93
943.0	913.0	0.392	91
984.0	955.0	0.407	89
1025.0	995.0	0.423	87
1066.0	1035.0	0.438	85
1107.0	1075.0	0.452	83
1148.0	1115.0	0.466	81
1189.0	1155.0	0.479	79
1230.0	1195.0	0.492	77
1271.0	1235.0	0.506	75
1312.0	1275.0	0.518	73
1353.0	1315.0	0.529	71
1394.0	1355.0	0.539	69
1435.0	1395.0	0.552	67
1476.0	1435.0	0.564	65
1517.0	1475.0	0.576	63
1558.0	1515.0	0.588	61
1599.0	1555.0	0.600	59
1640.0	1595.0	0.614	57
1681.0	1635.0	0.628	55
1722.0	1675.0	0.641	53
1763.0	1715.0	0.652	51
1804.0	1755.0	0.665	49
1845.0	1795.0	0.678	47
1886.0	1835.0	0.690	45
1927.0	1875.0	0.702	43
1968.0	1915.0	0.713	41
2009.0	1955.0	0.725	39
2050.0	1995.0	0.737	37
2091.0	2035.0	0.750	35
2132.0	2075.0	0.763	33
2173.0	2115.0	0.774	31
2214.0	2155.0	0.786	29
2255.0	2195.0	0.799	27
2296.0	2235.0	0.810	25
2337.0	2275.0	0.821	23
2378.0	2315.0	0.832	21
2419.0	2355.0	0.843	19
2460.0	2395.0	0.854	17
2501.0	2435.0	0.865	15
2542.0	2475.0	0.877	13
2583.0	2515.0	0.889	11
2624.0	2555.0	0.901	9
2665.0	2595.0	0.912	7
2706.0	2635.0	0.923	5
2747.0	2675.0	0.934	3
2788.0	2715.0	0.945	1



COMPANY BHP PETROLEUM  
 FIELD WILDCAT  
 WELL LA BELLA-1  
 COUNTRY AUSTRALIA

Schlumberger