

VERTICAL SEISMIC PROFILE

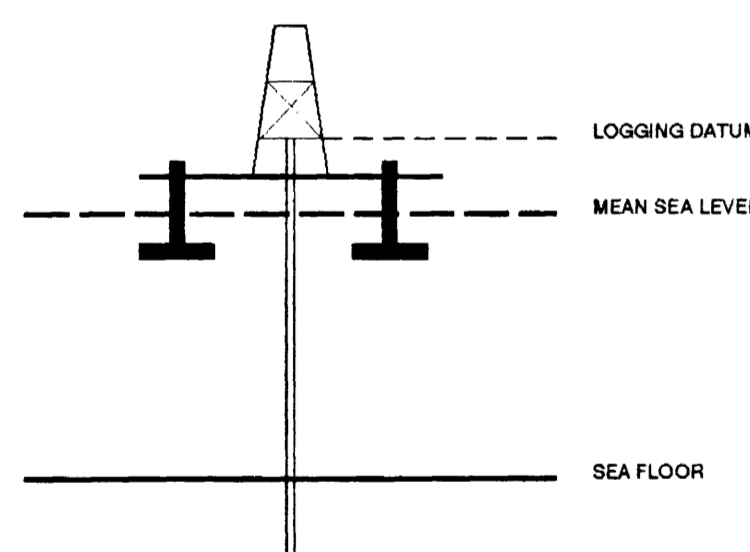


ZERO OFFSET VSP PLOT 5 WAVESHAPING AND CORRIDOR STACK

Company: BHP PETROLEUM
 Well: LA BELLA-1
 Field: WILDCAT
 Country: AUSTRALIA
 Reference No: 560875 Interval: 2743.00 to 620.00
 Date Logged: 11-FEB-1993 Date Processed: 17/2/92
 Location: 39 00' 14.2" S 142 41' 42.9" E
 Elevations: KB: 25.30 DF: 25.00 GL: -95.00
 Permanent Datum: MSL Depth Units: METRES
 FIELD RECORDING Engineer: M.HELWIG Location: Program Version: 580-325
 COMPUTATION Analyst: Z.KATELIS Centre: SYJ Baseline: 20.2

ELEVATION ABOVE MEAN SEA LEVEL

Logging Datum: 25.00
 Seismic Reference Datum: 0.00



Total Number of Levels: 110
 Depth Reference: SRD
 Time Reference: SRD

Run	Date	Tool Type	Bit Size/Depth	Casing Size/Depth	Top Depth	Bottom Depth
1	30-1-93	AS			1787	120
2	8-2-93	SDT			2375	1785.5

VSP Run	Date	Gun Offset	Hydro Offset	Gun Elevation	Hydro Elevation	Gun Azimuth	Hydro Azimuth
1	30-JAN-1993	47 M	47 M	10 M BELOW MSL	17 M BELOW MSL	50.0	50.0
2	11-FEB-1993	47 M	47 M	10 M BELOW MSL	17 M BELOW MSL	50.0	50.0

REMARKS

All interpretations are opinions based on information from electrical or other measurements and we cannot, and do not guarantee the accuracy or correctness of any interpretations, and we shall not, except in the case of gross or willful negligence on our part, be liable or responsible for any loss, costs, damages or expenses incurred or sustained by anyone resulting from any interpretations made by any of our officers, agents or employees. These interpretations are also subject to change if our general terms and conditions as set out in our current Price Schedule.

FOLD HERE

*** CORRIDOR STACK ***
 CORRIDOR WINDOW : 100 MS
 POLARITY (S.E.G.) : NORMAL

**** WAVESHAPING ****

PROCESSING SEQUENCE:
 MEDIAN COHERENCY STACK APPLIED
 STATIC CORRECTION TO MSL
 BAND PASS FILTER : 5-100 HZ
 NORMALISATION GATE : 100 MS

DOWNGOING WAVEFIELD SUBTRACTION
 WAVESHAPING DECONVOLUTION:
 10-60 HZ ZERO PHASE WAVELET
 OPERATOR LENGTH : 0.7 S
 PREWHITENING : 2 %
 ENHANCED UPGOING WAVEFIELD
 POLARITY (S.E.G.) : NORMAL
 T#TIMES REFERENCED TO HYDROPHONE

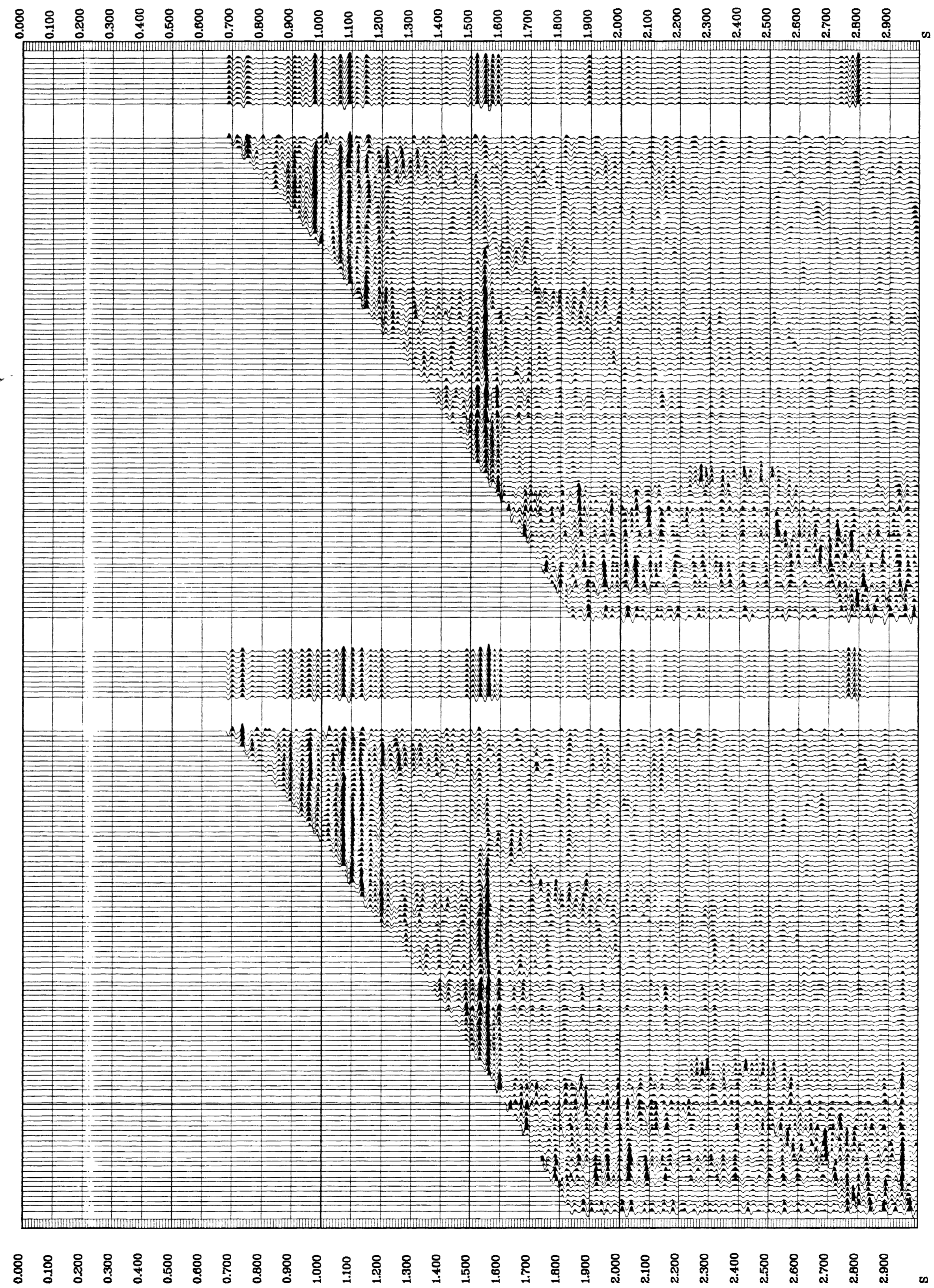
*** CORRIDOR STACK ***
 CORRIDOR WINDOW : 100 MS
 POLARITY (S.E.G.) : REVERSE

**** WAVESHAPING ****

PROCESSING SEQUENCE:
 MEDIAN COHERENCY STACK APPLIED
 STATIC CORRECTION TO MSL
 BAND PASS FILTER : 5-100 HZ
 NORMALISATION GATE : 100 MS

DOWNGOING WAVEFIELD SUBTRACTION
 WAVESHAPING DECONVOLUTION:
 10-60 HZ ZERO PHASE WAVELET
 OPERATOR LENGTH : 0.7 S
 PREWHITENING : 2 %
 ENHANCED UPGOING WAVEFIELD
 POLARITY (S.E.G.) : REVERSE
 T#TIMES REFERENCED TO HYDROPHONE

RAW DEPTH M	TRUE VERTICAL DEPTH MSL M	TRANSIT TIME S	LEVEL NO
0.0	0.0	0.000	0
0.0	0.0	0.000	0
0.0	0.0	0.000	0
0.0	0.0	0.000	0
1745.0	1726.0	0.687	51
820.0	795.0	0.348	97
861.0	836.0	0.363	95
900.0	875.0	0.377	93
940.0	915.0	0.392	91
980.0	955.0	0.407	89
1020.0	995.0	0.423	87
1060.0	1035.0	0.438	85
1100.0	1075.0	0.452	83
1140.0	1115.0	0.466	81
1180.0	1155.0	0.479	79
1220.0	1195.0	0.492	77
1260.0	1235.0	0.506	75
1300.0	1275.0	0.518	73
1340.0	1315.0	0.529	71
1380.0	1355.0	0.539	69
1420.0	1395.0	0.552	67
1460.0	1435.0	0.564	65
1500.0	1475.0	0.576	63
1540.0	1515.0	0.588	61
1580.0	1555.0	0.601	59
1620.0	1595.0	0.614	57
1660.0	1635.0	0.627	55
1700.0	1675.0	0.641	53
1740.0	1715.0	0.657	51
1780.0	1755.0	0.673	49
1820.0	1795.0	0.687	47
1860.0	1835.0	0.697	45
1900.0	1875.0	0.708	43
1940.0	1915.0	0.721	41
1980.0	1955.0	0.731	39
2020.0	1995.0	0.741	37
2060.0	2035.0	0.752	35
2100.0	2075.0	0.763	33
2140.0	2115.0	0.774	31
2180.0	2155.0	0.784	29
2220.0	2195.0	0.794	27
2260.0	2235.0	0.801	25
2300.0	2275.0	0.808	23
2340.0	2315.0	0.815	21
2380.0	2355.0	0.827	19
2420.0	2395.0	0.836	17
2460.0	2435.0	0.844	15
2500.0	2475.0	0.852	13
2540.0	2515.0	0.857	11
2580.0	2555.0	0.864	9
2620.0	2595.0	0.869	7
2660.0	2635.0	0.873	5
2700.0	2675.0	0.876	3
2740.0	2715.0	0.878	1



COMPANY BHP PETROLEUM
 FIELD WILDCAT
 WELL LA BELLA-1
 COUNTRY AUSTRALIA

