

Schlumberger

MELBOURNE LOG INTERPRETATION CENTRE

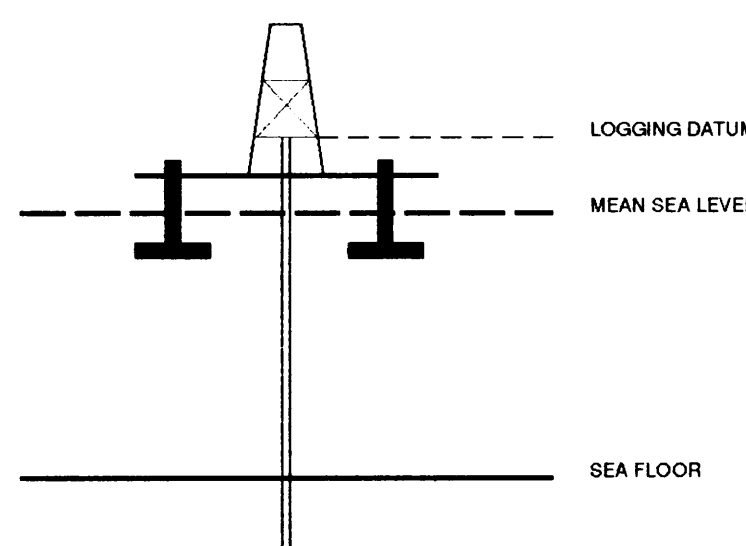


VERTICAL SEISMIC PROFILE

ZERO OFFSET VSP PLOT 4 WAVESHAPING DECONVOLUTION

Company: BHP PETROLEUM
 Well: ERIC THE RED-1
 Field: WILDCAT
 Country: AUSTRALIA
 Reference No: 560880 Interval: 1848.00 to 373.00
 Date Logged: 27 FEB 1992 Date Processed: 5/3/92
 Location: 39 00' 45.44" S 143 10' 51.45" E
 Elevations: KB: 25.30 DF: 25.00 GL: -75.00
 Permanent Datum: MSL Depth Units: METRES
 FIELD RECORDING: Engineer: S NAKANISHI Location: Program Version: 580-325
 COMPUTATION: Analyst: Z.KATELIS Centre: SYJ Baseline: 20.2

ELEVATION ABOVE MEAN SEA LEVEL
 Logging Datum: 25.00
 Seismic Reference Datum: 0.00



Total Number of Levels		80					
Depth Reference		SRD					
Time Reference		SRD					
Run	Date	Tool Type	Bit Size/ Depth	Casing Size/ Depth	Top Depth	Bottom Depth	
VSP	Date	Gun Offset	Hydro Offset	Gun Elevation	Hydro Elevation	Gun Azimuth	Hydro Azimuth
1	27-FEB-1992	47 M	47 M	7 BELOW MSL	14 M BELOW MSL	50.0	50.0

REMARKS

The well name, location and borehole reference data were furnished by the customer.

Please refer to our General Terms and Conditions as set out in our current Price Schedule.

FOLD HERE

CLIENT = BHP PETROLEUM
 FIELD = WILDCAT
 WELL = ERIC THE RED-1

** WAVESHAPING **

DOWNGOING WAVEFIELD
 PROCESSING SEQUENCE:
 MEDIAN COHERENCY STACK APPLIED
 STATIC CORR-N TO MSL
 BAND PASS FILTER : 5-100 HZ
 NORMALISATION GATE : 100 MS

7 LEVEL MEDIAN ESTIMATE OF
 DOWNGOING WAVEFIELD
 10-60 HZ WAVESHAPING DECONVOLUTION

SCALE : 10 CM/SEC
 POLARITY (S.E.G.) : NORMAL

** WAVESHAPING **

RESIDUAL WAVEFIELD
 PROCESSING SEQUENCE:
 MEDIAN COHERENCY STACK APPLIED
 STATIC CORR-N TO MSL
 BAND PASS FILTER : 5-100 HZ
 NORMALISATION GATE : 100 MS

DOWNGOING WAVEFIELD SUBTRACTION
 10-60 HZ WAVESHAPING DECONVOLUTION

SCALE : 10 CM/SEC
 POLARITY (S.E.G.) : NORMAL

** WAVESHAPING **

RESIDUAL WAVEFIELD
 PROCESSING SEQUENCE:
 MEDIAN COHERENCY STACK APPLIED
 STATIC CORR-N TO MSL
 BAND PASS FILTER : 5-100 HZ
 NORMALISATION GATE : 100 MS

DOWNGOING WAVEFIELD SUBTRACTION
 10-60 HZ WAVESHAPING DECONVOLUTION

SCALE : 10 CM/SEC
 POLARITY (S.E.G.) : NORMAL

** WAVESHAPING **

ENHANCED UPGOING WAVEFIELD
 PROCESSING SEQUENCE:
 MEDIAN COHERENCY STACK APPLIED
 STATIC CORR-N TO MSL
 BAND PASS FILTER : 5-100 HZ
 NORMALISATION GATE : 100 MS

DOWNGOING WAVEFIELD SUBTRACTION
 10-60 HZ WAVESHAPING DECONVOLUTION
 5 LEVEL ENHANCEMENT ON UPGOING

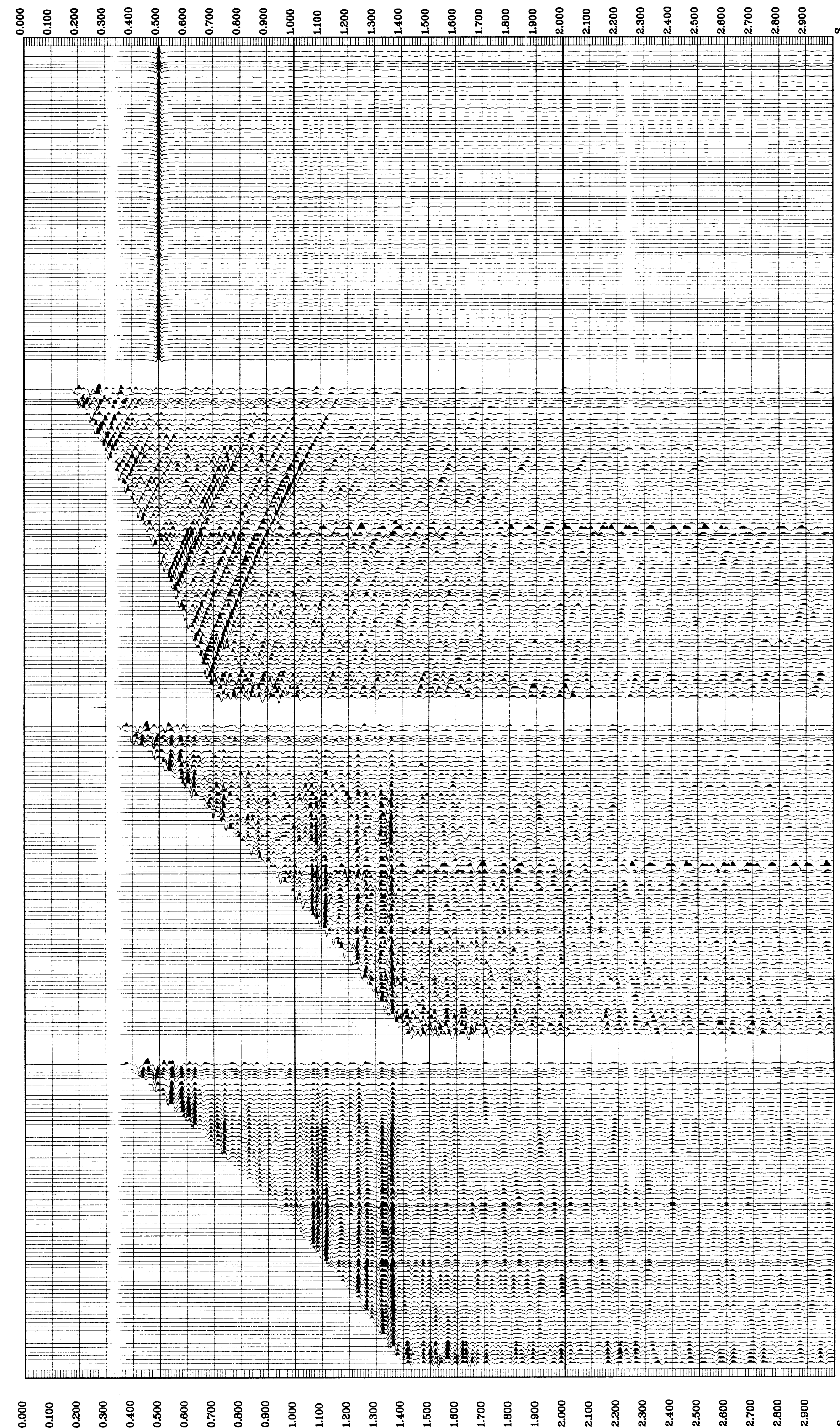
SCALE : 10 CM/SEC
 POLARITY (S.E.G.) : NORMAL

347.0	0.184	74
385.0	0.201	72
415.0	0.215	70
447.0	0.230	69
497.0	0.250	67
548.0	0.267	65
598.0	0.283	63
638.0	0.299	61
668.0	0.316	59
708.0	0.332	57
748.0	0.348	55
788.0	0.364	53
828.0	0.379	51
868.0	0.395	49
908.0	0.411	47
948.0	0.426	45
988.0	0.440	43
1040.0	0.455	40
1080.0	0.469	38
1120.0	0.483	36
1163.0	0.496	34
1200.0	0.508	32
1240.0	0.520	30
1280.0	0.532	28
1318.0	0.544	26
1355.0	0.557	24
1395.0	0.568	22
1440.0	0.577	20
1480.0	0.587	19
1524.0	0.597	17
1568.0	0.607	15
1608.0	0.617	13
1650.0	0.628	11
1688.0	0.638	9
1728.0	0.648	7
1743.0	0.652	5
1780.0	0.659	3
1820.0	0.667	1

347.0	0.184	74
385.0	0.201	72
415.0	0.215	70
447.0	0.230	69
497.0	0.250	67
548.0	0.267	65
598.0	0.283	63
638.0	0.299	61
668.0	0.316	59
708.0	0.332	57
748.0	0.348	55
788.0	0.364	53
828.0	0.379	51
868.0	0.395	49
908.0	0.411	47
948.0	0.426	45
988.0	0.440	43
1040.0	0.455	40
1080.0	0.469	38
1120.0	0.483	36
1163.0	0.496	34
1200.0	0.508	32
1240.0	0.520	30
1280.0	0.532	28
1318.0	0.544	26
1355.0	0.557	24
1400.0	0.568	22
1440.0	0.577	20
1480.0	0.587	19
1524.0	0.597	17
1568.0	0.607	15
1608.0	0.617	13
1650.0	0.628	11
1688.0	0.638	9
1728.0	0.648	7
1743.0	0.652	5
1780.0	0.659	3
1820.0	0.667	1

347.0	0.184	74
385.0	0.201	72
415.0	0.215	70
447.0	0.230	69
497.0	0.250	67
548.0	0.267	65
598.0	0.283	63
638.0	0.299	61
668.0	0.316	59
708.0	0.332	57
748.0	0.348	55
788.0	0.364	53
828.0	0.379	51
868.0	0.395	49
908.0	0.411	47
948.0	0.426	45
988.0	0.440	43
1040.0	0.455	40
1080.0	0.469	38
1120.0	0.483	36
1163.0	0.496	34
1200.0	0.508	32
1240.0	0.520	30
1280.0	0.532	28
1318.0	0.544	26
1355.0	0.557	24
1400.0	0.568	22
1440.0	0.577	20
1480.0	0.587	19
1524.0	0.597	17
1568.0	0.607	15
1608.0	0.617	13
1650.0	0.628	11
1688.0	0.638	9
1728.0	0.648	7
1743.0	0.652	5
1780.0	0.659	3
1820.0	0.667	1

347.0	0.184	74
385.0	0.201	72
415.0	0.215	70
447.0	0.230	69
497.0	0.250	67
548.0	0.267	65
598.0	0.283	63
638.0	0.299	61
668.0	0.316	59
708.0	0.332	57
748.0	0.348	55
788.0	0.364	53
828.0	0.379	51
868.0	0.395	49
908.0	0.411	47
948.0	0.426	45
988.0	0.440	43
1040.0	0.455	40
1080.0	0.469	38
1120.0	0.483	36
1163.0	0.496	34
1200.0	0.508	32
1240.0	0.520	30
1280.0	0.532	28
1318.0	0.544	26
1355.0	0.557	24
1400.0	0.568	22
1440.0	0.577	20
1480.0	0.587	19
1524.0	0.597	17
1568.0	0.607	15
1608.0	0.617	13
1650.0	0.628	11
1688.0	0.638	9
1728.0	0.648	7
1743.0	0.652	5
1780.0	0.659	3
1820.0	0.667	1



COMPANY BHP PETROLEUM
 FIELD WILDCAT
 WELL ERIC THE RED-1
 COUNTRY AUSTRALIA

